



Message Specification

## **A4D Vehicle Firm Booking**

Based on:

**IFTMBF**

Firm booking message

**UN D.98B S3**

Version: 1.3  
Issue date: 2015-03-02  
Author: Volvo Information Technology AB

---

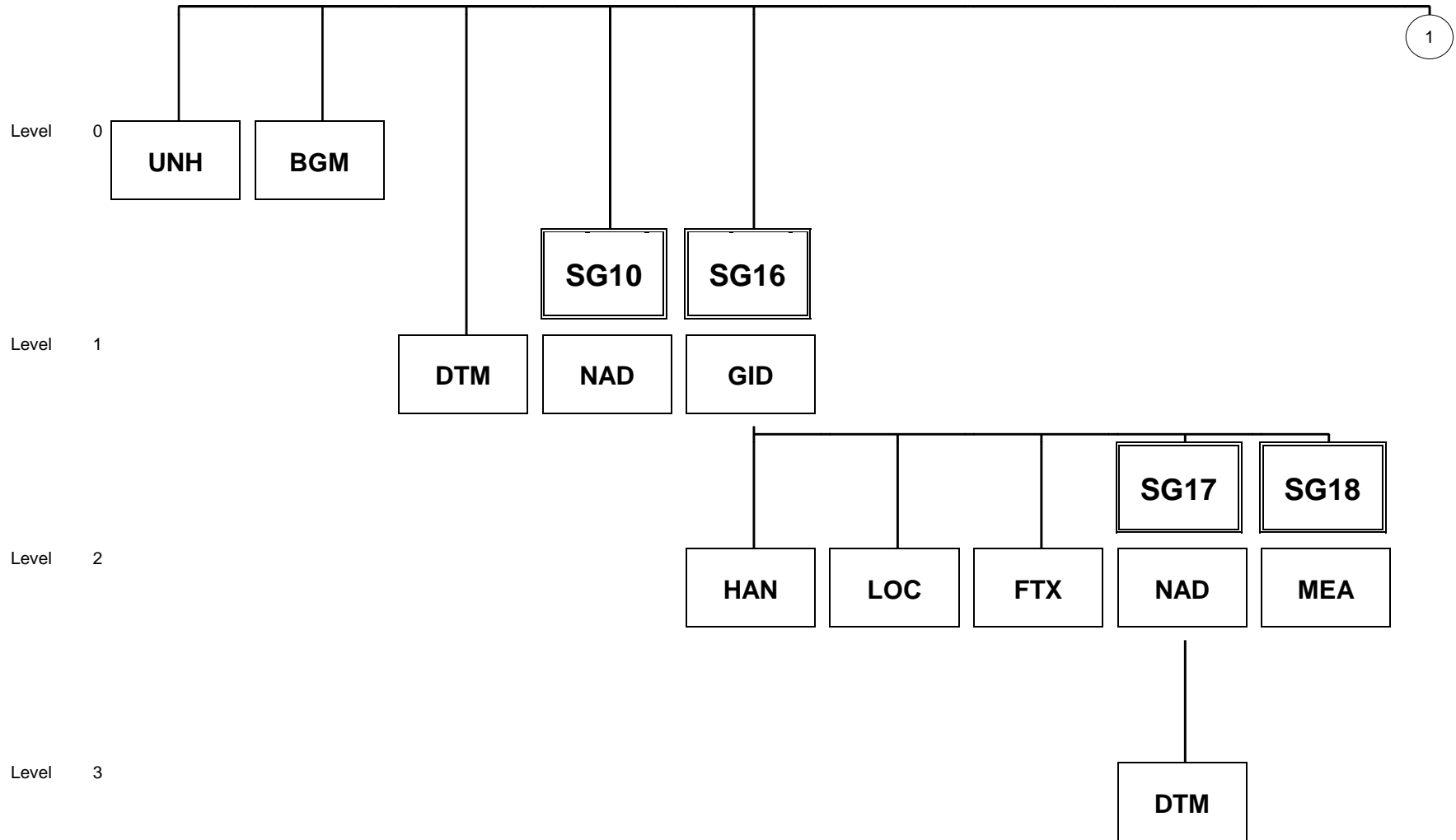
### Message Structure

Counter	No	Tag	St	MaxOcc	Level	Content
0010	1	<b>UNH</b>	M	1	0	Message header
0020	2	<b>BGM</b>	M	1	0	Beginning of message
0050	3	<b>DTM</b>	R	1	1	Date/time/period
0450		<b>SG10</b>	R	2	1	NAD
0460	4	<b>NAD</b>	M	1	1	Name and address
0690		<b>SG16</b>	R	999	1	GID-HAN-LOC-FTX-SG17-SG18
0700	5	<b>GID</b>	M	1	1	Goods item details
0710	6	<b>HAN</b>	R	1	2	Handling instructions
0750	7	<b>LOC</b>	R	3	2	Place/location identification
0780	8	<b>FTX</b>	D	1	2	Free text
0800		<b>SG17</b>	R	3	2	NAD-DTM
0810	9	<b>NAD</b>	M	1	2	Name and address
0820	10	<b>DTM</b>	R	4	3	Date/time/period
0840		<b>SG18</b>	D	99	2	MEA
0850	11	<b>MEA</b>	M	1	2	Measurements
1420	12	<b>UNT</b>	M	1	0	Message trailer

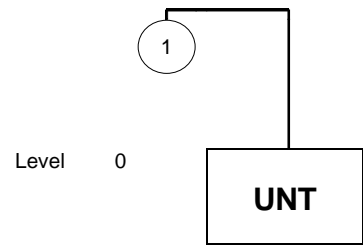
Counter = Counter of segment/group within the standard  
 No = Consecutive segment number  
 MaxOcc = Maximum occurrence of the segment/group

St = Status  
 EDIFACT: M=Mandatory, C=Conditional  
 User specific: R=Required, O=Optional, D=Dependent,  
 A=Advised, N=Not used

### Branching Diagram of Used Segments/Groups



A4D Vehicle Firm Booking



# A4D VEHICLE FIRM BOOKING

## Segment details

**Segment:** UNH
 Seq. No.: 1 Level: 0 **Message header**  
 Status: M Max. Occ.: 1  
 Counter: 0010

**Name:** Message header

**Description of segment:**

A service segment starting and uniquely identifying a message. The message type code for the Firm Booking message is IFTMBF.

UN/EDIFACT			Implementation	
	Name	St Format	St Format	Use / Remarks
UNH				
0062	Message reference number	M an..14	M an..14	
S009	Message identifier	M	M	
0065	Message type identifier	M an..6	M an..6	<b>IFTMBF = Firm booking message</b>
0052	Message version number	M an..3	M an..3	<b>D = Draft version/UN/EDIFACT Directory</b>
0054	Message release number	M an..3	M an..3	<b>98B = Release 1998 - B</b>
0051	Controlling agency	M an..2	M an..2	<b>UN = UN/ECE/TRADE/WP.4</b>
0057	Association assigned code	C an..6	M an..6	<b>VT0070 = A4D Firm Booking</b>

**Remark:**

**Example:**

UNH+0123+IFTMBF:D:98B:UN:VT0070'

# A4D VEHICLE FIRM BOOKING

## Segment details

**Segment:** BGM
 Seq. No.: 2 Level: 0 **Beginning of message**  
 Status: M Max. Occ.: 1  
 Counter: 0020

**Name:** Beginning of message

**Description of segment:**

A segment to indicate the beginning of a message and to transmit identifying number and type of the message.

UN/EDIFACT		Implementation		
	Name	St Format	St Format	Use / Remarks
BGM				
C002	Document/message name	C	R	
1001	Document/message name, coded	C an..3	R an..3	<b>335 = Booking request</b>
C106	Document/message identification	C	R	
1004	Document/message number	C an..35	R an..35	
1225	Message function, coded	C an..3	C an..3	<b>2 = Addition</b> <i>Code 2 is used if there are more than 999 vehicles in the same booking.</i> <b>4 = Change</b> <i>Code 4 is used when earlier booked vehicle, confirmable, is put on "HOLD" or "RELEASE HOLD". Also used when earlier booked vehicle has got any change of date/time for "available", delivery or "effort" or when arriving to "pickup location".</i> <b>9 = Original</b> <i>Code '9' is assumed if not used.</i>

**Remark:**

**Example:**

BGM+335+0123456+9'

# A4D VEHICLE FIRM BOOKING

## Segment details

**Segment:** DTM
 Seq. No.: 3 Level: 1 Date/time/period  
 Status: R Max. Occ.: 1  
 Counter: 0050

**Name:** Date/time/period

**Description of segment:**

A segment to indicate a date and time applying to the whole message, e.g., date and time of document issue.

UN/EDIFACT		Implementation		
	Name	St Format	St Format	Use / Remarks
DTM				
C507	Date/time/period	M	M	
2005	Date/time/period qualifier	M an..3	M an..3	<b>182</b> = Issue date
2380	Date/time/period	C an..35	M an..35	
2379	Date/time/period format qualifier	C an..3	M an..3	<b>204</b> = CCYYMMDDHHMMSS

**Remark:**

**Example:**

DTM+182:20140703:204'

# A4D VEHICLE FIRM BOOKING

## Segment details

**Group:** SG10    Status: R    Max. Occ.: 2    NAD

**Segment:** NAD    Seq. No.: 4    Level: 1    **Name and address**  
 Status: M    Max. Occ.: 1  
 Counter: 0460

**Name:**                      **Name and address**

**Description of segment:**

A segment to identify the party's name, address, and function.

UN/EDIFACT		Implementation		
	Name	St Format	St Format	Use / Remarks
NAD				
3035	Party qualifier	M an..3	M an..3	<b>CA</b> = <b>Carrier</b> <b>FW</b> = <b>Freight forwarder</b>
C082	Party identification details	C	R	
3039	Party identification	M an..35	M an..35	Parma id provided by Volvo.
1131	Code list qualifier	C an..3	N	not used
3055	Code list responsible agency, coded	C an..3	R an..3	<b>RA1</b> = <b>Assigned by freight forwarder</b>
C058	Name and address	C	R	
3124	Name and address line	M an..35	M an..35	

**Remark:**

**Example:**

NAD+FW+01705::RA1+VOLVO GROUP LOGISTICS SERVICES'



# A4D VEHICLE FIRM BOOKING

## Segment details

**Group:** SG16    Status: R    Max. Occ.: 999    GID-HAN-LOC-FTX-SG17-SG18

**Segment:** GID    Seq. No.: 5    Level: 1    **Goods item details**  
 Status: M    Max. Occ.: 1  
 Counter: 0700

**Name:**            **Goods item details**

**Description of segment:**

A segment to identify a goods item for which transport is undertaken. A goods item can be identified by up to three levels of packaging.

UN/EDIFACT			Implementation	
	Name	St Format	St Format	Use / Remarks
GID				
1496	Goods item number	C n..5	N	not used
C213	Number and type of packages	C	D	
7224	Number of packages	C n..8	N	not used
7065	Type of packages identification	C an..17	R an..17	Vehicle Identification Number.
1131	Code list qualifier	C an..3	R an..3	<b>AKG</b> = Vehicle identification number
3055	Code list responsible agency, coded	C an..3	R an..3	<b>90</b> = Assigned by manufacturer
C213	Number and type of packages	C	C	
7224	Number of packages	C n..8	N	not used
7065	Type of packages identification	C an..17	R an..17	Chassis Number.
1131	Code list qualifier	C an..3	R an..3	<b>CHA</b> = Chassis number
3055	Code list responsible agency, coded	C an..3	R an..3	<b>90</b> = Assigned by manufacturer
C213	Number and type of packages	C	C	
7224	Number of packages	C n..8	N	not used
7065	Type of packages identification	C an..17	R an..17	Distribution Order Number.
1131	Code list qualifier	C an..3	R an..3	<b>IL</b> = Internal order number
3055	Code list responsible agency, coded	C an..3	R an..3	<b>RA1</b> = Assigned by freight forwarder
C213	Number and type of packages	C	C	
7224	Number of packages	C n..8	N	not used
7065	Type of packages identification	C an..17	R an..17	Business Area Code.
1131	Code list qualifier	C an..3	R an..3	<b>42</b> = Business function
3055	Code list responsible agency, coded	C an..3	R an..3	<b>RA1</b> = Assigned by freight forwarder
C213	Number and type of packages	C	C	
7224	Number of packages	C n..8	N	not used
7065	Type of packages identification	C an..17	R an..17	Main Type Code
1131	Code list qualifier	C an..3	R an..3	<b>57</b> = Product code
3055	Code list responsible agency, coded	C an..3	R an..3	<b>RA1</b> = Assigned by freight forwarder
7064	Type of packages	C an..35	R an..35	Used to describe Main Type Code.

**Remark:**

# A4D VEHICLE FIRM BOOKING

## Segment details

**Example:**

GID++:VIN:AKG:90+:CHASSINR:CHA:90+:DON:IL:RA1+:BAC:42:RA1+:MTC:57:RA1:DESC\_MTC'

# A4D VEHICLE FIRM BOOKING

## Segment details

**Group:** SG16    Status: R    Max. Occ.: 999    GID-HAN-LOC-FTX-SG17-SG18

**Segment:** HAN    Seq. No.: 6    Level: 2    **Handling instructions**  
 Status: R    Max. Occ.: 1  
 Counter: 0710

**Name:**            **Handling instructions**

**Description of segment:**

A segment to specify handling instructions relating to the goods item.

UN/EDIFACT		Implementation		
	Name	St Format	St Format	Use / Remarks
HAN				
C524	Handling instructions	C	R	
4079	Handling instructions, coded	C an..3	R an..3	<b>1</b> = <b>Express</b> <b>5</b> = <b>Distribution "HOLD"</b> <i>Used in combination of BGM.1225=4</i> <b>6</b> = <b>High</b> <b>7</b> = <b>Normal</b>
1131	Code list qualifier	C an..3	R an..3	<b>63</b> = <b>Handling action</b>
3055	Code list responsible agency, coded	C an..3	R an..3	<b>RA1</b> = <b>Assigned by freight forwarder.</b>

**Remark:**

For release of "Distribution HOLD", qualifier 1,6 or 7 will be used in element 4079.

**Example:**

HAN+1:63:RA1'

# A4D VEHICLE FIRM BOOKING

## Segment details

**Group:** SG16    Status: R    Max. Occ.: 999    GID-HAN-LOC-FTX-SG17-SG18

**Segment:** LOC    Seq. No.: 7    Level: 2    **Place/location identification**  
 Status: R    Max. Occ.: 3  
 Counter: 0750

**Name:**                    **Place/location identification**

**Description of segment:**

A segment to specify a country associated with a goods item, such as country of origin, or country of destination.

UN/EDIFACT		Implementation		
	Name	St Format	St Format	Use / Remarks
LOC				
3227	Place/location qualifier	M an..3	M an..3	<b>5</b> = <b>Place of departure</b> <b>8</b> = <b>Place of destination</b> <b>PL1</b> = <b>Next place of destination</b>
C517	Location identification	C	R	
3225	Place/location identification	C an..25	R an..25	Based on UN/LOCODE
1131	Code list qualifier	C an..3	R an..3	<b>156</b> = <b>Location of goods</b>
3055	Code list responsible agency, coded	C an..3	R an..3	<b>RA1</b> = <b>Assigned by freight forwarder</b>
3224	Place/location	C an..70	D an..70	Parking space/lane if available. Used for place of departure (qualifier "5" in 3227).

**Remark:**

**Example:**

LOC+5+PLGDY0001:156:RA1'

# A4D VEHICLE FIRM BOOKING

## Segment details

**Group:** SG16    Status: R    Max. Occ.: 999    GID-HAN-LOC-FTX-SG17-SG18

**Segment:** FTX    Seq. No.: 8    Level: 2    **Free text**  
 Status: D    Max. Occ.: 1  
 Counter: 0780

**Name:**            Free text

**Description of segment:**

Used if other service information is needed.

UN/EDIFACT		Implementation		
	Name	St Format	St Format	Use / Remarks
FTX				
4451	Text subject qualifier	M an..3	M an..3	<b>OSI</b> = <b>Other service information</b>
4453	Text function, coded	C an..3	N	not used
C107	Text reference	C	N	not used
4441	Free text identification	M an..17	N	not used
C108	Text literal	C	R	
4440	Free text	M an..70	M an..70	

**Remark:**

**Example:**

FTX+OSI+++ADDITIONAL INFORMATION IF AVAILABLE'



# A4D VEHICLE FIRM BOOKING

## Segment details

**Group:** SG16    Status: R    Max. Occ.: 999    GID-HAN-LOC-FTX-SG17-SG18

**Group:** SG17    Status: R    Max. Occ.: 3    NAD-DTM

**Segment:** DTM    Seq. No.: 10    Level: 3    **Date/time/period**  
 Status: R    Max. Occ.: 4  
 Counter: 0820

**Name:**            **Date/time/period**

**Description of segment:**

A segment to indicate date and time relating to the place of collection or delivery.

UN/EDIFACT			Implementation	
	Name	St Format	St Format	Use / Remarks
DTM				
C507	Date/time/period	M	M	
2005	Date/time/period qualifier	M an..3	M an..3	<b>2</b> = Delivery date/time, requested <b>DT1</b> = Available date/time, actual (Confirmable) <b>DT2</b> = Available date/time, planned (Not Confirmable) <b>DT3</b> = Available date/time, planned (Confirmable) <b>DT4</b> = Effort date/time, requested
2380	Date/time/period	C an..35	R an..35	
2379	Date/time/period format qualifier	C an..3	R an..3	<b>203</b> = CCYMMDDHHMM

**Remark:**

Qualifier 2 and DT4 is used for NAD.3035=CN and DT1, DT2 and DT3 for NAD.3035=CZ.

**Example:**

DTM+2:201407122359:203'

# A4D VEHICLE FIRM BOOKING

## Segment details

**Group:** SG16 Status: R Max. Occ.: 999 GID-HAN-LOC-FTX-SG17-SG18

**Group:** SG18 Status: D Max. Occ.: 99 MEA

**Segment:** MEA Seq. No.: 11 Level: 2 **Measurements**  
 Status: M Max. Occ.: 1  
 Counter: 0850

**Name:** Measurements

**Description of segment:**

This segment also include vehicle specification.

UN/EDIFACT		Implementation		
	Name	St Format	St Format	Use / Remarks
MEA				
6311	Measurement purpose qualifier	M an..3	M an..3	<b>XXX</b> = Where "XXX" represent different qualifiers given in a separate document from VOLVO. Qualifiers according to special agreement with VOLVO.
C502	Measurement details	C	D	
6313	Property measured, coded	C an..3	N	not used
6321	Measurement significance, coded	C an..3	N	not used
6155	Measurement attribute identification	C an..17	N	not used
6154	Measurement attribute	C an..70	D an..70	Attribute description.
C174	Value/range	C	R	
6411	Measure unit qualifier	M an..3	M an..3	<b>CDE</b> = Code or other value <b>CMT</b> = centimetre <b>KGM</b> = kilogram
6314	Measurement value	C an..18	R an..18	

**Remark:**

**Example:**

MEA+AAI++CDE:4783 '  
 MEA+MAT++CDE:FH42T '  
 MEA+FUT++CDE:DIESEL '



# A4D VEHICLE FIRM BOOKING

## Segment details

**Segment:**      UNT     
 Seq. No.:      12    Level:      0                      **Message trailer**  
 Status:        M    Max. Occ.:    1  
 Counter:      1420

**Name:**            **Message trailer**

**Description of segment:**

A service segment ending a message, giving the total number of segments in the message and the control reference number of the message.

UN/EDIFACT		Implementation		
	Name	St Format	St Format	Use / Remarks
UNT				
0074	Number of segments in the message	M n..6	M n..6	
0062	Message reference number	M an..14	M an..14	

**Remark:**

**Example:**

UNT+12+0123 '