

INVOIC Volvo Invoice Message of Transport Services

Introduction:

A message claiming payment for goods or services supplied under conditions agreed between the seller and the buyer.

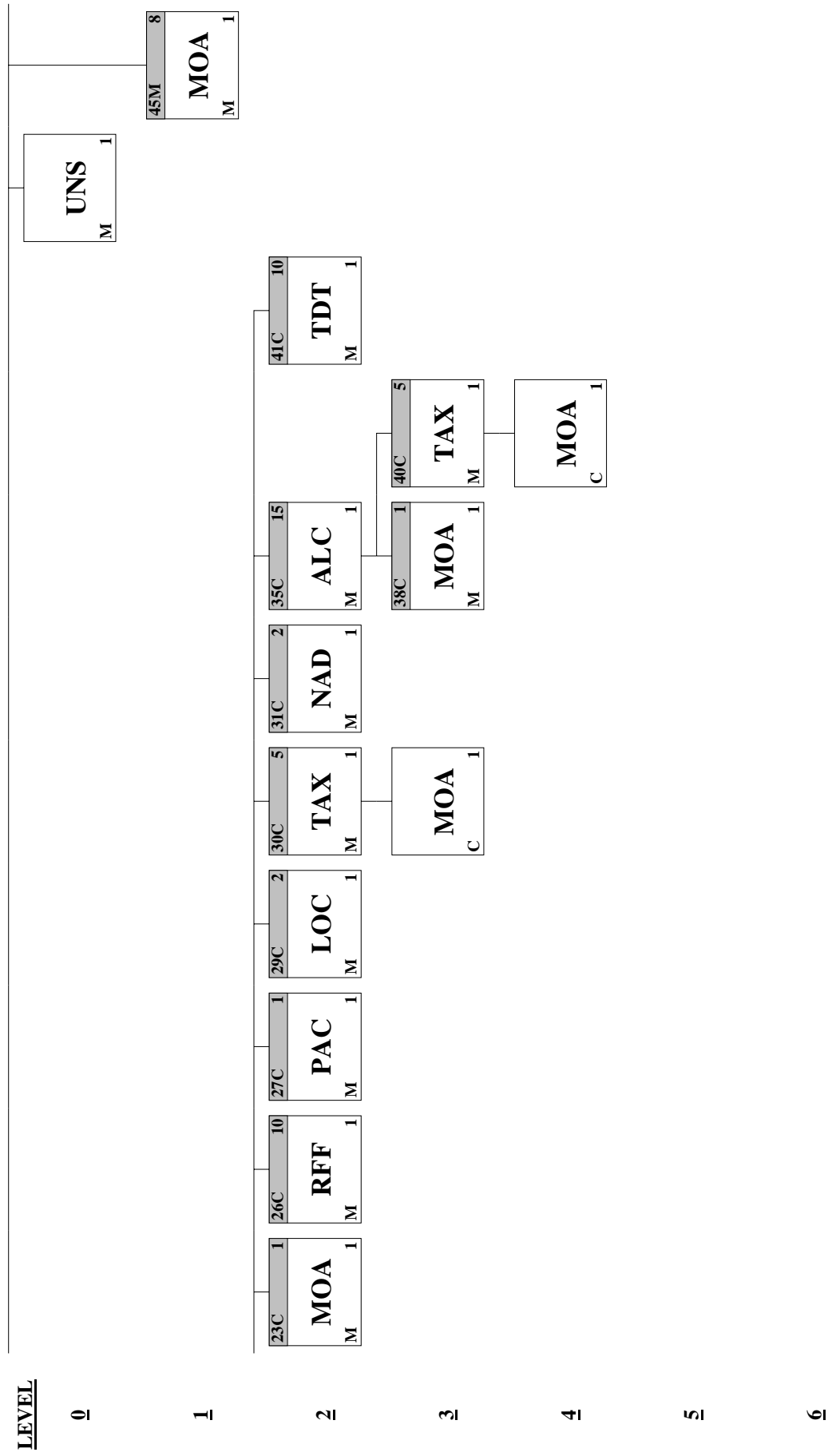
The United Nations Standard Invoice Message, with correct data qualification, serves also as the specification for Debit Note and Credit Note messages. Throughout this document, the reference to 'Invoice' may be interpreted as conveying the wider meaning of 'Invoice/Credit Note/Debit Note'.

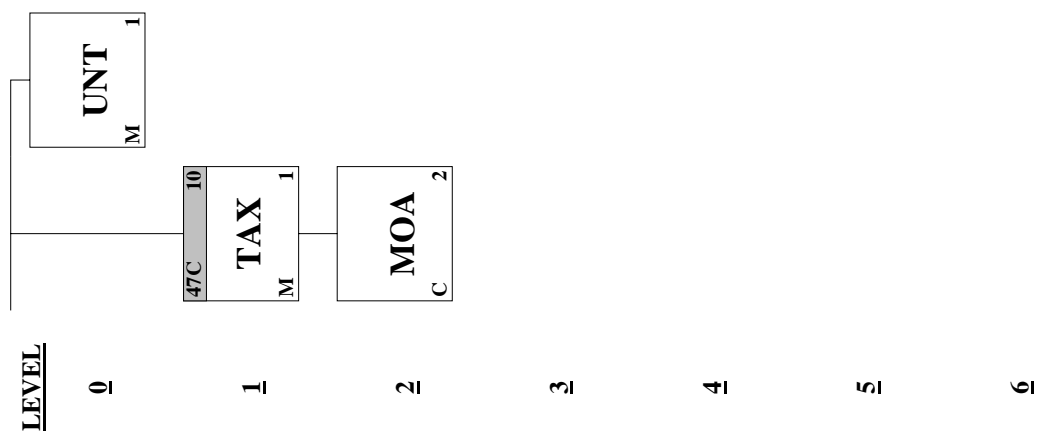
Notes:

Document Name: VT0010
 Document Date: 2004-06-07
 Version: 2.0
 Directory: D93A (according to EDIFACT Transport Pharos 1.0)

Page No.	Pos. No.	Seg. ID	Name	Base Status	User Status	Max.Use	Group Repeat
6	005	UNH	Message Header	M	M	1	
7	010	BGM	Beginning of Message	M	M	1	
8	015	DTM	Date/Time/Period	M	M	35	
Segment Group 2: NAD-SG3-SG5				C	R		3
10	050	NAD	Name and Address	M	M	1	
Segment Group 3: RFF				O	R		4
13	065	RFF	Reference	M	M	1	
Segment Group 5: CTA				C	D		1
15	085	CTA	Contact Information	M	M	1	
Segment Group 7: CUX				C	R		5
17	110	CUX	Currencies	M	M	1	
Segment Group 8: PAT-DTM				C	R		5
19	120	PAT	Payment Terms Basis	M	M	1	
20	125	DTM	Date/Time/Period	C	R	1	
Segment Group 22: LIN-MEA-QTY-DTM-FTX-SG23-SG26-SG27-SG29-SG30-SG31-SG35-SG41				C	R		200000
22	285	LIN	Line Item	M	M	1	
23	300	MEA	Measurements	C	D	3	
24	305	QTY	Quantity	C	D	3	
25	320	DTM	Date/Time/Period	C	R	8	
26	340	FTX	Free Text	C	D	5	
Segment Group 23: MOA				C	R		1
28	345	MOA	Monetary Amount	M	M	1	
Segment Group 26: RFF				C	R		10
30	395	RFF	Reference	M	M	1	
Segment Group 27: PAC				C	R		1
32	405	PAC	Package	M	M	1	
Segment Group 29: LOC				C	R		2
34	435	LOC	Place/Location Identification	M	M	1	
Segment Group 30: TAX-MOA				C	R		5
36	450	TAX	Duty/Tax/Fee Details	M	M	1	
37	455	MOA	Monetary Amount	C	D	1	
Segment Group 31: NAD				C	D		2

39	465	NAD	Name and Address	M	M	1
			Segment Group 35: ALC-SG38-SG40	C	D	15
42	505	ALC	Allowance or Charge	M	M	1
			Segment Group 38: MOA	C	R	1
44	535	MOA	Monetary Amount	M	M	1
			Segment Group 40: TAX-MOA	C	R	5
46	555	TAX	Duty/Tax/Fee Details	M	M	1
47	560	MOA	Monetary Amount	C	D	1
			Segment Group 41: TDT	C	R	10
49	565	TDT	Details of Transport	M	M	1
50	610	UNS	Section Control	M	M	1
			Segment Group 45: MOA	M	M	8
52	620	MOA	Monetary Amount	M	M	1
			Segment Group 47: TAX-MOA	C	R	10
54	635	TAX	Duty/Tax/Fee Details	M	M	1
55	640	MOA	Monetary Amount	C	D	2
56	660	UNT	Message Trailer	M	M	1





Segment: UNH Message Header
Position: 005
Group:
Level: 0
Usage: Mandatory
Max Use: 1
Purpose: To head, identify and specify a message.
Dependency Notes:
Comments:
Notes:

Segment Notes.
 This segment is used to head, identify and specify a message.

 CE's 0065, 0052, 0054, and 0051: Indicate that the message is a UNSM Invoice based on the D.93A directory under the control of the United Nations.

 Example :
 UNH+1+INVOIC:D:93A:UN:VT0010

Data Element Summary

<u>Data Element</u>	<u>Component Element</u>	<u>Name</u>	<u>Base Attributes</u>	<u>User Attributes</u>
0062		MESSAGE REFERENCE NUMBER	M an..14	M
S009		MESSAGE IDENTIFIER	M	M
	0065	Message type identifier	M an..6	M
		INVOIC Invoice message		
	0052	Message type version number	M an..3	M
		D Draft version/UN/EDIFACT Directory		
	0054	Message type release number	M an..3	M
		93A Release 1993 - A		
	0051	Controlling agency	M an..2	M
		UN UN/ECE/TRADE/WP.4, United Nations Standard Messages (UNSM)		
	0057	Association assigned code	C an..6	R
		EDIT30 Pharos EDI Specification		
		VT0010 Defined by Volvo Logistics Corp		
0068		COMMON ACCESS REFERENCE	C an..35	N
S010		STATUS OF THE TRANSFER	C	N
	0070	Sequence message transfer number	M n..2	N
	0073	First/last sequence message transfer indication	C a1	N

Segment: **BGM** Beginning of Message
Position: 010
Group:
Level: 0
Usage: Mandatory
Max Use: 1
Purpose: To indicate the type and function of a message and to transmit the identifying number.
Dependency Notes:
Comments:
Notes:

Segment Notes.
 This segment is used to indicate the type and function of a message and to transmit the identifying number.

 It is recommended that the length of the document number be restricted to a maximum of 17 characters.

 CE 1001: It is of critical importance to use the appropriate document name qualifier relevant to the message.

 Example :
 BGM+380+432097'

 This example identifies the document as being an commercial invoice using the code value 380. The document has the reference number 432097.

Data Element Summary

<u>Data Element</u>	<u>Component Element</u>	<u>Name</u>	<u>Base Attributes</u>	<u>User Attributes</u>
C002		DOCUMENT/MESSAGE NAME	C	R
	1001	Document/message name, coded	C an..3	R
		380 Commercial invoice		
		381 Credit note		
	1131	Code list qualifier	C an..3	N
	3055	Code list responsible agency, coded	C an..3	N
	1000	Document/message name	C an..35	N
1004		DOCUMENT/MESSAGE NUMBER	C an..35	R
		Invoice number assigned by document sender.		
1225		MESSAGE FUNCTION, CODED	C an..3	N
4343		RESPONSE TYPE, CODED	C an..3	N

Segment: **DTM** Date/Time/Period
Position: 015
Group:
Level: 1
Usage: Mandatory
Max Use: 35
Purpose: To specify date, and/or time, or period.
Dependency Notes:
Comments:
Notes:

Segment Notes.
 This segment is used to specify the date or period of the invoice.

 Example :
 DTM+137:19971008:102' The document date is the 8th of October 1997.

Data Element Summary

<u>Data Element</u>	<u>Component Element</u>	<u>Name</u>	<u>Base Attributes</u>	<u>User Attributes</u>
C507		DATE/TIME/PERIOD	M	M
	2005	Date/time/period qualifier	M an..3	M
		137 Document/message date/time		
	2380	Date/time/period	C an..35	R
	2379	Date/time/period format qualifier	C an..3	R
		102 CCYYMMDD		

Group: **NAD** Segment Group 2
Position: 050
Group:
Level: 1
Usage: Conditional (Required)
Max Use: 3

Segment Summary						
	<u>Pos.</u>	<u>Seg.</u>	<u>Name</u>	<u>Req.</u>	<u>Max.</u>	<u>Group:</u>
	<u>No.</u>	<u>ID</u>		<u>Des.</u>	<u>Use</u>	<u>Repeat</u>
M	050	NAD	Name and Address	M	1	
			Segment Group 3	O		4
			Segment Group 5	C		1

Segment: **NAD** Name and Address
Position: 050 (Trigger Segment)
Group: Segment Group 2 Conditional (Required)
Level: 1
Usage: Mandatory
Max Use: 1
Purpose: To specify the name/address and their related function, structured by CO80 thru 3207.
Dependency Notes:
Comments:
Notes:

Segment Notes.
 This segment is used to identify the trading parties involved in the invoice process. Identification of the buyer and supplier of transport services is mandatory in the Invoice, expressed as the issuer of the invoice and the invoicee.
 The payment receiving party needs to be specified if different to the invoice issuer.

 Example :
 NAD+II+123456::92++Party name+Street and number+City name++Postcode
 ID+Country coded'
 NAD+PE+234567::92++Party name+Street and number+City name++Postcode
 ID+Country coded'
 NAD+IV+5412345000020::87++Party name+Street and number+City name++Postcode
 ID+Country coded'

Data Element Summary				
Data Element	Component Element	Name	Base Attributes	User Attributes
3035		PARTY QUALIFIER	M an..3	M
		II Issuer of invoice		
		Used to identify issuer of invoice in NAD 3039.		
		IV Invoicee		
	Used to identify customer no in NAD 3039			
	PE Payee			
	Must be used if other payee than issuer of invoice.			
C082		PARTY IDENTIFICATION DETAILS	C	R
		When DE 3035 is II, code issued by Volvo must be used in CE 3039.		
		When DE 3035 is PE, code issued by Volvo must be used in CE 3039.		
		When DE 3035 is IV, customer number issued by carrier must be used in CE 3039.		
	3039 Party id identification		M an..17	M
	II: Code.			
	PE: Code, when payee, other than issuer of invoice.			
	IV: Customer number.			
	1131 Code list qualifier		C an..3	N
	3055 Code list responsible agency, coded		C an..3	R
	87 Assigned by carrier			
	92 Assigned by buyer or buyer's agent			
C058		NAME AND ADDRESS	C	N
	3124	Name and address line	M an..35	N
	3124	Name and address line	C an..35	N
	3124	Name and address line	C an..35	N
	3124	Name and address line	C an..35	N
	3124	Name and address line	C an..35	N
C080		PARTY NAME	C	R
	3036	Party name	M an..35	M
	3036	Party name	C an..35	D
		If more information is needed.		
	3036	Party name	C an..35	N
	3036	Party name	C an..35	N

	3036	Party name	C	an..35	N
	3045	Party name format, coded	C	an..3	N
C059		STREET	C		R
	3042	Street and number/p.o. box	M	an..35	M
	3042	Street and number/p.o. box	C	an..35	D
		If more information is needed.			
	3042	Street and number/p.o. box	C	an..35	N
3164		CITY NAME	C	an..35	R
3229		COUNTRY SUB-ENTITY IDENTIFICATION	C	an..9	N
3251		POSTCODE IDENTIFICATION	C	an..9	R
3207		COUNTRY, CODED	C	an..3	R

Group: **RFF** Segment Group 3
Position: 065
Group: Segment Group 2 Conditional (Required)
Level: 2
Usage: Optional (Required)
Max Use: 4

Segment Summary

	<u>Pos.</u>	<u>Seg.</u>	<u>Name</u>	<u>Req.</u>	<u>Max.</u>	<u>Group:</u>
	<u>No.</u>	<u>ID</u>		<u>Des.</u>	<u>Use</u>	<u>Repeat</u>
M	065	RFF	Reference	M	1	

Segment: **RFF** Reference
Position: 065 (Trigger Segment)
Group: Segment Group 3 Optional (Required)
Level: 2
Usage: Mandatory
Max Use: 1
Purpose: To specify a reference.
Dependency Notes:
Comments:
Notes:

Segment Notes.

This segment is used to specify reference numbers related to the party identified in the previous NAD segment.

The RFF-segment group must occur with VA in RFF-1153.

Example:
RFF+VA:VR12345'
VAT registration number (of organisation in preceding NAD) is VR12345

Data Element Summary

<u>Data Element</u>	<u>Component Element</u>	<u>Name</u>	<u>Base Attributes</u>	<u>User Attributes</u>
C506		REFERENCE	M	M
	1153	Reference qualifier	M an..3	M
		ADE Account number		
		BGI Bank giro number		
		FF Freight forwarder's reference number		
		PGI Post giro number		
		VA VAT registration number		
	1154	Reference number	C an..35	R
	1156	Line number	C an..6	N
	4000	Reference version number	C an..35	N

Group: **CTA** Segment Group 5
Position: 085
Group: Segment Group 2 Conditional (Required)
Level: 2
Usage: Conditional (Dependent)
Max Use: 1

Segment Summary

	<u>Pos.</u>	<u>Seg.</u>	<u>Name</u>	<u>Req.</u>	<u>Max.</u>	<u>Group:</u>
	<u>No.</u>	<u>ID</u>		<u>Des.</u>	<u>Use</u>	<u>Repeat</u>
M	085	CTA	Contact Information	M	1	

Segment: **CTA Contact Information**
Position: 085 (Trigger Segment)
Group: Segment Group 5 Conditional (Dependent)
Level: 2
Usage: Mandatory
Max Use: 1
Purpose: To identify a person or a department to whom communication should be directed.
Dependency Notes:
Comments:
Notes:

Segment Notes.
 This segment is used to identify the department and/or person within the party specified in the NAD.

 The group must be used when preceding NAD 3035 = IV

 Example:
 CTA+IC+Department no:signature'
 CTA+IC+:workflow reference'

Data Element Summary

<u>Data Element</u>	<u>Component Element</u>	<u>Name</u>	<u>Base Attributes</u>	<u>User Attributes</u>
3139		CONTACT FUNCTION, CODED IC Information contact	C an..3	R
C056		DEPARTMENT OR EMPLOYEE DETAILS	C	
	3413	Department or employee identification Department no when receiver is Volvo Logistics.	C an..17	D
	3412	Department or employee Signature when receiver is Volvo Logistics. Workflow reference when receiver is other Volvo companies.	C an..35	R

Group: **CUX** Segment Group 7
Position: 110
Group:
Level: 1
Usage: Conditional (Required)
Max Use: 5

Segment Summary						
	<u>Pos.</u>	<u>Seg.</u>	<u>Name</u>	<u>Req.</u>	<u>Max.</u>	<u>Group:</u>
	<u>No.</u>	<u>ID</u>		<u>Des.</u>	<u>Use</u>	<u>Repeat</u>
M	110	CUX	Currencies	M	1	

Segment: CUX Currencies
Position: 110 (Trigger Segment)
Group: Segment Group 7 Conditional (Required)
Level: 1
Usage: Mandatory
Max Use: 1
Purpose: To specify currencies used in the transaction and relevant details for the rate of exchange.
Dependency Notes:
Comments:
Notes:

Segment Notes.
This segment is used to specify currency information for the complete invoice.

The general rule for calculating the rate of exchange is as follows :
Reference Currency multiplied by Rate = Target Currency.

Example :
For international trade, the invoicing currency is identified as Swedish Crowns but the payment currency is to be in EURO. The rate of exchange between the two is 0.108236 EURO to 1 SEK.

CUX+2:SEK:10+3:EUR:11+0.108236'
CUX+2:SEK:10+3:SEK:11+1.0'

Data Element Summary				
Data Element	Component Element	Name	Base Attributes	User Attributes
C504		CURRENCY DETAILS	C	R
	6347	Currency details qualifier	M an..3	M
		2 Reference currency		
	6345	Currency, coded	C an..3	R
		ISO 4217 three alpha		
	6343	Currency qualifier	C an..3	R
	10 Pricing currency			
	6348	Currency rate base	C n..4	N
C504		CURRENCY DETAILS	C	R
	6347	Currency details qualifier	M an..3	M
		3 Target currency		
	6345	Currency, coded	C an..3	R
		ISO 4217 three alpha		
	6343	Currency qualifier	C an..3	R
	11 Payment currency			
	6348	Currency rate base	C n..4	N
5402		RATE OF EXCHANGE	C n..12	D
		The rate of exchange which applies to the currencies.		
6341		CURRENCY MARKET EXCHANGE, CODED	C an..3	N

Group: **PAT** Segment Group 8
Position: 120
Group:
Level: 1
Usage: Conditional (Required)
Max Use: 5

Segment Summary

	<u>Pos.</u>	<u>Seg.</u>	<u>Name</u>	<u>Req.</u>	<u>Max.</u>	<u>Group:</u>
	<u>No.</u>	<u>ID</u>		<u>Des.</u>	<u>Use</u>	<u>Repeat</u>
M	120	PAT	Payment Terms Basis	M	1	
R	125	DTM	Date/Time/Period	C	1	

Segment: **PAT** Payment Terms Basis
Position: 120 (Trigger Segment)
Group: Segment Group 8 Conditional (Required)
Level: 1
Usage: Mandatory
Max Use: 1
Purpose: To specify the payment terms basis.

Dependency Notes:
Comments:

Notes: Segment Notes.
 This segment is used by the issuer of the invoice to specify the payment terms for the complete invoice.

 Segment group must occur with DE 4279 = 1 and CE 2475 = 66

 Example :
 PAT+1++66'

Data Element Summary

<u>Data Element</u>	<u>Component Element</u>	<u>Name</u>	<u>Base Attributes</u>	<u>User Attributes</u>
4279		PAYMENT TERMS TYPE QUALIFIER	M an..3	M
	1	Basic		
C110		PAYMENT TERMS	C	N
	4277	Terms of payment identification	M an..17	N
	1131	Code list qualifier	C an..3	N
	3055	Code list responsible agency, coded	C an..3	N
	4276	Terms of payment	C an..35	N
	4276	Terms of payment	C an..35	N
C112		TERMS/TIME INFORMATION	C	R
	2475	Payment time reference, coded	M an..3	M
	66	Specified date		
	2009	Time relation, coded	C an..3	N
	2151	Type of period, coded	C an..3	N
	2152	Number of periods	C n..3	N

Segment: **DTM** Date/Time/Period
Position: 125
Group: Segment Group 8 Conditional (Required)
Level: 2
Usage: Conditional (Required)
Max Use: 1
Purpose: To specify date, and/or time, or period.

Dependency Notes:

Comments:

Notes:

Segment Notes.
 This segment is used to specify any dates associated with the payment terms for the invoice.

Example :
 Net due date for payment the 31st August 1997.

DTM+13:19970831:102'

Data Element Summary

<u>Data Element</u>	<u>Component Element</u>	<u>Name</u>	<u>Base Attributes</u>	<u>User Attributes</u>
C507		DATE/TIME/PERIOD	M	M
	2005	Date/time/period qualifier	M an..3	M
		13 Terms net due date		
	2380	Date/time/period	C an..35	R
	2379	Date/time/period format qualifier	C an..3	R
		102 CCYYMMDD		

Group: **LIN** Segment Group 22
Position: 285
Group:
Level: 1
Usage: Conditional (Required)
Max Use: 200000

Segment Summary

	<u>Pos.</u>	<u>Seg.</u>	<u>Name</u>	<u>Req.</u>	<u>Max.</u>	<u>Group:</u>
	<u>No.</u>	<u>ID</u>		<u>Des.</u>	<u>Use</u>	<u>Repeat</u>
M	285	LIN	Line Item	M	1	
D	300	MEA	Measurements	C	3	
D	305	QTY	Quantity	C	3	
R	320	DTM	Date/Time/Period	C	8	
D	340	FTX	Free Text	C	5	
			Segment Group 23	C		1
			Segment Group 26	C		10
			Segment Group 27	C		1
			Segment Group 29	C		2
			Segment Group 30	C		5
			Segment Group 31	C		2
			Segment Group 35	C		15
			Segment Group 41	C		10

Segment: **LIN** Line Item
Position: 285 (Trigger Segment)
Group: Segment Group 22 Conditional (Required)
Level: 1
Usage: Mandatory
Max Use: 1
Purpose: To identify a line item and configuration.
Dependency Notes:
Comments:
Notes:

Segment Notes.
 This segment is used to indicate the beginning of the detail section of the Invoice message. The detail section is formed by a repeating group of segments, always starting with a LIN segment.

 In a Freight Invoice a LIN group is typically used to give detailed information on a single consignment, being part of the total invoice message.

 Example :
 LIN+1'

 When using both credit and debit lines in the same invoice, these lines need to be separated with a special code. See example below.

 Example:
 LIN+1+ZDB' (debit lines)
 LIN+1+ZCR' (credit lines)

Data Element Summary

<u>Data Element</u>	<u>Component Element</u>	<u>Name</u>	<u>Base Attributes</u>	<u>User Attributes</u>
1082		LINE ITEM NUMBER	C n..6	R
		Invoice lines in numerical order.		
1229		ACTION REQUEST/NOTIFICATION, CODED	C an..3	D
		Only used when there are credit and debit lines in the same invoice.		
		ZCR	Credit line	
		ZDB	Debit line	
C212		ITEM NUMBER IDENTIFICATION	C	N
	7140	Item number	C an..35	N
	7143	Item number type, coded	C an..3	N
	1131	Code list qualifier	C an..3	N
	3055	Code list responsible agency, coded	C an..3	N
5495		SUB-LINE INDICATOR, CODED	C an..3	N
1222		CONFIGURATION LEVEL	C n..2	N
7083		CONFIGURATION, CODED	C an..3	N

Segment: **MEA** Measurements
Position: 300
Group: Segment Group 22 Conditional (Required)
Level: 2
Usage: Conditional (Dependent)
Max Use: 3
Purpose: To specify physical measurements, including dimension tolerances, weights and counts.
Dependency Notes:
Comments:
Notes:

Segment Notes.
 This segment is used to specify the physical dimensions of goods being transported.

 Example :
 MEA+PD+AAD+KGM:2.0'
 MEA+PD+VOL+MTQ:3.5'

Data Element Summary				
Data Element	Component Element	Name	Base Attributes	User Attributes
6311		MEASUREMENT APPLICATION QUALIFIER	M an..3	M
		PD Physical dimensions (product ordered)		
C502		MEASUREMENT DETAILS	C	R
	6313	Measurement dimension, coded	C an..3	R
		AAD Total gross weight		
		LMT Loading meters		
		VOL Volume		
	6321	Measurement significance, coded	C an..3	N
	6155	Measurement attribute, coded	C an..3	N
C174		VALUE/RANGE	C	R
	6411	Measure unit qualifier	M an..3	M
		KGM Kilogram		
		MTQ Cubic metre		
		MTR Metre		
	6314	Measurement value	C n..18	R
	6162	Range minimum	C n..18	N
	6152	Range maximum	C n..18	N
7383		SURFACE/LAYER INDICATOR, CODED	C an..3	N

Segment: QTY Quantity
Position: 305
Group: Segment Group 22 Conditional (Required)
Level: 2
Usage: Conditional (Dependent)
Max Use: 3
Purpose: To specify a pertinent quantity.
Dependency Notes:
Comments:
Notes:

Segment Notes.
 This segment is used to specify quantities related to freight calculation.

 Example :
 QTY+100:40:KGM'

Data Element Summary

<u>Data Element</u>	<u>Component Element</u>	<u>Name</u>	<u>Base Attributes</u>	<u>User Attributes</u>
C186		QUANTITY DETAILS	M	M
	6063	Quantity qualifier	M an..3	M
		49 Chargeable distance		
		100 Chargeable weight		
		105 Chargeable number of rail wagons		
	6060	Quantity	M n..15	M
	6411	Measure unit qualifier	C an..3	
		KGM Kilogram		
		KMT Kilometre		
		PCE Pieces		

Segment: **DTM** Date/Time/Period
Position: 320
Group: Segment Group 22 Conditional (Required)
Level: 2
Usage: Conditional (Required)
Max Use: 8
Purpose: To specify date, and/or time, or period.

Dependency Notes:

Comments:

Notes:

Segment Notes.
 This segment is used to specify the date of departure of the current line item.
 The segment must occur at least 1 time with qualifier 136 in DTM-2005

 Example :
 DTM+136:19970801:102'

Data Element Summary

<u>Data Element</u>	<u>Component Element</u>	<u>Name</u>	<u>Base Attributes</u>	<u>User Attributes</u>
C507		DATE/TIME/PERIOD	M	M
	2005	Date/time/period qualifier	M an..3	M
		7 Effective date/time		
		35 Delivery date/time, actual		
		136 Departure date/time		
		143 Acceptance date/time of goods		
		155 Accounting period start date		
		156 Accounting period end date		
		178 Arrival date/time, actual		
		ZGR Date of registration		
	2380	Date/time/period	C an..35	R
	2379	Date/time/period format qualifier	C an..3	R
		102 CCYYMMDD		

Segment: **FTX** Free Text
Position: 340
Group: Segment Group 22 Conditional (Required)
Level: 2
Usage: Conditional (Dependent)
Max Use: 5
Purpose: To provide free form or coded text information.
Dependency Notes:
Comments:
Notes:

Segment Notes.
 This segment is used to provide free form or coded text information which applies to the current line item.

 The use of the FTX segment in free form is not recommended since in most cases it inhibits automatic processing of the Invoice. Coded references to standard texts is an available functionality which enables automatic processing and reduces transmission and processing overheads. Standard texts should be mutually defined among trading partners and can be used to cover legal or other requirements.

 Example :
 FTX+TRA+1++Text'

 Dependency Notes :
 Used after special agreements.

Data Element Summary

<u>Data Element</u>	<u>Component Element</u>	<u>Name</u>	<u>Base Attributes</u>	<u>User Attributes</u>
4451		TEXT SUBJECT QUALIFIER	M an..3	M
		TRA Transportation information		
4453		TEXT FUNCTION, CODED	C an..3	R
		1 Text for subsequent use		
C107		TEXT REFERENCE	C	N
	4441	Free text, coded	M an..3	N
	1131	Code list qualifier	C an..3	N
	3055	Code list responsible agency, coded	C an..3	N
C108		TEXT LITERAL	C	R
	4440	Free text	M an..70	M
	4440	Free text	C an..70	D
		If more information is needed.		
	4440	Free text	C an..70	D
	4440	Free text	C an..70	D
	4440	Free text	C an..70	D
3453		LANGUAGE, CODED	C an..3	N
		ISO 639 two alpha code		

Group: **MOA** Segment Group 23
Position: 345
Group: Segment Group 22 Conditional (Required)
Level: 2
Usage: Conditional (Required)
Max Use: 1

Segment Summary

	<u>Pos.</u>	<u>Seg.</u>	<u>Name</u>	<u>Req.</u>	<u>Max.</u>	<u>Group:</u>
	<u>No.</u>	<u>ID</u>		<u>Des.</u>	<u>Use</u>	<u>Repeat</u>
M	345	MOA	Monetary Amount	M	1	

Segment: **MOA** Monetary Amount
Position: 345 (Trigger Segment)
Group: Segment Group 23 Conditional (Required)
Level: 2
Usage: Mandatory
Max Use: 1
Purpose: To specify a monetary amount.

Dependency Notes:

Comments:

Notes:

Segment Notes.
 This segment is used to specify monetary amounts related to the current line item.
 Line item amount exclusive of VAT.
 Extra charges should be included in line item amount.

 Dependency note:
 CE 6345 to be used if amount is expressed in other currency than the calculation currency
 of the invoice.

 Example :
 MOA+203:580'

Data Element Summary

<u>Data Element</u>	<u>Component Element</u>	<u>Name</u>	<u>Base Attributes</u>	<u>User Attributes</u>
C516		MONETARY AMOUNT	M	M
	5025	Monetary amount type qualifier	M an..3	M
		203 Line item amount		
	5004	Monetary amount	C n..18	R
	6345	Currency, coded	C an..3	D
		ISO 4217 three alpha code. Must be used if other currency than the calc currency.		
	6343	Currency qualifier	C an..3	N
	4405	Status, coded	C an..3	N

Group: **RFF** Segment Group 26
Position: 395
Group: Segment Group 22 Conditional (Required)
Level: 2
Usage: Conditional (Required)
Max Use: 10

Segment Summary

	<u>Pos.</u>	<u>Seg.</u>		<u>Req.</u>	<u>Max.</u>	<u>Group:</u>
	<u>No.</u>	<u>ID</u>	<u>Name</u>	<u>Des.</u>	<u>Use</u>	<u>Repeat</u>
M	395	RFF	Reference	M	1	

Segment: **RFF** Reference
Position: 395 (Trigger Segment)
Group: Segment Group 26 Conditional (Required)
Level: 2
Usage: Mandatory
Max Use: 1
Purpose: To specify a reference.
Dependency Notes:
Comments:
Notes:

Segment Notes.
 This segment is used to provide references to related documents, examples see code list.
 This segment must occur at least once per invoice line.

 If more than 1 Consignor's reference number exists for a line item, the segment should be repeated with qualifier CU.

 Example :
 RFF+AAS:1234567'
 RFF+CU:ABCD'
 RFF+CU:EFGH'

Data Element Summary

<u>Data Element</u>	<u>Component Element</u>	<u>Name</u>	<u>Base Attributes</u>	<u>User Attributes</u>
C506		REFERENCE	M	M
	1153	Reference qualifier	M an..3	M
		AAO	Consignee's shipment reference number	
		AAS	Transport document number	
		CT	Contract number	
		CU	Consignor's reference number	
	1154	Reference number	C an..35	R
		AAO: Trailers and containers shipped from Sweden - Trailer no + loading date (Ex: ABC123 YYMMDD) - Container-no + loading date (Ex: ACLU1234567YYMMDD) AAS: Air Domestic - Transport document no (CMR-no) Import gen cargo - To be agreed upon (Ex: VTD-no) Distribution built vehicles - Shipment note id/VIN number CT : Railway and shipped cars/vehicles CU : Export gen cargo (Ex: A123456) Packing material (Ex: 123456-01) Air: Consignor's reference		
	1156	Line number	C an..6	N
	4000	Reference version number	C an..35	N

Group: **PAC** Segment Group 27
Position: 405
Group: Segment Group 22 Conditional (Required)
Level: 2
Usage: Conditional (Required)
Max Use: 1

Segment Summary

	<u>Pos.</u>	<u>Seg.</u>		<u>Req.</u>	<u>Max.</u>	<u>Group:</u>
	<u>No.</u>	<u>ID</u>	<u>Name</u>	<u>Des.</u>	<u>Use</u>	<u>Repeat</u>
M	405	PAC	Package	M	1	

Segment: **PAC** Package
Position: 405 (Trigger Segment)
Group: Segment Group 27 Conditional (Required)
Level: 2
Usage: Mandatory
Max Use: 1
Purpose: To describe the number and type of packages/physical units.
Dependency Notes:
Comments:
Notes:

Segment Notes.
 This segment is used to specify the number of packages for the current line item.

 The segment is also used to specify the number of cars and chassies for the current line item.

 Example :
 PAC+3'

Data Element Summary				
Data Element	Component Element	Name	Base Attributes	User Attributes
7224		NUMBER OF PACKAGES	C n..8	R
		Used for number of packages, cars and chassies.		
C531		PACKAGING DETAILS	C	N
	7075	Packaging level, coded	C an..3	N
	7233	Packaging related information, coded	C an..3	N
	7073	Packaging terms and conditions, coded	C an..3	N
C202		PACKAGE TYPE	C	
	7065	Type of packages identification	C an..7	N
	1131	Code list qualifier	C an..3	N
	3055	Code list responsible agency, coded	C an..3	N
	7064	Type of packages	C an..35	N
C402		PACKAGE TYPE IDENTIFICATION	C	N
	7077	Item description type, coded	M an..3	N
	7064	Type of packages	M an..35	N
	7143	Item number type, coded	C an..3	N
	7064	Type of packages	C an..35	N
	7143	Item number type, coded	C an..3	N
C532		RETURNABLE PACKAGE DETAILS	C	N
	8395	Returnable package freight payment responsibility, coded	C an..3	N
	8393	Returnable package load contents, coded	C an..3	N

Group: **LOC** Segment Group 29
Position: 435
Group: Segment Group 22 Conditional (Required)
Level: 2
Usage: Conditional (Required)
Max Use: 2

Segment Summary

	<u>Pos.</u> <u>No.</u>	<u>Seg.</u> <u>ID</u>	<u>Name</u>	<u>Req.</u> <u>Des.</u>	<u>Max.</u> <u>Use</u>	<u>Group:</u> <u>Repeat</u>
M	435	LOC	Place/Location Identification	M	1	

Segment: **LOC** Place/Location Identification
Position: 435 (Trigger Segment)
Group: Segment Group 29 Conditional (Required)
Level: 2
Usage: Mandatory
Max Use: 1
Purpose: To identify a country/place/location/related location one/related location two.
Dependency Notes:
Comments:
Notes: Example :
 LOC+5+:::GOTHENBURG'

Data Element Summary				
<u>Data Element</u>	<u>Component Element</u>	<u>Name</u>	<u>Base Attributes</u>	<u>User Attributes</u>
3227		PLACE/LOCATION QUALIFIER	M an..3	M
		5 Place of departure		
		8 Place of destination		
C517		LOCATION IDENTIFICATION	C	R
	3225	Place/location identification	C an..25	N
	1131	Code list qualifier	C an..3	N
	3055	Code list responsible agency, coded	C an..3	N
	3224	Place/location	C an..17	R
C519		RELATED LOCATION ONE IDENTIFICATION	C	N
	3223	Related place/location one identification	C an..25	N
	1131	Code list qualifier	C an..3	N
	3055	Code list responsible agency, coded	C an..3	N
	3222	Related place/location one	C an..70	N
C553		RELATED LOCATION TWO IDENTIFICATION	C	N
	3233	Related place/location two identification	C an..25	N
	1131	Code list qualifier	C an..3	N
	3055	Code list responsible agency, coded	C an..3	N
	3232	Related place/location two	C an..70	N
5479		RELATION, CODED	C an..3	N

Group: **TAX** Segment Group 30
Position: 450
Group: Segment Group 22 Conditional (Required)
Level: 2
Usage: Conditional (Required)
Max Use: 5

Segment Summary						
	<u>Pos.</u>	<u>Seg.</u>	<u>Name</u>	<u>Req.</u>	<u>Max.</u>	<u>Group:</u>
	<u>No.</u>	<u>ID</u>		<u>Des.</u>	<u>Use</u>	<u>Repeat</u>
M	450	TAX	Duty/Tax/Fee Details	M	1	
D	455	MOA	Monetary Amount	C	1	

Segment: **TAX** Duty/Tax/Fee Details
Position: 450 (Trigger Segment)
Group: Segment Group 30 Conditional (Required)
Level: 2
Usage: Mandatory
Max Use: 1
Purpose: To specify relevant duty/tax/fee information.
Dependency Notes:
Comments:
Notes:

Segment Notes.
 This segment is used to specify tax details for the line item being invoiced.

 DE 5305:
 S = Standard rate. Used when VAT
 X = Exempt from tax.

 Example :
 TAX+7+VAT+++:::21+S'
 TAX+7+VAT+++:::0+X'

Data Element Summary				
Data Element	Component Element	Name	Base Attributes	User Attributes
5283		DUTY/TAX/FEE FUNCTION QUALIFIER	M an..3	M
		7 Tax		
C241		DUTY/TAX/FEE TYPE	C	R
	5153	Duty/tax/fee type, coded	C an..3	R
		VAT Value added tax		
	1131	Code list qualifier	C an..3	N
	3055	Code list responsible agency, coded	C an..3	N
	5152	Duty/tax/fee type	C an..35	N
C533		DUTY/TAX/FEE ACCOUNT DETAIL	C	N
	5289	Duty/tax/fee account identification	M an..6	N
	1131	Code list qualifier	C an..3	N
	3055	Code list responsible agency, coded	C an..3	N
5286		DUTY/TAX/FEE ASSESSMENT BASIS	C an..15	N
C243		DUTY/TAX/FEE DETAIL	C	R
	5279	Duty/tax/fee rate identification	C an..7	N
	1131	Code list qualifier	C an..3	N
	3055	Code list responsible agency, coded	C an..3	N
	5278	Duty/tax/fee rate	C an..17	R
		The actual rate (in per cent) of tax/duty.		
	5273	Duty/tax/fee rate basis identification	C an..12	N
	1131	Code list qualifier	C an..3	N
	3055	Code list responsible agency, coded	C an..3	N
5305		DUTY/TAX/FEE CATEGORY, CODED	C an..3	R
		S Standard rate		
		X Exempt from tax		
3446		PARTY TAX IDENTIFICATION NUMBER	C an..20	N

Segment: **MOA** Monetary Amount
Position: 455
Group: Segment Group 30 Conditional (Required)
Level: 3
Usage: Conditional (Dependent)
Max Use: 1
Purpose: To specify a monetary amount.
Dependency Notes:
Comments:
Notes:

Segment Notes.
 This segment is used to specify in monetary terms the amount of tax due on the preceding TAX segment

 Dependency note:
 CE 6345 to be used if VAT amount has to be expressed in an other currency than the calculation currency of the invoice.

 Example :
 MOA+124:21.80'

 21% (expressed in TAX segment) of 580 (expressed in SG23/MOA) = 21.80.

Data Element Summary

<u>Data Element</u>	<u>Component Element</u>	<u>Name</u>	<u>Base Attributes</u>	<u>User Attributes</u>
C516		MONETARY AMOUNT	M	M
	5025	Monetary amount type qualifier 124 Tax amount	M an..3	M
	5004	Monetary amount	C n..18	R
	6345	Currency, coded ISO 4217 three alpha code	C an..3	D
	6343	Currency qualifier	C an..3	N
	4405	Status, coded	C an..3	N

Group: **NAD** Segment Group 31
Position: 465
Group: Segment Group 22 Conditional (Required)
Level: 2
Usage: Conditional (Dependent)
Max Use: 2

Segment Summary

	<u>Pos.</u>	<u>Seg.</u>	<u>Name</u>	<u>Req.</u>	<u>Max.</u>	<u>Group:</u>
	<u>No.</u>	<u>ID</u>		<u>Des.</u>	<u>Use</u>	<u>Repeat</u>
M	465	NAD	Name and Address	M	1	

Segment: **NAD** Name and Address
Position: 465 (Trigger Segment)
Group: Segment Group 31 Conditional (Dependent)
Level: 2
Usage: Mandatory
Max Use: 1
Purpose: To specify the name/address and their related function, either by CO82 only and/or unstructured by CO58 or structured by CO80 thru 3207.

Dependency Notes:

Comments:

Notes:

Segment Notes.
 This segment is used to identify parties which are valid only for the current line item.

 This segment group can be omitted after special agreement.

 Example:
 If CO82 is not used, see following example.
 NAD+CZ+++Name+Street+City++postcode'

 If CO82 is used, see following example.
 NAD+CZ+16440::92++Name+Street+City++postcode'

Data Element Summary

<u>Data Element</u>	<u>Component Element</u>	<u>Name</u>	<u>Base Attributes</u>	<u>User Attributes</u>
3035		PARTY QUALIFIER	M an..3	M
		CN Consignee		
		CZ Consignor		
C082		PARTY IDENTIFICATION DETAILS	C	D
		Used after special agreement.		
	3039	Party id identification	M an..17	M
		Supplier number or suffix, codes provided by Volvo.		
	1131	Code list qualifier	C an..3	N
	3055	Code list responsible agency, coded	C an..3	R
		92 Assigned by buyer or buyer's agent		
C058		NAME AND ADDRESS	C	N
	3124	Name and address line	M an..35	N
	3124	Name and address line	C an..35	N
	3124	Name and address line	C an..35	N
	3124	Name and address line	C an..35	N
	3124	Name and address line	C an..35	N
C080		PARTY NAME	C	R
	3036	Party name	M an..35	M
	3036	Party name	C an..35	D
		If more information is needed.		
	3036	Party name	C an..35	N
	3036	Party name	C an..35	N
	3036	Party name	C an..35	N
	3045	Party name format, coded	C an..3	N
C059		STREET	C	R
	3042	Street and number/p.o. box	M an..35	M
	3042	Street and number/p.o. box	C an..35	D
		If more information is needed.		
	3042	Street and number/p.o. box	C an..35	N
3164		CITY NAME	C an..35	R
3229		COUNTRY SUB-ENTITY IDENTIFICATION	C an..9	N

3251
3207

POSTCODE IDENTIFICATION
COUNTRY, CODED

C an..9 R
C an..3 N

Group: **ALC** Segment Group 35
Position: 505
Group: Segment Group 22 Conditional (Required)
Level: 2
Usage: Conditional (Dependent)
Max Use: 15

Segment Summary

	<u>Pos.</u> <u>No.</u>	<u>Seg.</u> <u>ID</u>	<u>Name</u>	<u>Req.</u> <u>Des.</u>	<u>Max.</u> <u>Use</u>	<u>Group:</u> <u>Repeat</u>
M	505	ALC	Allowance or Charge	M	1	
			Segment Group 38	C		1
			Segment Group 40	C		5

Segment: **ALC** Allowance or Charge
Position: 505 (Trigger Segment)
Group: Segment Group 35 Conditional (Dependent)
Level: 2
Usage: Mandatory
Max Use: 1
Purpose: To identify allowance or charge details.
Dependency Notes:
Comments:
Notes:

Segment Notes.
 This segment is used to specify allowances or charges which apply to the line item being invoiced. (Ex: BAF, CAF etc).
 Main freight- allowance or charge shall not occur in the ALC-segment

 Example :
 ALC+C++6++COD::87' (charges)
 ALC+A++2++COD::87' (allowances)

Data Element Summary				
<u>Data Element</u>	<u>Component Element</u>	<u>Name</u>	<u>Base Attributes</u>	<u>User Attributes</u>
5463		ALLOWANCE OR CHARGE QUALIFIER	M an..3	M
		A Allowance		
		C Charge		
C552		ALLOWANCE/CHARGE INFORMATION	C	N
	1230	Allowance or charge number	C an..35	N
	5189	Charge/allowance description, coded	C an..3	N
4471		SETTLEMENT, CODED	C an..3	R
		2 Off invoice		
		6 Charge to be paid by customer		
1227		CALCULATION SEQUENCE INDICATOR, CODED	C an..3	N
C214		SPECIAL SERVICES IDENTIFICATION	C	R
	7161	Special services, coded	M an..3	M
		Code list shall be provided by the carrier.		
	1131	Code list qualifier	C an..3	N
	3055	Code list responsible agency, coded	C an..3	R
		87 Assigned by carrier		
	7160	Special service	C an..35	N

Group: **MOA** Segment Group 38
Position: 535
Group: Segment Group 35 Conditional (Dependent)
Level: 3
Usage: Conditional (Required)
Max Use: 1

Segment Summary

	<u>Pos.</u>	<u>Seg.</u>	<u>Name</u>	<u>Req.</u>	<u>Max.</u>	<u>Group:</u>
	<u>No.</u>	<u>ID</u>		<u>Des.</u>	<u>Use</u>	<u>Repeat</u>
M	535	MOA	Monetary Amount	M	1	

Segment: **MOA** Monetary Amount
Position: 535 (Trigger Segment)
Group: Segment Group 38 Conditional (Required)
Level: 3
Usage: Mandatory
Max Use: 1
Purpose: To specify a monetary amount.
Dependency Notes:
Comments:

Notes: Segment Notes.
 This segment is used to specify the amounts according to the codes in the ALC-segment.

 Example :
 MOA+8:12.20'

Data Element Summary

<u>Data Element</u>	<u>Component Element</u>	<u>Name</u>	<u>Base Attributes</u>	<u>User Attributes</u>
C516		MONETARY AMOUNT	M	M
	5025	Monetary amount type qualifier	M an..3	M
		8 Allowance or charge amount		
	5004	Monetary amount	C n..18	R
	6345	Currency, coded	C an..3	D
		To be used if amount is expressed in other currency than calculation currency of the invoice (as given in Group7/CUX).		
	6343	Currency qualifier	C an..3	N
	4405	Status, coded	C an..3	N

Group: **TAX** Segment Group 40
Position: 555
Group: Segment Group 35 Conditional (Dependent)
Level: 3
Usage: Conditional (Required)
Max Use: 5

Segment Summary

	Pos.	Seg.	Name	Req.	Max.	Group:
	No.	ID		Des.	Use	Repeat
M	555	TAX	Duty/Tax/Fee Details	M	1	
D	560	MOA	Monetary Amount	C	1	

Segment: TAX Duty/Tax/Fee Details
Position: 555 (Trigger Segment)
Group: Segment Group 40 Conditional (Required)
Level: 3
Usage: Mandatory
Max Use: 1
Purpose: To specify relevant duty/tax/fee information.
Dependency Notes:
Comments:
Notes:

Segment Notes.
 This segment is used to identify any taxes or duties which apply to the allowances or charges at LIN level.

 DE 5305:
 S = Standard rate. Used when VAT
 X = Exempt from tax.

 Example :
 TAX+7+VAT+++:::21+S'
 TAX+7+VAT+++:::0+X'

Data Element Summary				
Data Element	Component Element	Name	Base Attributes	User Attributes
5283		DUTY/TAX/FEE FUNCTION QUALIFIER	M an..3	M
		7 Tax		
C241		DUTY/TAX/FEE TYPE	C	R
	5153	Duty/tax/fee type, coded	C an..3	
		VAT Value added tax		
	1131	Code list qualifier	C an..3	N
	3055	Code list responsible agency, coded	C an..3	N
	5152	Duty/tax/fee type	C an..35	N
C533		DUTY/TAX/FEE ACCOUNT DETAIL	C	N
	5289	Duty/tax/fee account identification	M an..6	N
	1131	Code list qualifier	C an..3	N
	3055	Code list responsible agency, coded	C an..3	N
5286		DUTY/TAX/FEE ASSESSMENT BASIS	C an..15	N
C243		DUTY/TAX/FEE DETAIL	C	
	5279	Duty/tax/fee rate identification	C an..7	N
	1131	Code list qualifier	C an..3	N
	3055	Code list responsible agency, coded	C an..3	N
	5278	Duty/tax/fee rate	C an..17	R
		The actual rate (in per cent) of tax/duty.		
	5273	Duty/tax/fee rate basis identification	C an..12	N
	1131	Code list qualifier	C an..3	N
	3055	Code list responsible agency, coded	C an..3	N
5305		DUTY/TAX/FEE CATEGORY, CODED	C an..3	R
		S Standard rate		
		X Exempt from tax		
3446		PARTY TAX IDENTIFICATION NUMBER	C an..20	N

Segment: **MOA** Monetary Amount
Position: 560
Group: Segment Group 40 Conditional (Required)
Level: 4
Usage: Conditional (Dependent)
Max Use: 1
Purpose: To specify a monetary amount.
Dependency Notes:
Comments:
Notes:

Segment Notes.
 This segment is used to specify in monetary terms the amount of tax due for the allowances and charges for the current line item.

 Code 125 in CE 5025 used after special agreement.

 Example :
 MOA+124:21.80'

Data Element Summary

<u>Data Element</u>	<u>Component Element</u>	<u>Name</u>	<u>Base Attributes</u>	<u>User Attributes</u>
C516		MONETARY AMOUNT	M	M
	5025	Monetary amount type qualifier	M an..3	M
		124 Tax amount		
		125 Taxable amount		
	5004	Monetary amount	C n..18	R
	6345	Currency, coded	C an..3	N
	6343	Currency qualifier	C an..3	N
	4405	Status, coded	C an..3	N

Group: **TDT** Segment Group 41
Position: 565
Group: Segment Group 22 Conditional (Required)
Level: 2
Usage: Conditional (Required)
Max Use: 10

Segment Summary

	<u>Pos.</u>	<u>Seg.</u>		<u>Req.</u>	<u>Max.</u>	<u>Group:</u>
	<u>No.</u>	<u>ID</u>	<u>Name</u>	<u>Des.</u>	<u>Use</u>	<u>Repeat</u>
M	565	TDT	Details of Transport	M	1	

Segment: **TDT** Details of Transport
Position: 565 (Trigger Segment)
Group: Segment Group 41 Conditional (Required)
Level: 2
Usage: Mandatory
Max Use: 1
Purpose: To specify the transport details such as mode of transport, its conveyance reference number and the identification of the means of transport.

Dependency Notes:

Comments:

Notes:

Segment Notes.
This segment is used to specify the transport means used for the product being invoiced. If more than one means of transport is used this segment should be repeated. (Max use 10).
Example :
TDT+20++3+++++:::Number'

Data Element Summary				
Data Element	Component Element	Name	Base Attributes	User Attributes
8051		TRANSPORT STAGE QUALIFIER	M an..3	M
		10 Pre-carriage transport		
		20 Main-carriage transport		
		30 On-carriage transport		
8028		CONVEYANCE REFERENCE NUMBER	C an..17	D
		Used when available.		
C220		MODE OF TRANSPORT	C	D
		To be agreed upon		
	8067	Mode of transport, coded	C an..3	R
		1 Sea		
		2 Rail		
		3 Road		
		4 Air		
		5 Post		
		6 Multimodal		
		100 Courier		
	8066	Mode of transport	C an..17	N
C228		TRANSPORT MEANS	C	N
	8179	Type of means of transport identification	C an..8	N
	8178	Type of means of transport	C an..17	N
C040		CARRIER	C	N
	3127	Carrier identification	C an..17	N
	1131	Code list qualifier	C an..3	N
	3055	Code list responsible agency, coded	C an..3	N
	3128	Carrier name	C an..35	N
8101		TRANSIT DIRECTION, CODED	C an..3	N
C401		EXCESS TRANSPORTATION INFORMATION	C	N
	8457	Excess transportation reason, coded	M an..3	N
	8459	Excess transportation responsibility, coded	M an..3	N
	7130	Customer authorization number	C an..17	N
C222		TRANSPORT IDENTIFICATION	C	R
	8213	Id of means of transport identification	C an..9	N
	1131	Code list qualifier	C an..3	N
	3055	Code list responsible agency, coded	C an..3	N
	8212	Id of the means of transport	C an..17	R
		Vehicle license plate/Aircraft Number		
	8453	Nationality of means of transport, coded	C an..3	N

Segment: **UNS** Section Control
Position: 610
Group:
Level: 0
Usage: Mandatory
Max Use: 1
Purpose: To separate header, detail and summary sections of a message.

Dependency Notes:

Comments:

Notes:

Segment Notes.
 This segment is used to identify the break between the message detail and message trailer sections.

 Example :
 UNS+S'

Data Element Summary

<u>Data Element</u>	<u>Component Element</u>	<u>Name</u>	<u>Base Attributes</u>	<u>User Attributes</u>
0081		SECTION IDENTIFIER	M a1	M

Group: **MOA** Segment Group 45
Position: 620
Group:
Level: 1
Usage: Mandatory
Max Use: 8

Segment Summary						
	<u>Pos.</u>	<u>Seg.</u>	<u>Name</u>	<u>Req.</u>	<u>Max.</u>	<u>Group:</u>
	<u>No.</u>	<u>ID</u>		<u>Des.</u>	<u>Use</u>	<u>Repeat</u>
M	620	MOA	Monetary Amount	M	1	

Segment: **MOA** Monetary Amount
Position: 620 (Trigger Segment)
Group: Segment Group 45 Mandatory
Level: 1
Usage: Mandatory
Max Use: 1
Purpose: To specify a monetary amount.
Dependency Notes:
Comments:
Notes:

Segment Notes.
 This segment is used to detail total monetary values due for the entire invoice.

 Example :
 MOA+9:601.80'
 MOA+125:580'
 MOA+176:21.80'

Data Element Summary

<u>Data Element</u>	<u>Component Element</u>	<u>Name</u>	<u>Base Attributes</u>	<u>User Attributes</u>
C516		MONETARY AMOUNT	M	M
	5025	Monetary amount type qualifier	M an..3	M
		9 Amount due/amount payable		
		125 Taxable amount		
		176 Message total duty/tax/fee amount		
	5004	Monetary amount	C n..18	R
	6345	Currency, coded	C an..3	D
		Must be used if other currency than SEK.		
	6343	Currency qualifier	C an..3	N
	4405	Status, coded	C an..3	N

Group: **TAX** Segment Group 47
Position: 635
Group:
Level: 1
Usage: Conditional (Required)
Max Use: 10

Segment Summary

	<u>Pos.</u>	<u>Seg.</u>	<u>Name</u>	<u>Req.</u>	<u>Max.</u>	<u>Group:</u>
	<u>No.</u>	<u>ID</u>		<u>Des.</u>	<u>Use</u>	<u>Repeat</u>
M	635	TAX	Duty/Tax/Fee Details	M	1	
D	640	MOA	Monetary Amount	C	2	

Segment: TAX Duty/Tax/Fee Details
Position: 635 (Trigger Segment)
Group: Segment Group 47 Conditional (Required)
Level: 1
Usage: Mandatory
Max Use: 1
Purpose: To specify relevant duty/tax/fee information.
Dependency Notes:
Comments:
Notes:

Segment Notes.
 This segment is used to specify the total taxes or duties due on the complete invoice.

 DE 5283:
 7 = Specification of tax, if any, included in the calculation of the invoice totals
 9 = Information related to tax, only as information. For example when VAT amount has to be shown as an exact value in other currency than calculation currency.

 Example :
 TAX+7+VAT++++:21+S'
 TAX+7+VAT++++:0+X'
 TAX+9+VAT++++:25+S'

 TAX segment can be repeated if more than one standard rate of VAT included in the invoice.

Data Element Summary				
Data Element	Component Element	Name	Base Attributes	User Attributes
5283		DUTY/TAX/FEE FUNCTION QUALIFIER	X an..3	R
		7 Tax		
		9 Tax related information		
C241		DUTY/TAX/FEE TYPE	C	R
	5153	Duty/tax/fee type, coded	C an..3	R
		VAT Value added tax		
	1131	Code list qualifier	C an..3	N
	3055	Code list responsible agency, coded	C an..3	N
	5152	Duty/tax/fee type	C an..35	N
C533		DUTY/TAX/FEE ACCOUNT DETAIL	C	N
	5289	Duty/tax/fee account identification	M an..6	N
	1131	Code list qualifier	C an..3	N
	3055	Code list responsible agency, coded	C an..3	N
5286		DUTY/TAX/FEE ASSESSMENT BASIS	C an..15	N
C243		DUTY/TAX/FEE DETAIL	C	R
	5279	Duty/tax/fee rate identification	C an..7	N
	1131	Code list qualifier	C an..3	N
	3055	Code list responsible agency, coded	C an..3	N
	5278	Duty/tax/fee rate	C an..17	R
		The actual rate (in per cent) of tax/duty.		
	5273	Duty/tax/fee rate basis identification	C an..12	N
	1131	Code list qualifier	C an..3	N
	3055	Code list responsible agency, coded	C an..3	N
5305		DUTY/TAX/FEE CATEGORY, CODED	C an..3	R
		S Standard rate		
		X Exempt from tax		
3446		PARTY TAX IDENTIFICATION NUMBER	C an..20	N

Segment: **MOA** Monetary Amount
Position: 640
Group: Segment Group 47 Conditional (Required)
Level: 2
Usage: Conditional (Dependent)
Max Use: 2
Purpose: To specify a monetary amount.
Dependency Notes:
Comments:
Notes:

Segment Notes.
 This segment is used to specify the tax amounts due, for the tax rate specified in the TAX segment, covering the whole invoice.

 This segment group can be omitted after special agreement.

 Dependency note:
 DE 6345 to be used if VAT amount has to be expressed in an other currency than the calculation currency of the invoice.

 Example when 7 in TAX group 47 DE 5283 :
 MOA+125:580'
 MOA+176:21.80'

 Example when 9 in TAX group 47 DE 5283 :
 MOA+125:5307:SEK'
 MOA+176:199.47:SEK'

Data Element Summary

<u>Data Element</u>	<u>Component Element</u>	<u>Name</u>	<u>Base Attributes</u>	<u>User Attributes</u>
C516		MONETARY AMOUNT	X	R
	5025	Monetary amount type qualifier	X an..3	R
		125 Taxable amount		
		176 Message total duty/tax/fee amount		
	5004	Monetary amount	C n..18	R
	6345	Currency, coded	C an..3	D
		ISO 4217 three alpha code. Must be used if other currency than the calc. currency.		
	6343	Currency qualifier	C an..3	N
	4405	Status, coded	C an..3	N

Segment: **UNT** Message Trailer
Position: 660
Group:
Level: 0
Usage: Mandatory
Max Use: 1
Purpose: To end and check the completeness of a message.

Dependency Notes:

Comments:

Notes:

Segment Notes.
 This segment is a mandatory UN/EDIFACT segment. It must always be the last segment in the message.

 Example :
 UNT+84+1'

Data Element Summary

<u>Data Element</u>	<u>Component Element</u>	<u>Name</u>	<u>Base Attributes</u>	<u>User Attributes</u>
0074		NUMBER OF SEGMENTS IN A MESSAGE	M n..6	M
0062		MESSAGE REFERENCE NUMBER	M an..14	M