



Message Specification

## **ATLAS Transport Booking Confirmation**

Based on:

**IFTMBC**

Booking confirmation message

**UN D.98B S3**

Version: 1.1  
Variant: PROD  
Issue date: 2014-10-02  
Author: Volvo Information Technology AB

---

---

Revisions

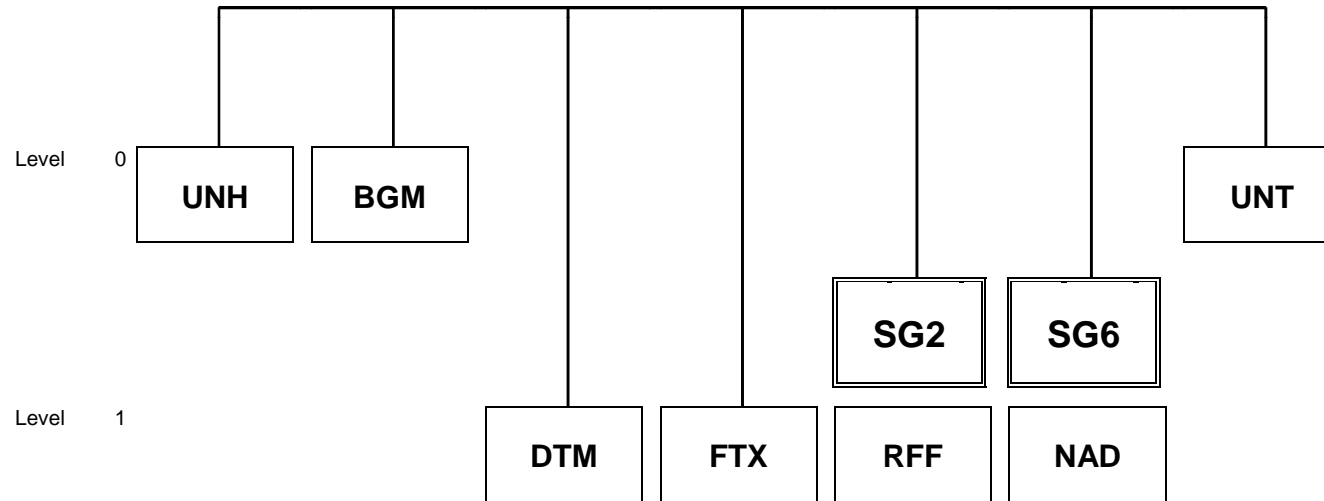
Date	Revision	Remarks
2014-09-01	1.1	1. New qualifier for decline reason in SG4.FTX.4441.
2013-10-04	1.0	First published revision.

---

Counter	No	Tag	St	MaxOcc	Level	Content
0010	1	<b>UNH</b>	M	1	0	Message header
0020	2	<b>BGM</b>	M	1	0	Beginning of message
0050	3	<b>DTM</b>	M	9	1	Date/time/period
0070	4	<b>FTX</b>	D	1	1	Free text
0120		<b>SG2</b>	D	99	1	RFF
0130	5	<b>RFF</b>	M	1	1	Reference
0260		<b>SG6</b>	R	2	1	NAD
0270	6	<b>NAD</b>	M	1	1	Name and address
0860	7	<b>UNT</b>	M	1	0	Message trailer

---

**Branching Diagram of Used Segments/Groups**



# ATLAS TRANSPORT BOOKING CONFIRMATION

## Segment details

**Segment:**      UNH     
 Seq. No.:      1    Level:      0                      **Message header**  
 Status:        M    Max. Occ.:    1  
 Counter:      0010

**Name:**            **Message header**

**Description of segment:**

A service segment starting and uniquely identifying a message. The message type code for the Booking confirmation message is IFTMBC.

UN/EDIFACT			Implementation	
	Name	St Format	St Format	Use / Remarks
UNH				
0062	Message reference number	M an..14	M an..14	
S009	Message identifier	M	M	
0065	Message type identifier	M an..6	M an..6	<b>IFTMBC = Booking confirmation message</b>
0052	Message version number	M an..3	M an..3	<b>D = Draft version/UN/EDIFACT Directory</b>
0054	Message release number	M an..3	M an..3	<b>98B = Release 1998-B</b>
0051	Controlling agency	M an..2	M an..2	<b>UN = UN/ECE/TRADE/WP.4</b>
0057	Association assigned code	C an..6	R an..6	<b>VT0085 = ATLAS R4</b>

**Remark:**

**Example:**

UNH+01234+IFTMBC:D:98B:UN:VT0085'

# ATLAS TRANSPORT BOOKING CONFIRMATION

## Segment details

**Segment:** BGM
 Seq. No.: 2 Level: 0 **Beginning of message**  
 Status: M Max. Occ.: 1  
 Counter: 0020

**Name:** Beginning of message

**Description of segment:**

A segment to indicate the beginning of a message and to transmit identifying number and type of the message.

UN/EDIFACT		Implementation		
	Name	St Format	St Format	Use / Remarks
BGM				
C002	Document/message name	C	R	
1001	Document/message name, coded	C an..3	R an..3	<b>770 = Booking confirmation</b>
C106	Document/message identification	C	M	
1004	Document/message number	C an..35	R an..35	TB id sent in IFTMBF BGM segment element 1004 must be used
1225	Message function, coded	C an..3	N	not used
4343	Response type, coded	C an..3	R an..3	<b>AP = Accepted</b> <b>RE = Rejected</b> <b>AB = Message acknowledgement</b>

**Remark:**

**Example:**

BGM+770+B01234567890++RE'

# ATLAS TRANSPORT BOOKING CONFIRMATION

## Segment details

**Segment:** DTM
 Seq. No.: 3 Level: 1 **Date/time/period**  
 Status: M Max. Occ.: 9  
 Counter: 0050

**Name:** Date/time/period

**Description of segment:**

A segment to indicate a date and time applying to the whole message, e.g., date and time of document issue.

UN/EDIFACT			Implementation	
	Name	St Format	St Format	Use / Remarks
DTM				
C507	Date/time/period	M	M	
2005	Date/time/period qualifier	M an..3	M an..3	<b>182</b> = Issue date
2380	Date/time/period	C an..35	R an..35	
2379	Date/time/period format qualifier	C an..3	R an..3	<b>304</b> = CCYYMMDDHHMMSSZZZ ZZZ to reflect the relationship towards UTC time, where UTC represents +00

**Remark:**

**Example:**

DTM+182:20110614110423?+01:304'

# ATLAS TRANSPORT BOOKING CONFIRMATION

## Segment details

**Segment:** FTX
 Seq. No.: 4 Level: 1 **Free text**  
 Status: D Max. Occ.: 1  
 Counter: 0070

**Name:** Free text

**Description of segment:**

A segment to specify free form or processable supplementary information, such as status of transport, remarks to be printed on the transport documents (where required), consignment remarks, insurance instructions, etc., or any other additional information.

UN/EDIFACT			Implementation	
	Name	St Format	St Format	Use / Remarks
FTX				
4451	Text subject qualifier	M an..3	M an..3	<b>ACD</b> = Reason <i>TB reject reason code.</i>
4453	Text function, coded	C an..3	N	not used
C107	Text reference	C	N	not used
4441	Free text identification	M an..17	R an..17	<b>PD</b> = Past Deadline <i>Supplier didn't make the booking in time</i> <b>IPT</b> = Invalid Pickup Time <b>MI</b> = Missing Information <b>II</b> = Invalid Information <b>GCH</b> = Goods Cannot be Handled <b>UD</b> = Unreasonable Distance <i>To be used only for dynamic planned Transport Bookings</i>
1131	Code list qualifier	C an..3	N	not used
3055	Code list responsible agency, coded	C an..3	R an..3	<b>92</b> = Assigned by buyer or buyer's agent <i>Assigned by Volvo</i>

**Remark:**

Mandatory to specify conditions when BGM 4343 is RE.

**Example:**

FTX+ACD++PD: : 92 '



# ATLAS TRANSPORT BOOKING CONFIRMATION

## Segment details

**Group:** **SG2**    Status: D    Max. Occ.: 99    RFF

**Segment:** **RFF**    Seq. No.: 5    Level: 1    **Reference**  
 Status: M    Max. Occ.: 1  
 Counter: 0130

**Name:**            **Reference**

**Description of segment:**

A segment to express a reference which applies to the entire message such as: the document/message number that is to be updated by this very message (according to data element 1225 Message Function, Coded in segment BGM), booking reference, order number, insurance contract, etc.

UN/EDIFACT		Implementation		
	Name	St Format	St Format	Use / Remarks
RFF				
C506	Reference	M	M	
1153	Reference qualifier	M an..3	M an..3	<b>CN</b> = Carrier's reference number
1154	Reference number	C an..35	R an..35	

**Remark:**

Will be visible in any later IFTMBF sent with corresponding TB id if given.

**Example:**

RFF+CN:REF0123456789'

# ATLAS TRANSPORT BOOKING CONFIRMATION

## Segment details

**Group:** SG6    Status: R    Max. Occ.: 2    NAD

**Segment:** NAD    Seq. No.: 6    Level: 1    **Name and address**  
 Status: M    Max. Occ.: 1  
 Counter: 0270

**Name:**                    **Name and address**

**Description of segment:**

A segment to identify the party's name, address, and function.

UN/EDIFACT		Implementation		
	Name	St Format	St Format	Use / Remarks
NAD				
3035	Party qualifier	M an..3	M an..3	<b>CA</b> = <b>Carrier</b> <b>FW</b> = <b>Freight forwarder</b>
C082	Party identification details	C	D	
3039	Party identification	M an..35	M an..35	Number provided by Volvo.
1131	Code list qualifier	C an..3	N	not used
3055	Code list responsible agency, coded	C an..3	R an..3	<b>92</b> = <b>Assigned by buyer or buyer's agent</b>
C058	Name and address	C	N	not used
3124	Name and address line	M an..35	N	not used
C080	Party name	C	D	
3036	Party name	M an..35	M an..35	

**Remark:**

**Example:**

NAD+CA+123456::92++CARRIER NAME '

# ATLAS TRANSPORT BOOKING CONFIRMATION

## Segment details

Segment:

**UNT**

Seq. No.: 7 Level: 0  
Status: M Max. Occ.: 1  
Counter: 0860

Message trailer

Name: Message trailer

### Description of segment:

A service segment ending a message, giving the total number of segments in the message and the control reference number of the message.

UN/EDIFACT		Implementation		
	Name	St Format	St Format	Use / Remarks
UNT				
0074	Number of segments in the message	M n..6	M n..6	
0062	Message reference number	M an..14	M an..14	

Remark:

Example:

UNT+7+01234 '