



Message Specification

A4D Vehicle Firm Booking

Based on:

IFTMBF

Firm booking message

UN D.98B S3

Version: 1.4
Issue date: 07/01/2020
Author: Volvo Group IT

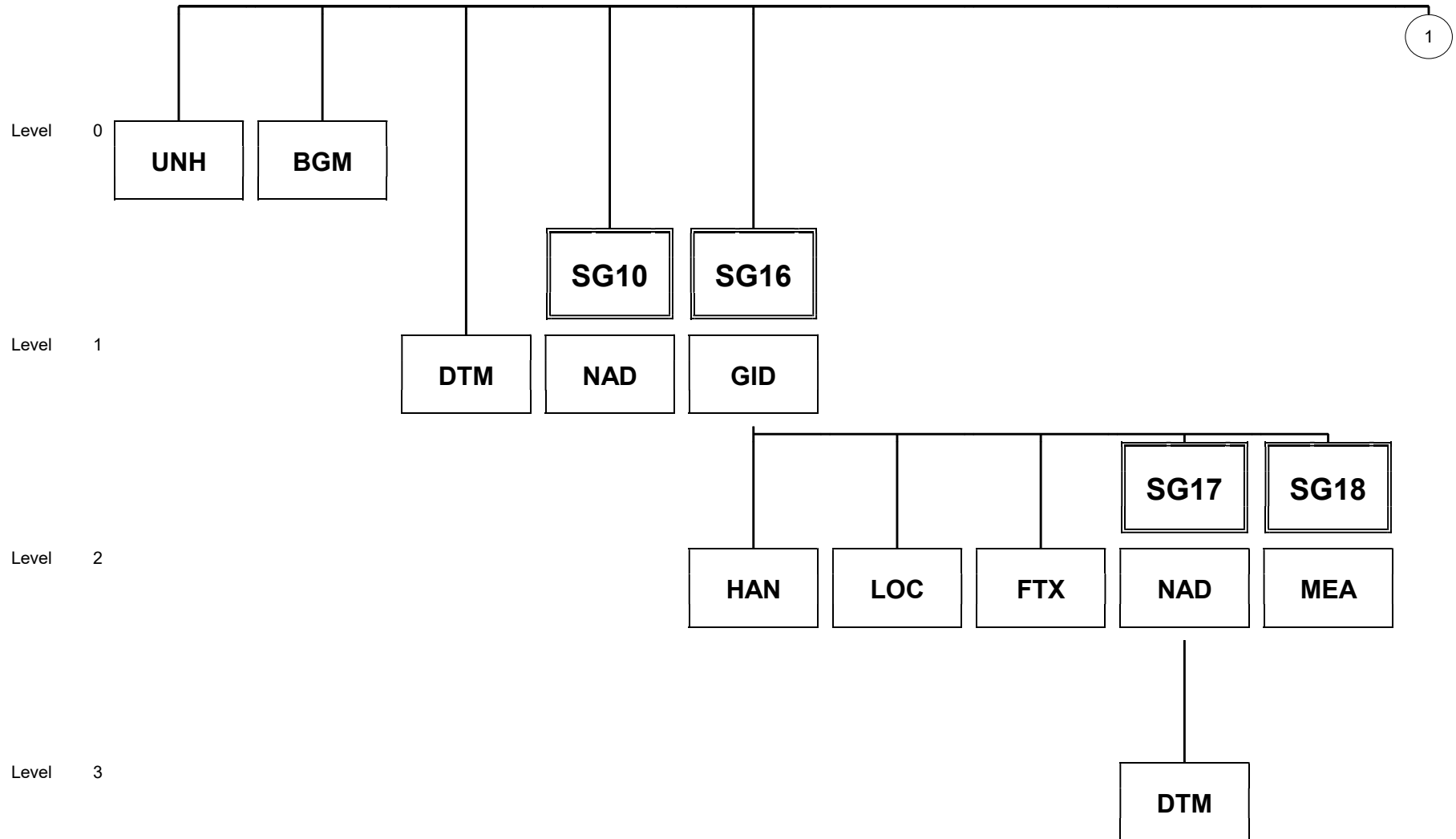
Message Structure

Counter	No	Tag	St	MaxOcc	Level	Content
0010	1	UNH	M	1	0	Message header
0020	2	BGM	M	1	0	Beginning of message
0050	3	DTM	R	1	1	Date/time/period
0450		SG10	R	2	1	NAD
0460	4	NAD	M	1	1	Name and address
0690		SG16	R	999	1	GID-HAN-LOC-FTX-SG17-SG18
0700	5	GID	M	1	1	Goods item details
0710	6	HAN	R	1	2	Handling instructions
0750	7	LOC	R	3	2	Place/location identification
0780	8	FTX	D	1	2	Free text
0800		SG17	R	3	2	NAD-DTM
0810	9	NAD	M	1	2	Name and address
0820	10	DTM	R	4	3	Date/time/period
0840		SG18	D	99	2	MEA
0850	11	MEA	M	1	2	Measurements
1420	12	UNT	M	1	0	Message trailer

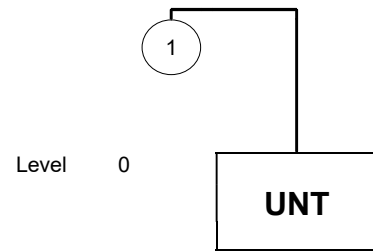
Counter = Counter of segment/group within the standard
 No = Consecutive segment number
 MaxOcc = Maximum occurrence of the segment/group

St = Status
 EDIFACT: M=Mandatory, C=Conditional
 User specific: R=Required, O=Optional, D=Dependent,
 A=Advised, N=Not used

Branching Diagram of Used Segments/Groups



A4D Vehicle Firm Booking



A4D VEHICLE FIRM BOOKING

Segment details

Segment: UNH
 Seq. No.: 1 Level: 0 **Message header**
 Status: M Max. Occ.: 1
 Counter: 0010

Name: Message header

Description of segment:

A service segment starting and uniquely identifying a message. The message type code for the Firm Booking message is IFTMBF.

UN/EDIFACT			Implementation	
	Name	St Format	St Format	Use / Remarks
UNH				
0062	Message reference number	M an..14	M an..14	
S009	Message identifier	M	M	
0065	Message type identifier	M an..6	M an..6	IFTMBF = Firm booking message
0052	Message version number	M an..3	M an..3	D = Draft version/UN/EDIFACT Directory
0054	Message release number	M an..3	M an..3	98B = Release 1998 - B
0051	Controlling agency	M an..2	M an..2	UN = UN/ECE/TRADE/WP.4
0057	Association assigned code	C an..6	R an..6	VT0070 = A4D Firm Booking

Remark:

Example:

UNH+0123+IFTMBF:D:98B:UN:VT0070'

A4D VEHICLE FIRM BOOKING

Segment details

Segment: BGM
 Seq. No.: 2 Level: 0 **Beginning of message**
 Status: M Max. Occ.: 1
 Counter: 0020

Name: Beginning of message

Description of segment:

A segment to indicate the beginning of a message and to transmit identifying number and type of the message.

UN/EDIFACT		Implementation		
	Name	St Format	St Format	Use / Remarks
BGM				
C002	Document/message name	C	R	
1001	Document/message name, coded	C an..3	R an..3	335 = Booking request
C106	Document/message identification	C	R	
1004	Document/message number	C an..35	R an..35	
1225	Message function, coded	C an..3	R an..3	2 = Addition <i>Code 2 is used if there are more than 999 vehicles in the same booking.</i> 4 = Change <i>Code 4 is used when earlier booked vehicle, confirmable, is put on "HOLD" or "RELEASE HOLD". Also used when earlier booked vehicle has got any change of date/time for "available", delivery or "effort" or when arriving to "pickup location".</i> 9 = Original <i>Code '9' is assumed if not used.</i>

Remark:

Example:

BGM+335+0123456+9'

A4D VEHICLE FIRM BOOKING

Segment details

Segment: DTM
 Seq. No.: 3 Level: 1 Date/time/period
 Status: R Max. Occ.: 1
 Counter: 0050

Name: Date/time/period

Description of segment:

A segment to indicate a date and time applying to the whole message, e.g., date and time of document issue.

UN/EDIFACT			Implementation		
	Name	St Format	St Format	Use / Remarks	
DTM					
C507	Date/time/period	M	M		
2005	Date/time/period qualifier	M an..3	M an..3	182	= Issue date
2380	Date/time/period	C an..35	R an..35		
2379	Date/time/period format qualifier	C an..3	R an..3	204	= CCYYMMDDHHMMSS

Remark:

Example:

DTM+182:20191210150300:204'

A4D VEHICLE FIRM BOOKING

Segment details

Group: **SG10** Status: R Max. Occ.: 2 NAD

Segment: **NAD** Seq. No.: 4 Level: 1 **Name and address**
 Status: M Max. Occ.: 1
 Counter: 0460

Name: **Name and address**

Description of segment:

A segment to identify the party's name, address, and function.

UN/EDIFACT		Implementation		
	Name	St Format	St Format	Use / Remarks
NAD				
3035	Party qualifier	M an..3	M an..3	CA = Carrier FW = Freight forwarder
C082	Party identification details	C	R	
3039	Party identification	M an..35	M an..35	PARMA id provided by Volvo.
1131	Code list qualifier	C an..3	N	not used
3055	Code list responsible agency, coded	C an..3	R an..3	RA1 = Assigned by freight forwarder
C058	Name and address	C	R	
3124	Name and address line	M an..35	M an..35	

Remark:

Example:

NAD+FW+01705::RA1+VOLVO GROUP LOGISTICS SERVICES'

A4D VEHICLE FIRM BOOKING

Segment details

Group: SG16 Status: R Max. Occ.: 999 **GID-HAN-LOC-FTX-SG17-SG18**

Segment: GID Seq. No.: 5 Level: 1 **Goods item details**
 Status: M Max. Occ.: 1
 Counter: 0700

Name: **Goods item details**

Description of segment:

A segment to identify a goods item for which transport is undertaken. A goods item can be identified by up to three levels of packaging.

UN/EDIFACT			Implementation	
	Name	St Format	St Format	Use / Remarks
GID				
1496	Goods item number	C n..5	N	not used
C213	Number and type of packages	C	D	
7224	Number of packages	C n..8	N	not used
7065	Type of packages identification	C an..17	R an..17	Vehicle Identification Number.
1131	Code list qualifier	C an..3	R an..3	AKG = Vehicle identification number
3055	Code list responsible agency, coded	C an..3	R an..3	90 = Assigned by manufacturer
C213	Number and type of packages	C	C	
7224	Number of packages	C n..8	N	not used
7065	Type of packages identification	C an..17	R an..17	Chassis Number.
1131	Code list qualifier	C an..3	R an..3	CHA = Chassis number
3055	Code list responsible agency, coded	C an..3	R an..3	90 = Assigned by manufacturer
C213	Number and type of packages	C	C	
7224	Number of packages	C n..8	N	not used
7065	Type of packages identification	C an..17	R an..17	Distribution Order Identification.
1131	Code list qualifier	C an..3	R an..3	IL = Internal order number
3055	Code list responsible agency, coded	C an..3	R an..3	RA1 = Assigned by freight forwarder
C213	Number and type of packages	C	C	
7224	Number of packages	C n..8	N	not used
7065	Type of packages identification	C an..17	R an..17	Business Area Code.
1131	Code list qualifier	C an..3	R an..3	42 = Business function
3055	Code list responsible agency, coded	C an..3	R an..3	RA1 = Assigned by freight forwarder
C213	Number and type of packages	C	C	
7224	Number of packages	C n..8	N	not used
7065	Type of packages identification	C an..17	R an..17	Main Type Code
1131	Code list qualifier	C an..3	R an..3	57 = Product code
3055	Code list responsible agency, coded	C an..3	R an..3	RA1 = Assigned by freight forwarder
7064	Type of packages	C an..35	R an..35	Used to describe Main Type Code.

Remark:

A4D VEHICLE FIRM BOOKING

Segment details

Example:

GID++:VIN:AKG:90+:CHASSINR:CHA:90+:DON:IL:RA1+:BAC:42:RA1+:MTC:57:RA1:DESC_MTC'

A4D VEHICLE FIRM BOOKING

Segment details

Group: **SG16** Status: R Max. Occ.: 999 **GID-HAN-LOC-FTX-SG17-SG18**

Segment: **HAN** Seq. No.: 6 Level: 2 **Handling instructions**
 Status: R Max. Occ.: 1
 Counter: 0710

Name: **Handling instructions**

Description of segment:

A segment to specify handling instructions relating to the goods item.

UN/EDIFACT			Implementation		
	Name	St Format	St Format	Use / Remarks	
HAN					
C524	Handling instructions	C	R		
4079	Handling instructions, coded	C an..3	R an..3	1	= Prioritised
				2	= Prioritised and early delivery allowed
				5	= Distribution "HOLD" Used in combination of BGM.1225=4
				6	= Early delivery allowed
				7	= Normal
1131	Code list qualifier	C an..3	R an..3	63	= Handling action
3055	Code list responsible agency, coded	C an..3	R an..3	RA1	= Assigned by freight forwarder.

Remark:

For "HOLD" qualifier 5 will be used in element 4079.

For "RELEASE HOLD" qualifier 1, 2, 6 or 7 will be used in element 4079.

Example:

HAN+1:63:RA1'

A4D VEHICLE FIRM BOOKING

Segment details

Group: **SG16** Status: R Max. Occ.: 999 **GID-HAN-LOC-FTX-SG17-SG18**

Segment: **LOC** Seq. No.: 7 Level: 2 **Place/location identification**
 Status: R Max. Occ.: 3
 Counter: 0750

Name: **Place/location identification**

Description of segment:

A segment to specify a country associated with a goods item, such as country of origin, or country of destination.

UN/EDIFACT			Implementation		
	Name	St Format	St Format	Use / Remarks	
LOC					
3227	Place/location qualifier	M an..3	M an..3	5	= Place of departure
				8	= Place of destination
				PL1	= Next place of destination
C517	Location identification	C	R		
3225	Place/location identification	C an..25	R an..25	Based on UN/LOCODE	
1131	Code list qualifier	C an..3	R an..3	156	= Location of goods
3055	Code list responsible agency, coded	C an..3	R an..3	RA1	= Assigned by freight forwarder
3224	Place/location	C an..70	D an..70	Parking space/lane if available. Used for place of departure (qualifier "5" in 3227).	

Remark:

Example:

LOC+5+PLGDY0001:156:RA1'

A4D VEHICLE FIRM BOOKING

Segment details

Group: **SG16** Status: R Max. Occ.: 999 GID-HAN-LOC-FTX-SG17-SG18

Segment: **FTX** Seq. No.: 8 Level: 2 **Free text**
 Status: D Max. Occ.: 1
 Counter: 0780

Name: **Free text**

Description of segment:

Used if other service information is needed.

UN/EDIFACT			Implementation	
	Name	St Format	St Format	Use / Remarks
FTX				
4451	Text subject qualifier	M an..3	M an..3	OSI = Other service information
4453	Text function, coded	C an..3	N	not used
C107	Text reference	C	N	not used
4441	Free text identification	M an..17	N	not used
C108	Text literal	C	R	
4440	Free text	M an..70	M an..70	

Remark:

Example:

FTX+OSI+++ADDITIONAL INFORMATION IF AVAILABLE'

A4D VEHICLE FIRM BOOKING

Segment details

Group: SG16 Status: R Max. Occ.: 999 GID-HAN-LOC-FTX-SG17-SG18

Group: SG17 Status: R Max. Occ.: 3 NAD-DTM

Segment: NAD Seq. No.: 9 Level: 2 **Name and address**
 Status: M Max. Occ.: 1
 Counter: 0810

Name: Name and address

Description of segment:

A segment to specify an address of a place of collection or delivery for a goods item.

UN/EDIFACT			Implementation	
	Name	St Format	St Format	Use / Remarks
NAD				
3035	Party qualifier	M an..3	M an..3	CN = Consignee <i>drop off location</i> CZ = Consignor <i>Pick-up location</i>
C082	Party identification details	C	N	not used
3039	Party identification	M an..35	N	not used
C058	Name and address	C	R	
3124	Name and address line	M an..35	M an..35	Location Party Name.
3124	Name and address line	C an..35	C an..35	Used if address is known.
3124	Name and address line	C an..35	C an..35	Used if additional address is known.
C080	Party name	C	N	not used
3036	Party name	M an..35	N	not used
C059	Street	C	N	not used
3042	Street and number/p.o. box	M an..35	N	not used
3164	City name	C an..35	C an..35	Used if postal address is known.
3229	Country sub-entity identification	C an..9	N	not used
3251	Postcode identification	C an..9	C an..9	Used if postal code is known.

Remark:

Example:

NAD+CN++VOLVO POLSKA GDYNIA SALES:UL. RDESTOWA 41+++GDYNIA++81-577'

A4D VEHICLE FIRM BOOKING

Segment details

Group: SG16 Status: R Max. Occ.: 999 GID-HAN-LOC-FTX-SG17-SG18

Group: SG17 Status: R Max. Occ.: 3 NAD-DTM

Segment: DTM Seq. No.: 10 Level: 3 **Date/time/period**
 Status: R Max. Occ.: 4
 Counter: 0820

Name: Date/time/period

Description of segment:

A segment to indicate date and time relating to the place of collection or delivery.

UN/EDIFACT			Implementation	
	Name	St Format	St Format	Use / Remarks
DTM				
C507	Date/time/period	M	M	
2005	Date/time/period qualifier	M an..3	M an..3	2 = Delivery date/time, requested DT1 = Available date/time, actual (Confirmable) DT2 = Available date/time, planned (Not Confirmable) DT3 = Available date/time, planned (Confirmable) DT4 = Effort date/time, requested
2380	Date/time/period	C an..35	R an..35	
2379	Date/time/period format qualifier	C an..3	R an..3	203 = CCYYMMDDHHMM

Remark:

Qualifier 2 and DT4 is used for NAD.3035=CN and DT1, DT2 and DT3 for NAD.3035=CZ.

Example:

DTM+2:201407122359:203'

A4D VEHICLE FIRM BOOKING

Segment details

Group: SG16 Status: R Max. Occ.: 999 GID-HAN-LOC-FTX-SG17-SG18

Group: SG18 Status: D Max. Occ.: 99 MEA

Segment: MEA Seq. No.: 11 Level: 2 **Measurements**
 Status: M Max. Occ.: 1
 Counter: 0850

Name: Measurements

Description of segment:

This segment also include vehicle specification.

UN/EDIFACT			Implementation	
	Name	St Format	St Format	Use / Remarks
MEA 6311	Measurement purpose qualifier	M an..3	M an..3	XXX = Where "XXX" represent different qualifiers given in a separate document from VOLVO. Qualifiers according to special agreement with VOLVO.
C502	Measurement details	C	R	
6313	Property measured, coded	C an..3	N	not used
6321	Measurement significance, coded	C an..3	N	not used
6155	Measurement attribute identification	C an..17	N	not used
6154	Measurement attribute	C an..70	R an..70	Attribute description full
C174	Value/range	C	R	
6411	Measure unit qualifier	M an..3	M an..3	CDE = Code or other value CMT = centimetre KGM = kilogram
6314	Measurement value	C an..18	R an..18	Attribute description truncated

Remark:

Example:

MEA+AAI+:::::4783+CDE:4783'
 MEA+MAT+:::::FH42T+CDE:FH42T'
 MEA+FUT+:::::DIESEL+CDE:DIESEL'

A4D VEHICLE FIRM BOOKING

Segment details

Segment: UNT
 Seq. No.: 12 Level: 0 **Message trailer**
 Status: M Max. Occ.: 1
 Counter: 1420

Name: **Message trailer**

Description of segment:

A service segment ending a message, giving the total number of segments in the message and the control reference number of the message.

UN/EDIFACT		Implementation		
	Name	St Format	St Format	Use / Remarks
UNT				
0074	Number of segments in the message	M n..6	M n..6	
0062	Message reference number	M an..14	M an..14	

Remark:

Example:

UNT+12+0123'