



Message Specification

## **A4D Loading/Discharge Report**

Based on:

**IFTSTA**

International multimodal status report message

**UN D.97B S3**

Version: 2.8  
Issue date: 2015-03-02  
Author: Volvo Information Technology AB

---

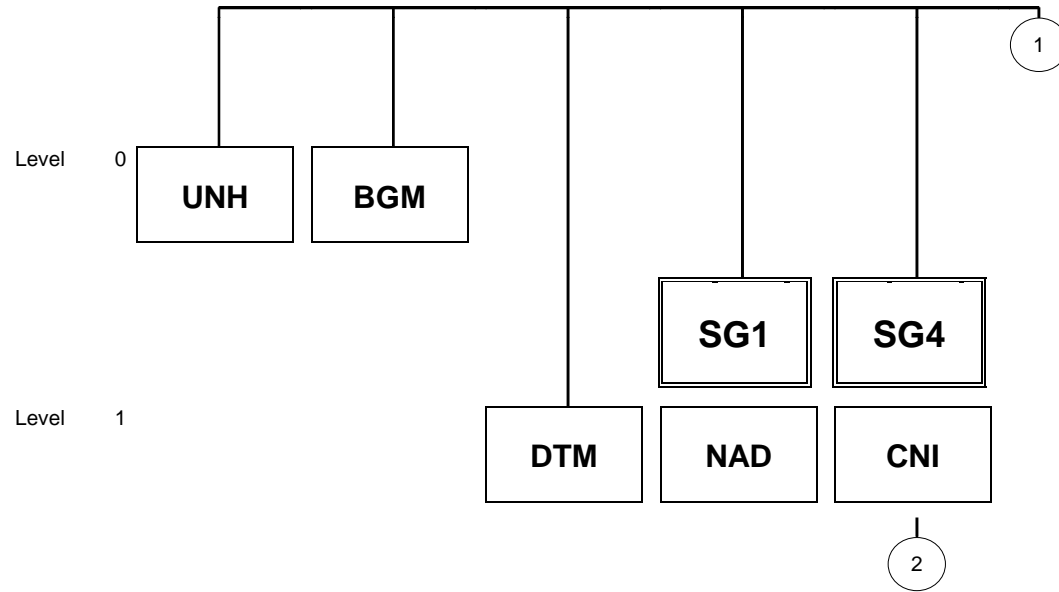
**Message Structure**

Counter	No	Tag	St	MaxOcc	Level	Content
0010	1	<b>UNH</b>	M	1	0	MESSAGE HEADER
0020	2	<b>BGM</b>	M	1	0	BEGINNING OF MESSAGE
0030	3	<b>DTM</b>	R	1	1	DATE/TIME/PERIOD
0050		<b>SG1</b>	R	2	1	NAD
0060	4	<b>NAD</b>	M	1	1	NAME AND ADDRESS
0160		<b>SG4</b>	R	999	1	CNI-SG5
0170	5	<b>CNI</b>	M	1	1	CONSIGNMENT INFORMATION
0200		<b>SG5</b>	M	1	2	STS-RFF-FTX-LOC-SG6-SG9
0210	6	<b>STS</b>	M	1	2	STATUS
0220	7	<b>RFF</b>	R	9	3	REFERENCE
0250	8	<b>FTX</b>	D	16	3	FREE TEXT
0270	9	<b>LOC</b>	D	1	3	PLACE/LOCATION IDENTIFICATION
0290		<b>SG6</b>	M	1	3	TDT-LOC-DTM
0300	10	<b>TDT</b>	M	1	3	DETAILS OF TRANSPORT
0320	11	<b>LOC</b>	R	2	4	PLACE/LOCATION IDENTIFICATION
0330	12	<b>DTM</b>	R	2	4	DATE/TIME/PERIOD
0450		<b>SG9</b>	D	1	3	GID-SG10
0460	13	<b>GID</b>	M	1	3	GOODS ITEM DETAILS
0510		<b>SG10</b>	D	99	4	MEA
0520	14	<b>MEA</b>	M	1	4	MEASUREMENTS
0600	15	<b>UNT</b>	M	1	0	MESSAGE TRAILER

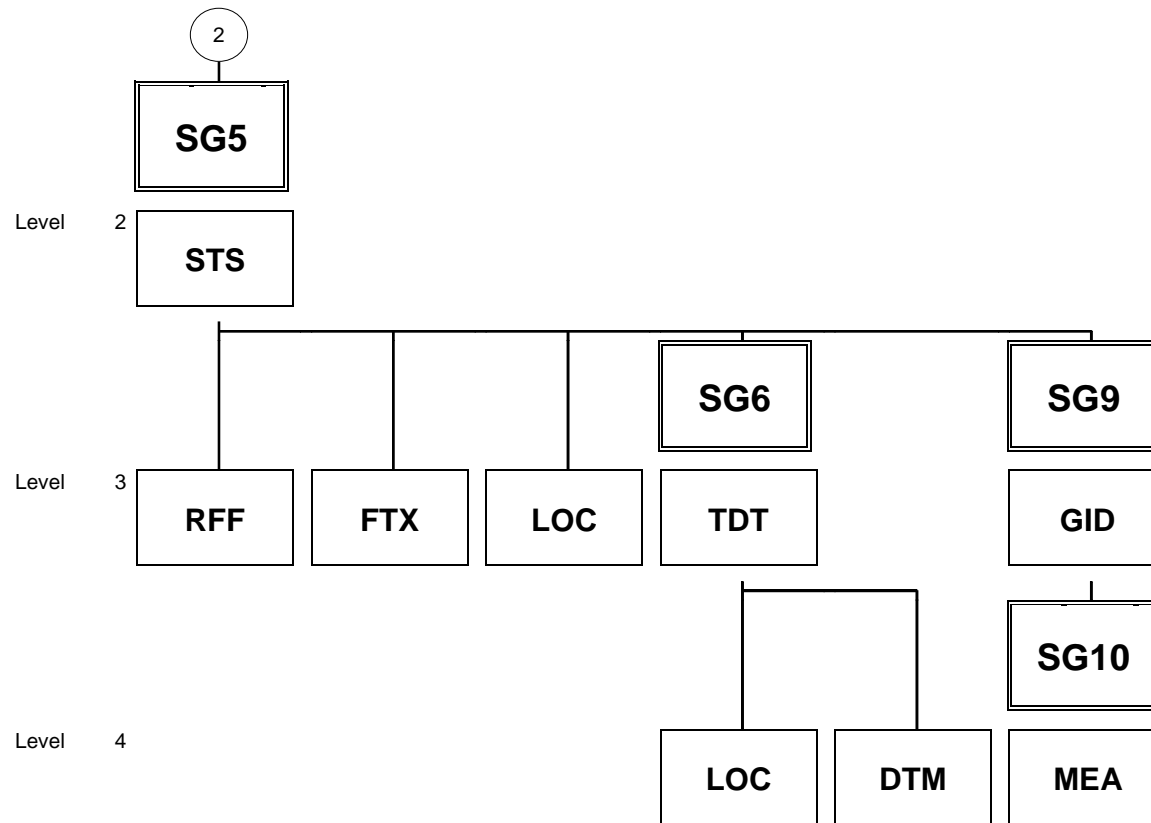
Counter = Counter of segment/group within the standard  
 No = Consecutive segment number  
 MaxOcc = Maximum occurrence of the segment/group

St = Status  
 EDIFACT: M=Mandatory, C=Conditional  
 User specific: R=Required, O=Optional, D=Dependent,  
 A=Advised, N=Not used

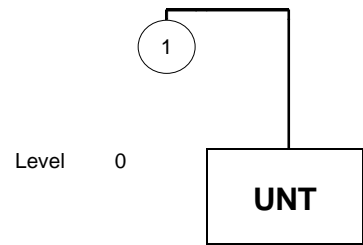
### Branching Diagram of Used Segments/Groups



A4D Loading/Discharge Report



A4D Loading/Discharge Report



# A4D LOADING/DISCHARGE REPORT

## Segment details

**Segment:** UNH
 Seq. No.: 1 Level: 0 **MESSAGE HEADER**  
 Status: M Max. Occ.: 1  
 Counter: 0010

**Name:** MESSAGE HEADER

**Description of segment:**

A service segment starting and uniquely identifying a message. The message type code for the International multimodal status report message is IFTSTA.

UN/EDIFACT			Implementation	
	Name	St Format	St Format	Use / Remarks
UNH				
0062	Message reference number	M an..14	M an..14	
S009	MESSAGE IDENTIFIER	M	M	
0065	Message type identifier	M an..6	M an..6	<b>IFTSTA</b> = International multimodal status report message
0052	Message type version number	M an..3	M an..3	<b>D</b> = Draft version/UN/EDIFACT Directory
0054	Message type release number	M an..3	M an..3	<b>97B</b> = Release 1997 - B
0051	Controlling agency	M an..2	M an..2	<b>UN</b> = UN/ECE/TRADE/WP.4
0057	Association assigned code	C an..6	M an..6	<b>VT0090</b> = A4D Loading/Unloading report
0068	Common access reference	C an..35	N	not used
S010	STATUS OF THE TRANSFER	C	D	
0070	Sequence message transfer number	M n..2	M n..2	
0073	First/last sequence message transfer indication	C a1	D a1	<b>F</b> = Final Used when the final vehicle is loaded or discharged.

**Remark:**

**Example:**

UNH+0123+IFTSTA:D:97B:UN:VT0090++9:F'

# A4D LOADING/DISCHARGE REPORT

## Segment details

**Segment:** **BGM**
 Seq. No.: 2    Level: 0    **BEGINNING OF MESSAGE**  
 Status: M    Max. Occ.: 1  
 Counter: 0020

**Name:**            **BEGINNING OF MESSAGE**

**Description of segment:**

A segment indicating the beginning of a message and identifying the consignment for which status is being reported.

UN/EDIFACT			Implementation	
	Name	St Format	St Format	Use / Remarks
BGM				
C002	DOCUMENT/MESSAGE NAME	C	R	
1001	Document/message name, coded [C]	C an..3	R an..3	<b>44 = Transport status report</b>
C106	DOCUMENT/MESSAGE IDENTIFICATION	C	R	
1004	Document/message number [C]	C an..35	R an..35	

**Remark:**

**Example:**

BGM+44+123456 '

# A4D LOADING/DISCHARGE REPORT

## Segment details

**Segment:** DTM
 Seq. No.: 3 Level: 1 **DATE/TIME/PERIOD**  
 Status: R Max. Occ.: 1  
 Counter: 0030

**Name:** DATE/TIME/PERIOD

**Description of segment:**

A segment indicating the date of the message.

UN/EDIFACT			Implementation		
	Name	St Format	St Format	Use / Remarks	
DTM					
C507	DATE/TIME/PERIOD	M	M		
2005	Date/time/period qualifier [B]	M an..3	M an..3	<b>182</b>	= Issue date
2380	Date/time/period [C]	C an..35	R an..14		
2379	Date/time/period format qualifier [B]	C an..3	R an..3	<b>204</b>	= CCYYMMDDHHMMSS

**Remark:**

**Example:**

DTM+182:20140731235901:204'



# A4D LOADING/DISCHARGE REPORT

## Segment details

**Group:** SG1    Status: R    Max. Occ.: 2    NAD

**Segment:** NAD    Seq. No.: 4    Level: 1    **NAME AND ADDRESS**  
 Status: M    Max. Occ.: 1  
 Counter: 0060

**Name:**            **NAME AND ADDRESS**

**Description of segment:**

A segment identifying a party to the consignment such as shipper or consignee.

UN/EDIFACT		Implementation		
	Name	St Format	St Format	Use / Remarks
NAD				
3035	Party qualifier [C]	M an..3	M an..3	<b>CA</b> = <b>Carrier</b> <b>FW</b> = <b>Freight forwarder</b>
C082	PARTY IDENTIFICATION DETAILS	C	M	
3039	Party identification [C]	M an..35	M an..35	PARMA id provided by Volvo.
1131	Code list qualifier [C]	C an..3	N	not used
3055	Code list responsible agency, coded [C]	C an..3	R an..3	<b>92</b> = <b>Assigned by buyer or buyer's agent</b>
C058	NAME AND ADDRESS	C	R	
3124	Name and address line [B]	M an..35	M an..35	The name of the party.

**Remark:**

**Example:**

NAD+CA+PARMA ID::92+CARRIER NAME'

# A4D LOADING/DISCHARGE REPORT

## Segment details

**Group:** **SG4**    Status: R    Max. Occ.: 999    CNI-SG5

**Segment:** **CNI**    Seq. No.: 5    Level: 1    **CONSIGNMENT INFORMATION**  
 Status: M    Max. Occ.: 1  
 Counter: 0170

**Name:**            **CONSIGNMENT INFORMATION**

**Description of segment:**

A segment to identify a consignment for which status details are given.

UN/EDIFACT		Implementation		
	Name	St Format	St Format	Use / Remarks
CNI				
1490	Consolidation item number [B]	C n..4	R n..4	Use a unique number per vehicle.

**Remark:**

**Example:**

CNI+1 '

# A4D LOADING/DISCHARGE REPORT

## Segment details

**Group:** **SG4** Status: R Max. Occ.: 999 CNI-SG5  
**Group:** **SG5** Status: M Max. Occ.: 1 STS-RFF-FTX-LOC-SG6-SG9  
**Segment:** **STS** Seq. No.: 6 Level: 2 **STATUS**  
Status: M Max. Occ.: 1  
Counter: 0210

**Name:** STATUS

### Description of segment:

A segment specifying the status relating to a consignment (e.g. loaded).

UN/EDIFACT		Implementation		
	Name	St Format	St Format	Use / Remarks
STS				
C601	STATUS TYPE	C	R	
9015	Status type, coded [B]	M an..3	M an..3	<b>1</b> = <b>Transport</b>
C555	STATUS EVENT	C	R	
9011	Status event, coded [B]	M an..3	M an..3	<b>29</b> = <b>Discharged</b> (Arrival) <b>48</b> = <b>Loaded</b> (Departure)

### Remark:

Combination of qualifier 29 and 48 is not allowed in same message, needs to be reported separately.

### Example:

# A4D LOADING/DISCHARGE REPORT

## Segment details

**Group:** **SG4**      Status: R      Max. Occ.: 999      CNI-SG5

**Group:** **SG5**      Status: M      Max. Occ.: 1      STS-RFF-FTX-LOC-SG6-SG9

**Segment:** **RFF**      Seq. No.: 7      Level: 3      **REFERENCE**  
 Status: R      Max. Occ.: 9  
 Counter: 0220

**Name:**            **REFERENCE**

**Description of segment:**

A segment identifying a reference relating to the status (e.g House Bill of Lading number).

UN/EDIFACT		Implementation		
UN/EDIFACT	Name	St Format	St Format	Use / Remarks
RFF				
C506	REFERENCE	M	M	
1153	Reference qualifier [C]	M an..3	M an..3	<b>AKG = Vehicle Identification Number (VIN)</b>
1154	Reference number [C]	C an..35	R an..35	

**Remark:**

**Example:**

RFF+AKG:VIN0123456789'



# A4D LOADING/DISCHARGE REPORT

## Segment details

**Group:**      **SG4**      Status: R      Max. Occ.: 999      CNI-SG5  
**Group:**      **SG5**      Status: M      Max. Occ.: 1      STS-RFF-FTX-LOC-SG6-SG9  
**Segment:**    **LOC**      Seq. No.: 9      Level: 3      **PLACE/LOCATION IDENTIFICATION**  
                      Status: D      Max. Occ.: 1  
                      Counter: 0270

**Name:**      **PLACE/LOCATION IDENTIFICATION**

**Description of segment:**

Used if parking space/lane is known.

UN/EDIFACT			Implementation	
	Name	St Format	St Format	Use / Remarks
LOC				
3227	Place/location qualifier [C]	M an..3	M an..3	<b>14</b> = <b>Location of goods</b>
C517	LOCATION IDENTIFICATION	C	R	
3225	Place/location identification [C]	C an..25	R an..25	
1131	Code list qualifier [C]	C an..3	N	not used
3055	Code list responsible agency, coded [C]	C an..3	R an..3	<b>87</b> = <b>Assigned by carrier</b>

**Remark:**

To be used in IFTSTA Prenotification if the exact pick up location is known by A4D. Should also be used in the IFTSTA Discharge when the exact unloading position is known .e.g. parking space or lane in a port.

**Example:**

LOC+14+LOCATION: : 87 '

# A4D LOADING/DISCHARGE REPORT

## Segment details

**Group:** SG4 Status: R Max. Occ.: 999 CNI-SG5  
**Group:** SG5 Status: M Max. Occ.: 1 STS-RFF-FTX-LOC-SG6-SG9  
**Group:** SG6 Status: M Max. Occ.: 1 TDT-LOC-DTM  
**Segment:** TDT Seq. No.: 10 Level: 3 **DETAILS OF TRANSPORT**  
 Status: M Max. Occ.: 1  
 Counter: 0300

**Name:** DETAILS OF TRANSPORT

**Description of segment:**

A segment identifying conveyance related to the status or event such as flight, vessel/voyage.

UN/EDIFACT		Implementation		
	Name	St Format	St Format	Use / Remarks
TDT				
8051	Transport stage qualifier [B]	M an..3	M an..3	<b>10</b> = Pre-carriage transport <b>20</b> = Main-carriage transport <b>30</b> = On-carriage transport
8028	Conveyance reference number [B]	C an..17	R an..10	License plate identification, transport id or voyage number.
C220	MODE OF TRANSPORT	C	R	
8067	Mode of transport, coded [B]	C an..3	R an..3	<b>10</b> = Maritime transport <b>11</b> = Ferry transport <b>20</b> = Rail transport <b>30</b> = Road transport
C228	TRANSPORT MEANS	C	N	not used
8179	Type of means of transport identification [C]	C an..8	N	not used
C040	CARRIER	C	N	not used
3127	Carrier identification [B]	C an..17	N	not used
8101	Transit direction, coded [B]	C an..3	N	not used
C401	EXCESS TRANSPORTATION INFORMATION	C	N	not used
8457	Excess transportation reason, coded [B]	M an..3	N	not used
C222	TRANSPORT IDENTIFICATION	C	D	
8213	Id. of means of transport identification [B]	C an..9	N	not used
1131	Code list qualifier [C]	C an..3	N	not used
3055	Code list responsible agency, coded [C]	C an..3	N	not used
8212	Id. of the means of transport [B]	C an..35	R an..35	Name of the vessel.
8453	Nationality of means of transport, coded [B]	C an..3	R an..3	ISO Code 2.

**Remark:**

If an IFTMBC has been sent prior IFTSTA, the LOT ID in the IFTSTA departure must contain the same chassis (VIN numbers) If there is a change on chassis in the LOTs a new updated IFTMBC needs to be sent out in order to get the LOTs correct. Conveyance Reference number is used to specify the Transport ID and defined by the carrier. The number should be unique. The Transport ID can be maximum 10 digit long. Transport ID may be the same as LOT ID as long as the LOT ID is max 10 digits. Transport ID

# A4D LOADING/DISCHARGE REPORT

## Segment details

may also be the license plate or Voyage number if applicable.

**Example:**

TDT+10+ABC123+10+++++:::VESSEL NAME:SE'



# A4D LOADING/DISCHARGE REPORT

## Segment details

**Group:** **SG4** Status: R Max. Occ.: 999 CNI-SG5

**Group:** **SG5** Status: M Max. Occ.: 1 STS-RFF-FTX-LOC-SG6-SG9

**Group:** **SG6** Status: M Max. Occ.: 1 TDT-LOC-DTM

**Segment:** **LOC** Seq. No.: 11 Level: 4 **PLACE/LOCATION IDENTIFICATION**  
 Status: R Max. Occ.: 2  
 Counter: 0320

**Name:** PLACE/LOCATION IDENTIFICATION

**Description of segment:**

A segment indicating locations related to conveyance such as flight origin/destination.

UN/EDIFACT		Implementation		
	Name	St Format	St Format	Use / Remarks
LOC				
3227	Place/location qualifier [C]	M an..3	M an..3	<b>5</b> = Place of departure <b>8</b> = Place of destination
C517	LOCATION IDENTIFICATION	C	R	
3225	Place/location identification [C]	C an..25	R an..25	Code list provided by Volvo.
1131	Code list qualifier [C]	C an..3	N	not used
3055	Code list responsible agency, coded [C]	C an..3	R an..3	<b>92</b> = Assigned by buyer or buyer's agent

**Remark:**

Must report one 1 IFTSTA per LOC5/LOC8 combination and/or Conveyance Reference number (e.g. A4D Transport ID, Lot ID, license plate or voyage number).  
 It is a pre requisite that all chassis with same LOC5/LOC8 combination and Conveyance Reference number shall be sent in the same IFTSTA Departure file.

**Example:**

LOC+5+SEGOT0110::92'

# A4D LOADING/DISCHARGE REPORT

## Segment details

**Group:** **SG4** Status: R Max. Occ.: 999 CNI-SG5

**Group:** **SG5** Status: M Max. Occ.: 1 STS-RFF-FTX-LOC-SG6-SG9

**Group:** **SG6** Status: M Max. Occ.: 1 TDT-LOC-DTM

**Segment:** **DTM** Seq. No.: 12 Level: 4 **DATE/TIME/PERIOD**  
Status: R Max. Occ.: 2  
Counter: 0330

**Name:** **DATE/TIME/PERIOD**

### Description of segment:

A segment indicating dates related to conveyance such as destination and/or arrival date/time.

UN/EDIFACT		Implementation		
	Name	St Format	St Format	Use / Remarks
DTM				
C507	DATE/TIME/PERIOD	M	M	
2005	Date/time/period qualifier [B]	M an..3	M an..3	<b>132</b> = Arrival date/time, estimated <b>133</b> = Departure date/time, estimated <b>178</b> = Arrival date/time, actual <b>186</b> = Departure date/time, actual
2380	Date/time/period [C]	C an..35	R an..35	
2379	Date/time/period format qualifier [B]	C an..3	R an..3	<b>203</b> = CCYYMMDDHHMM

### Remark:

For IFSTA Loaded, valid combination for element 2005 is 186 and 132 or just 186.

For IFSTA Discharge, valid combination for element 2005 is 186 and 178, 178 and 132 or just 178.

### Example:

DTM+132:201407312359:203'

# A4D LOADING/DISCHARGE REPORT

## Segment details

**Group:** **SG4** Status: R Max. Occ.: 999 CNI-SG5

**Group:** **SG5** Status: M Max. Occ.: 1 STS-RFF-FTX-LOC-SG6-SG9

**Group:** **SG9** Status: D Max. Occ.: 1 GID-SG10

**Segment:** **GID** Seq. No.: 13 Level: 3 **GOODS ITEM DETAILS**  
 Status: M Max. Occ.: 1  
 Counter: 0460

**Name:** **GOODS ITEM DETAILS**

**Description of segment:**

A segment identifying a goods item.

UN/EDIFACT		Implementation		
	Name	St Format	St Format	Use / Remarks
GID 1496	Goods item number [B]	C n..5	R n..5	

**Remark:**

**Example:**

GID+1'

# A4D LOADING/DISCHARGE REPORT

## Segment details

**Group:** SG4 Status: R Max. Occ.: 999 CNI-SG5  
**Group:** SG5 Status: M Max. Occ.: 1 STS-RFF-FTX-LOC-SG6-SG9  
**Group:** SG9 Status: D Max. Occ.: 1 GID-SG10  
**Group:** SG10 Status: D Max. Occ.: 99 MEA  
**Segment:** MEA Seq. No.: 14 Level: 4 **MEASUREMENTS**  
 Status: M Max. Occ.: 1  
 Counter: 0520

**Name:** MEASUREMENTS

**Description of segment:**

A segment specifying measurements, other than dimension, of a goods item.

UN/EDIFACT		Implementation		
	Name	St Format	St Format	Use / Remarks
MEA				
6311	Measurement purpose qualifier [B]	M an..3	M an..3	<b>XXX</b> = Where "XXX" represent different qualifiers given in a separate document from VOLVO. Qualifiers according to special agreement with VOLVO.
C502	MEASUREMENT DETAILS	C	D	
6313	Property measured, coded [B]	C an..3	N	not used
6321	Measurement significance, coded [B]	C an..3	N	not used
6155	Measurement attribute identification [B]	C an..17	N	not used
6154	Measurement attribute [B]	C an..70	D an..70	Attribute description.
C174	VALUE/RANGE	C	R	
6411	Measure unit qualifier [C]	M an..3	M an..3	<b>CDE</b> = Code or other value defined by Volvo. <b>CMT</b> = Centimetre <b>KGM</b> = Kilogram <b>MTQ</b> = Cubic metre
6314	Measurement value [C]	C an..18	R an..18	Short attribute description.

**Remark:**

**Example:**

MEA+AAI++KGM:8500'  
 MEA+AAB++CDE:YELLOW'

# A4D LOADING/DISCHARGE REPORT

## Segment details

**Segment:**      UNT     
 Seq. No.:      15    Level:      0                      **MESSAGE TRAILER**  
 Status:        M    Max. Occ.:    1  
 Counter:      0600

**Name:**            **MESSAGE TRAILER**

**Description of segment:**

A service segment ending a message, giving the total number of segments in the message and the control reference number of the message.

UN/EDIFACT		Implementation		
	Name	St Format	St Format	Use / Remarks
UNT				
0074	Number of segments in a message	M n..6	M n..6	
0062	Message reference number	M an..14	M an..14	

**Remark:**

**Example:**

UNT+15+0123 '