



Message Specification

VOLVO GLOBAL 824 4050

Based on:

824

Application Advice

X12 004050

Version: 1
Variant: 0
Issue date: 23/12/2019
Author: Volvo Group IT

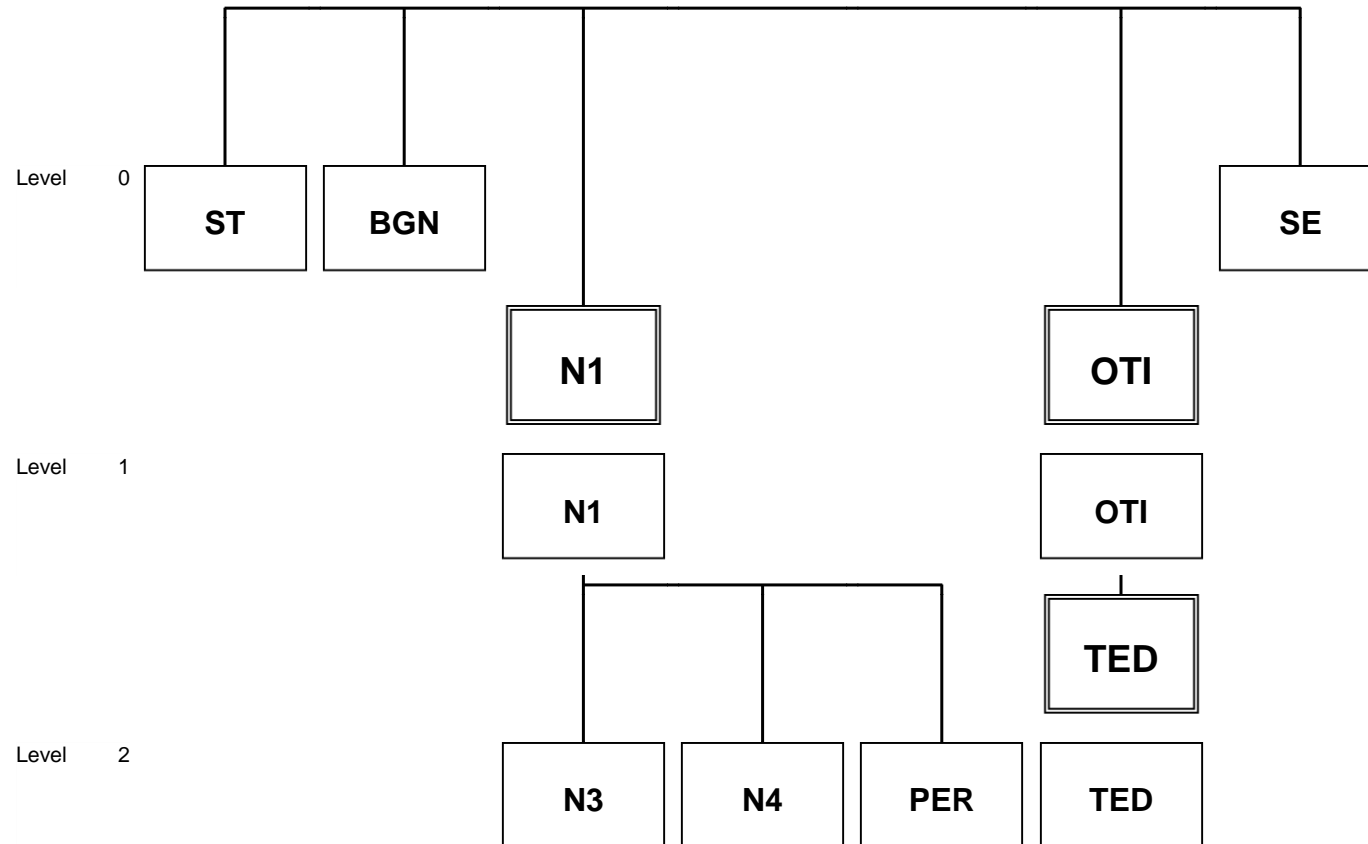
Message Structure

Counter	No	Tag	St	MaxOcc	Level	Content
0100	1	ST	M	1	0	Transaction Set Header
0200	2	BGN	M	1	0	Beginning Segment
0300		N1	O	1	1	Buying Party
0300	3	N1	M	1	1	Party Identification
0500	4	N3	O	1	2	Party Location
0600	5	N4	O	1	2	Geographic Location
0800	6	PER	O	1	2	Administrative Communications Contact
0300		N1	O	1	1	Selling Party
0300	7	N1	M	1	1	Party Identification
0500	8	N3	O	1	2	Party Location
0600	9	N4	O	1	2	Geographic Location
0800	10	PER	O	1	2	Administrative Communications Contact
0300		N1	O	1	1	Ship from
0300	11	N1	M	1	1	Party Identification
0500	12	N3	O	1	2	Party Location
0600	13	N4	O	1	2	Geographic Location
0800	14	PER	O	1	2	Administrative Communications Contact
0300		N1	O	1	1	Ship To
0300	15	N1	M	1	1	Party Identification
0500	16	N3	O	1	2	Party Location
0600	17	N4	O	1	2	Geographic Location
0800	18	PER	O	1	2	Administrative Communications Contact
0100		OTI	M	1	1	OTI-TED
0100	19	OTI	M	1	1	Original Transaction Identification
0700		TED	R	10	2	TED
0700	20	TED	M	1	2	Technical Error Description
0900	21	SE	M	1	0	Transaction Set Trailer

Counter = Counter of segment/group within the standard
 No = Consecutive segment number
 MaxOcc = Maximum occurrence of the segment/group

St = Status
 X12: M=Mandatory, C=Conditional, O=Optional
 User specific: R=Required, O=Optional, D=Dependent,
 N=Not used

Branching Diagram of Used Segments/Groups



Segments

Counter	No	Tag	St	MaxOcc	Level	Name
0100	1	ST	M	1	0	Transaction Set Header

Standard			Implementation	
Ref.	Id	Name	St Format	Usage / Remark
ST01	143	Transaction Set Identifier Code	M ID 3/3	824 Application Advice
ST02	329	Transaction Set Control Number	M AN 4/9	

Remark:

Example:

ST*824*0001

No = Consecutive segment number
 MaxOcc = Maximum occurrence of the segment/group
 Counter = Counter of segment/group within the standard

St=Status
 X12: M=Mandatory, C=Conditional, O=Optional
 User specific: R=Required, O=Optional, D=Dependent,
 N=Not used

Counter	No	Tag	St	MaxOcc	Level	Name
0200	2	BGN	M	1	0	Beginning Segment

Standard			Implementation	
Ref.	Id	Name	St Format	Usage / Remark
BGN01	353	Transaction Set Purpose Code	M ID 2/2	00 Original
BGN02	127	Reference Identification	M AN 1/50	Unique identifier of a document. Synonym: document number.
BGN03	373	Date	M DT 8/8	
BGN04	337	Time	C TM 4/8	

Remark:

Example:

BGN*00*219840593*20160801*1130

No = Consecutive segment number
 MaxOcc = Maximum occurrence of the segment/group
 Counter = Counter of segment/group within the standard

St=Status
 X12: M=Mandatory, C=Conditional, O=Optional
 User specific: R=Required, O=Optional, D=Dependent,
 N=Not used

Counter	No	Tag	St	MaxOcc	Level	Name
0300		N1	O	1	1	Buying Party
0300	3	N1	M	1	1	Party Identification

Standard			Implementation	
Ref.	Id	Name	St Format	Usage / Remark
N1 01	98	Entity Identifier Code	M ID 2/3	BY Buying Party (Purchaser)
N1 02	93	Name	C AN 1/60	Free-form name
N1 03	66	Identification Code Qualifier	R ID 1/2	92 Assigned by Buyer or Buyer's Agent
N1 04	67	Identification Code	R AN 2/80	

Remark:**Example:**

N1*BY*VOLVO TRUCKS NA INC*92*24814

No = Consecutive segment number
 MaxOcc = Maximum occurrence of the segment/group
 Counter = Counter of segment/group within the standard

St=Status
 X12: M=Mandatory, C=Conditional, O=Optional
 User specific: R=Required, O=Optional, D=Dependent,
 N=Not used

Counter	No	Tag	St	MaxOcc	Level	Name
0300		N1	O	1	1	Buying Party
0500	4	N3	O	1	2	Party Location

Standard			Implementation	
Ref.	Id	Name	St Format	Usage / Remark
N3 01	166	Address Information	M AN 1/55	

Remark:

Example:

N3*7900 NATIONAL SERVICE RD

No = Consecutive segment number
 MaxOcc = Maximum occurrence of the segment/group
 Counter = Counter of segment/group within the standard

St=Status
 X12: M=Mandatory, C=Conditional, O=Optional
 User specific: R=Required, O=Optional, D=Dependent,
 N=Not used

Counter	No	Tag	St	MaxOcc	Level	Name
0300		N1	O	1	1	Buying Party
0600	5	N4	O	1	2	Geographic Location

Standard			Implementation	
Ref.	Id	Name	St Format	Usage / Remark
N4 01	19	City Name	O AN 2/30	
N4 02	156	State or Province Code	C ID 2/2	
N4 03	116	Postal Code	O ID 3/15	
N4 04	26	Country Code	C ID 2/3	

Remark:**Example:**

N4*GREENSBORO*NC*27409*US

No = Consecutive segment number
 MaxOcc = Maximum occurrence of the segment/group
 Counter = Counter of segment/group within the standard

St=Status
 X12: M=Mandatory, C=Conditional, O=Optional
 User specific: R=Required, O=Optional, D=Dependent,
 N=Not used

Counter	No	Tag	St	MaxOcc	Level	Name
0300		N1	O	1	1	Buying Party
0800	6	PER	O	1	2	Administrative Communications Contact

Standard			Implementation	
Ref.	Id	Name	St Format	Usage / Remark
PER 01	366	Contact Function Code	M ID 2/2	BD Buyer Name or Department
PER 02	93	Name	O AN 1/60	Free-form name
PER 03	365	Communication Number Qualifier	C ID 2/2	EM Electronic Mail
PER 04	364	Communication Number	C AN 1/256	
PER 05	365	Communication Number Qualifier	C ID 2/2	TE Telephone
PER 06	364	Communication Number	C AN 1/256	

Remark:**Example:**

PER*BD*BOB SNYDER*EM*BOB.SNYDER@VOLVO.COM

No = Consecutive segment number
 MaxOcc = Maximum occurrence of the segment/group
 Counter = Counter of segment/group within the standard

St=Status
 X12: M=Mandatory, C=Conditional, O=Optional
 User specific: R=Required, O=Optional, D=Dependent,
 N=Not used

Counter	No	Tag	St	MaxOcc	Level	Name
0300		N1	O	1	1	Selling Party
0300	7	N1	M	1	1	Party Identification

Standard			Implementation	
Ref.	Id	Name	St Format	Usage / Remark
N1 01	98	Entity Identifier Code	M ID 2/3	SE Selling Party
N1 02	93	Name	C AN 1/60	Free-form name
N1 03	66	Identification Code Qualifier	C ID 1/2	92 Assigned by Buyer or Buyer's Agent
N1 04	67	Identification Code	C AN 2/80	

Remark:**Example:**

N1*SE*PANA-PACIFIC CORP*92*51144

No = Consecutive segment number
 MaxOcc = Maximum occurrence of the segment/group
 Counter = Counter of segment/group within the standard

St=Status
 X12: M=Mandatory, C=Conditional, O=Optional
 User specific: R=Required, O=Optional, D=Dependent,
 N=Not used

Counter	No	Tag	St	MaxOcc	Level	Name
0300		N1	O	1	1	Selling Party
0500	8	N3	O	1	2	Party Location

Standard			Implementation	
Ref.	Id	Name	St Format	Usage / Remark
N3 01	166	Address Information	M AN 1/55	

Remark:

Example:

N3*7900 NATIONAL SERVICE RD

No = Consecutive segment number
 MaxOcc = Maximum occurrence of the segment/group
 Counter = Counter of segment/group within the standard

St=Status
 X12: M=Mandatory, C=Conditional, O=Optional
 User specific: R=Required, O=Optional, D=Dependent,
 N=Not used

Counter	No	Tag	St	MaxOcc	Level	Name
0300		N1	O	1	1	Selling Party
0600	9	N4	O	1	2	Geographic Location

Standard			Implementation	
Ref.	Id	Name	St Format	Usage / Remark
N4 01	19	City Name	O AN 2/30	
N4 02	156	State or Province Code	C ID 2/2	
N4 03	116	Postal Code	O ID 3/15	
N4 04	26	Country Code	C ID 2/3	

Remark:**Example:**

N4*GREENSBORO*NC*27409*US

No = Consecutive segment number
 MaxOcc = Maximum occurrence of the segment/group
 Counter = Counter of segment/group within the standard

St=Status
 X12: M=Mandatory, C=Conditional, O=Optional
 User specific: R=Required, O=Optional, D=Dependent,
 N=Not used

Counter	No	Tag	St	MaxOcc	Level	Name
0300		N1	O	1	1	Selling Party
0800	10	PER	O	1	2	Administrative Communications Contact

Standard			Implementation	
Ref.	Id	Name	St Format	Usage / Remark
PER 01	366	Contact Function Code	M ID 2/2	SR Sales Representative or Department
PER 02	93	Name	O AN 1/60	Free-form name
PER 03	365	Communication Number Qualifier	C ID 2/2	EM Electronic Mail
PER 04	364	Communication Number	C AN 1/256	
PER 05	365	Communication Number Qualifier	C ID 2/2	TE Telephone
PER 06	364	Communication Number	C AN 1/256	

Remark:**Example:**

PER*SR*SUPPLIER NAME*EM*NAME@COMPANY.COM

No = Consecutive segment number
 MaxOcc = Maximum occurrence of the segment/group
 Counter = Counter of segment/group within the standard

St=Status
 X12: M=Mandatory, C=Conditional, O=Optional
 User specific: R=Required, O=Optional, D=Dependent,
 N=Not used

Counter	No	Tag	St	MaxOcc	Level	Name
0300		N1	O	1	1	Ship from
0300	11	N1	M	1	1	Party Identification

Standard			Implementation	
Ref.	Id	Name	St Format	Usage / Remark
N1 01	98	Entity Identifier Code	M ID 2/3	SF Ship From
N1 02	93	Name	C AN 1/60	Free-form name
N1 03	66	Identification Code Qualifier	C ID 1/2	92 Assigned by Buyer or Buyer's Agent
N1 04	67	Identification Code	C AN 2/80	

Remark:**Example:**

N1*Sf*SHIP FROM CORP*92*51122

No = Consecutive segment number
 MaxOcc = Maximum occurrence of the segment/group
 Counter = Counter of segment/group within the standard

St=Status
 X12: M=Mandatory, C=Conditional, O=Optional
 User specific: R=Required, O=Optional, D=Dependent,
 N=Not used

Counter	No	Tag	St	MaxOcc	Level	Name
0300		N1	O	1	1	Ship from
0500	12	N3	O	1	2	Party Location

Standard			Implementation	
Ref.	Id	Name	St Format	Usage / Remark
N3 01	166	Address Information	M AN 1/55	

Remark:

Example:

N3*SHIP FROM ADDRESS

No = Consecutive segment number
 MaxOcc = Maximum occurrence of the segment/group
 Counter = Counter of segment/group within the standard

St=Status
 X12: M=Mandatory, C=Conditional, O=Optional
 User specific: R=Required, O=Optional, D=Dependent,
 N=Not used

Counter	No	Tag	St	MaxOcc	Level	Name
0300		N1	O	1	1	Ship from
0600	13	N4	O	1	2	Geographic Location

Standard			Implementation	
Ref.	Id	Name	St Format	Usage / Remark
N4 01	19	City Name	O AN 2/30	
N4 02	156	State or Province Code	C ID 2/2	
N4 03	116	Postal Code	O ID 3/15	
N4 04	26	Country Code	C ID 2/3	

Remark:**Example:**

N4*GREENSBORO*NC*27410*US

No = Consecutive segment number
 MaxOcc = Maximum occurrence of the segment/group
 Counter = Counter of segment/group within the standard

St=Status
 X12: M=Mandatory, C=Conditional, O=Optional
 User specific: R=Required, O=Optional, D=Dependent,
 N=Not used

Counter	No	Tag	St	MaxOcc	Level	Name
0300		N1	O	1	1	Ship from
0800	14	PER	O	1	2	Administrative Communications Contact

Standard			Implementation	
Ref.	Id	Name	St Format	Usage / Remark
PER 01	366	Contact Function Code	M ID 2/2	SR Sales Representative or Department
PER 02	93	Name	O AN 1/60	Free-form name
PER 03	365	Communication Number Qualifier	C ID 2/2	EM Electronic Mail
PER 04	364	Communication Number	C AN 1/256	
PER 05	365	Communication Number Qualifier	C ID 2/2	TE Telephone
PER 06	364	Communication Number	C AN 1/256	

Remark:**Example:**

PER*SR*NAME*EM*NAME@COMPANY.COM

No = Consecutive segment number
 MaxOcc = Maximum occurrence of the segment/group
 Counter = Counter of segment/group within the standard

St=Status
 X12: M=Mandatory, C=Conditional, O=Optional
 User specific: R=Required, O=Optional, D=Dependent,
 N=Not used

Counter	No	Tag	St	MaxOcc	Level	Name
0300		N1	O	1	1	Ship To
0300	15	N1	M	1	1	Party Identification

Standard			Implementation	
Ref.	Id	Name	St Format	Usage / Remark
N1 01	98	Entity Identifier Code	M ID 2/3	ST Ship To
N1 02	93	Name	C AN 1/60	Free-form name
N1 03	66	Identification Code Qualifier	C ID 1/2	92 Assigned by Buyer or Buyer's Agent
N1 04	67	Identification Code	C AN 2/80	

Remark:**Example:**

N1*ST*WORLDWIDE EQUIPMENT OF TN, INC*92*5372D

No = Consecutive segment number
 MaxOcc = Maximum occurrence of the segment/group
 Counter = Counter of segment/group within the standard

St=Status
 X12: M=Mandatory, C=Conditional, O=Optional
 User specific: R=Required, O=Optional, D=Dependent,
 N=Not used

Counter	No	Tag	St	MaxOcc	Level	Name
0300		N1	O	1	1	Ship To
0500	16	N3	O	1	2	Party Location

Standard			Implementation	
Ref.	Id	Name	St Format	Usage / Remark
N3 01	166	Address Information	M AN 1/55	

Remark:

Example:

N3*2017 EAST 23RD STREET

No = Consecutive segment number
 MaxOcc = Maximum occurrence of the segment/group
 Counter = Counter of segment/group within the standard

St=Status
 X12: M=Mandatory, C=Conditional, O=Optional
 User specific: R=Required, O=Optional, D=Dependent,
 N=Not used

Counter	No	Tag	St	MaxOcc	Level	Name
0300		N1	O	1	1	Ship To
0600	17	N4	O	1	2	Geographic Location

Standard			Implementation	
Ref.	Id	Name	St Format	Usage / Remark
N4 01	19	City Name	O AN 2/30	
N4 02	156	State or Province Code	C ID 2/2	
N4 03	116	Postal Code	O ID 3/15	
N4 04	26	Country Code	C ID 2/3	

Remark:**Example:**

N4*CHATTANOOGA*TN*37404*US

No = Consecutive segment number
 MaxOcc = Maximum occurrence of the segment/group
 Counter = Counter of segment/group within the standard

St=Status
 X12: M=Mandatory, C=Conditional, O=Optional
 User specific: R=Required, O=Optional, D=Dependent,
 N=Not used

Counter	No	Tag	St	MaxOcc	Level	Name
0300		N1	O	1	1	Ship To
0800	18	PER	O	1	2	Administrative Communications Contact

Standard			Implementation	
Ref.	Id	Name	St Format	Usage / Remark
PER 01	366	Contact Function Code	M ID 2/2	BD Buyer Name or Department
PER 02	93	Name	O AN 1/60	Free-form name
PER 03	365	Communication Number Qualifier	C ID 2/2	EM Electronic Mail
PER 04	364	Communication Number	C AN 1/256	
PER 05	365	Communication Number Qualifier	C ID 2/2	TE Telephone
PER 06	364	Communication Number	C AN 1/256	

Remark:**Example:**

PER*BD*NAME*EM*NAME@COMPANY.COM

No = Consecutive segment number
 MaxOcc = Maximum occurrence of the segment/group
 Counter = Counter of segment/group within the standard

St=Status
 X12: M=Mandatory, C=Conditional, O=Optional
 User specific: R=Required, O=Optional, D=Dependent,
 N=Not used

Counter	No	Tag	St	MaxOcc	Level	Name
0100		OTI	M	1	1	OTI-TED
0100	19	OTI	M	1	1	Original Transaction Identification

Standard			Implementation	
Ref.	Id	Name	St Format	Usage / Remark
OTI01	110	Application Acknowledgment Code	M ID 1/2	TR Transaction Set Reject
OTI02	128	Reference Identification Qualifier	M ID 2/3	IK Invoice Number PO Purchase Order Number SI Shipper's Identifying Number for Shipment (SID)
OTI03	127	Reference Identification	M AN 1/50	IF IK IN OTI:02 = INVOICE NUMBER IF PO IN OTI:02 = PURCHASE ORDER NUMBER IF SI IN OTI:02 = SHIPPING ID (SID)
OTI10	143	Transaction Set Identifier Code	O ID 3/3	810 Invoice 855 Purchase Order Acknowledgment 856 Ship Notice/Manifest

Remark:

Example:

OTI*TR*PO*5372D-45962*****855

No = Consecutive segment number
 MaxOcc = Maximum occurrence of the segment/group
 Counter = Counter of segment/group within the standard

St=Status
 X12: M=Mandatory, C=Conditional, O=Optional
 User specific: R=Required, O=Optional, D=Dependent, N=Not used

Counter	No	Tag	St	MaxOcc	Level	Name
0700		TED	R	10	2	TED
0700	20	TED	M	1	2	Technical Error Description

Standard			Implementation	
Ref.	Id	Name	St Format	Usage / Remark
TED 01	647	Application Error Condition Code	M ID 1/3	008 Out of Range 009 Invalid Date 010 Total Out of Balance 011 Not Matching 012 Invalid Combination 024 Other Unlisted Reason 026 Customer Identification Number is Invalid 029 Customer Identification Number Is Missing 810 Effective Payment Date is Past C Missing or Invalid Consignee CUR Invalid Currency Code DUP Duplicate Transaction H Missing or Invalid Unit of Measure Code IID Invalid Identification Code IQT Invalid Quantity MB Missing or Invalid Purchase Order Number MC Missing or Invalid Bill of Lading Number MD Missing or Invalid Invoice Date MF Missing or Invalid Internal Vendor Number MH Missing or Invalid DUNS Number MI Missing or Invalid SCAC MID Missing Identification Code MP Missing or Invalid Non-merchandise Code MQ Missing or Invalid Non-merchandise Cost NAU Not Authorized POI Purchase Order Number Invalid Q Missing or Invalid Item Identification UNP Invalid Unit Price
TED 02	3	Free Form Message	O AN 1/60	Free-form text
TED 07	724	Copy of Bad Data Element	O AN 1/99	This is the value of the data element in error.

Remark:

Example:

TED*CUR*INCORRECT CURRENCY CODE

No = Consecutive segment number
 MaxOcc = Maximum occurrence of the segment/group
 Counter = Counter of segment/group within the standard

St=Status
 X12: M=Mandatory, C=Conditional, O=Optional
 User specific: R=Required, O=Optional, D=Dependent, N=Not used

Counter	No	Tag	St	MaxOcc	Level	Name
0900	21	SE	M	1	0	Transaction Set Trailer

Standard			Implementation	
Ref.	Id	Name	St Format	Usage / Remark
SE 01	96	Number of Included Segments	M NO 1/10	
SE 02	329	Transaction Set Control Number	M AN 4/9	

Remark:

Example:

SE*14*0001

No = Consecutive segment number
 MaxOcc = Maximum occurrence of the segment/group
 Counter = Counter of segment/group within the standard

St=Status
 X12: M=Mandatory, C=Conditional, O=Optional
 User specific: R=Required, O=Optional, D=Dependent,
 N=Not used