

X.0 Detailed Guidelines of the Just in Time Message CALDEL/DELJIT within Volvo

X.1 General

This document describes Volvo's application of the Odette subset of the EDIFACT message CALDEL/DELJIT.

The specification offers detailed description of those data elements that will be used.

The basis of this application is the Odette subset of EDIFACT message entitled CALDEL/DELJIT V1R1 based on D96A issued by the secretariat in June 1997.

The purpose and basic function of the message

This message is sent from consignee to the consignor and gives information regarding the details for short-term delivery instructions according to the agreement between partners.

With the CALDEL message, the consignor is informed about the quantity and when and to which destination he shall deliver.

CALDEL is only a short-term delivery instruction. The message will always be used in conjunction with the forecast message DELINS/DELFOR to provide the necessary planning information.

CALDEL message is firm, therefore amendments or replacements of a specific CALDEL message are not possible.

Since the CALDEL message is a delivery instruction only, references to precious despatch or cumulative figures are not included.

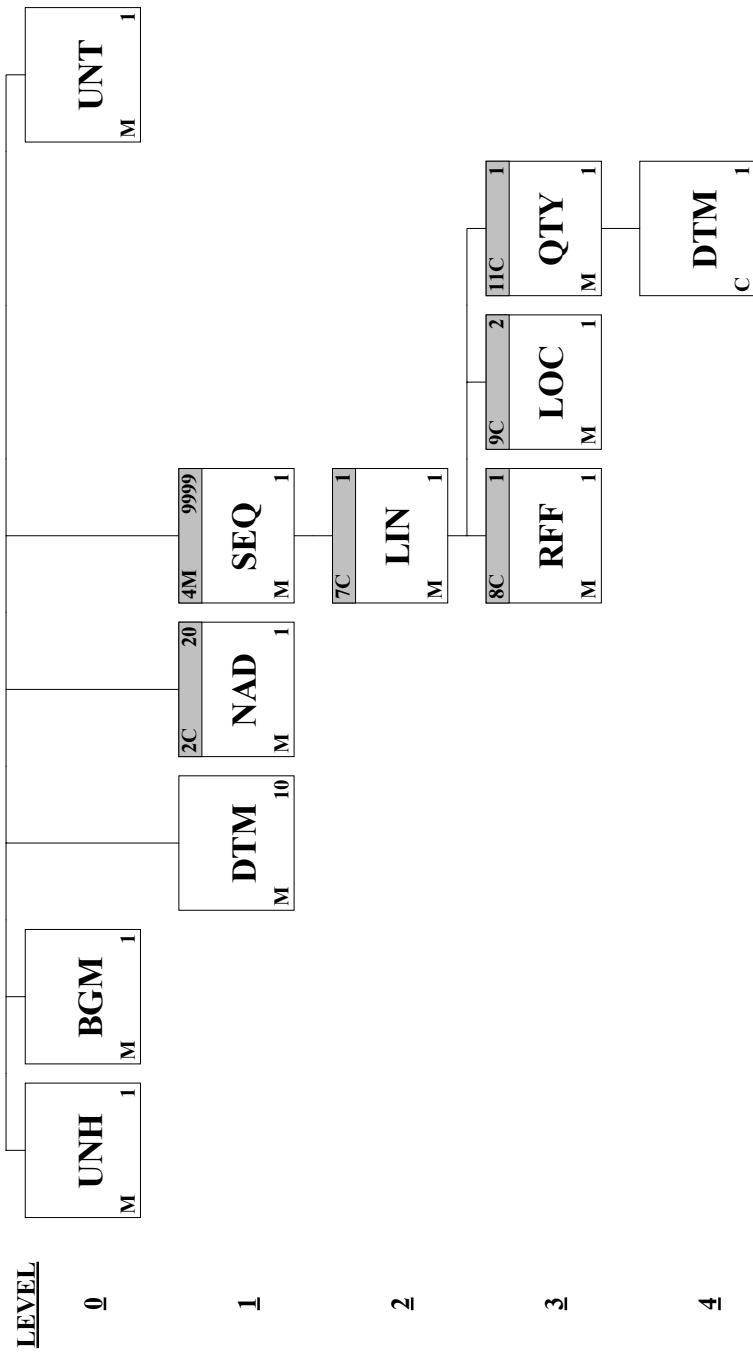
DELJIT (CALDEL/DELJIT V1R1 Based on D96A)

Heading Section:

<u>Page No.</u>	<u>Pos. No.</u>	<u>Seg. ID</u>	<u>Name</u>	<u>Base Status</u>	<u>User Status</u>	<u>Max.Use</u>	<u>Group Repeat</u>
4	0010	UNH	Message Header	M	M	1	
5	0020	BGM	Beginning of Message	M	M	1	
6	0030	DTM	Date/Time/Period	M	M	10	
	0070		Segment Group 2	C	R		20
8	0080	NAD	Name and Address	M	M	1	

Detail Section:

<u>Page No.</u>	<u>Pos. No.</u>	<u>Seg. ID</u>	<u>Name</u>	<u>Base Status</u>	<u>User Status</u>	<u>Max.Use</u>	<u>Group Repeat</u>
	0140		Segment Group 4	M	M		9999
11	0150	SEQ	Sequence Details	M	M	1	
	0240		Segment Group 7	C	R		1
13	0250	LIN	Line Item	M	M	1	
	0340		Segment Group 8	C	R		1
15	0350	RFF	Reference	M	M	1	
	0370		Segment Group 9	C	R		2
17	0380	LOC	Place/Location Identification	M	M	1	
	0420		Segment Group 11	C	R		1
19	0430	QTY	Quantity	M	M	1	
20	0450	DTM	Date/Time/Period	C	R	1	
21	0500	UNT	Message Trailer	M	M	1	



Segment: UNH Message Header
Position: 0010
Group:
Level: 0
Usage: Mandatory
Max Use: 1
Purpose: A service segment starting and uniquely identifying a message. The message type code for the Delivery just in time message is DELJIT.
 Note: Delivery just in time messages conforming to this document must contain the following data in segment UNH, composite S009:
 Data element 0065 DELJIT 0052 D 0054 96A 0051 UN

Data Element Summary

<u>Data Element</u>	<u>Component Element</u>	<u>Name</u>	<u>Base Attributes</u>	<u>User Attributes</u>
0062		MESSAGE REFERENCE NUMBER Unique message reference assigned by the sender.	M an..14	M
S009		MESSAGE IDENTIFIER Identification of the type, version etc. of the message being interchanged.	M	M
	0065	Message type identifier Code identifying a type of message and assigned by its controlling agency. DELJIT Delivery just-in-time message	M an..6	M
	0052	Message type version number Version number of a message type. Value: D	M an..3	M
	0054	Message type release number Release number within the current message type version number (0052). Value: 96A	M an..3	M
	0051	Controlling agency Code identifying the agency controlling the specification, maintenance and publication of the message type. UN UN/ECE/TRADE/WP.4, United Nations Standard Messages (UNSM)	M an..2	M
	0057	Association assigned code Code, assigned by the association responsible for the design and maintenance of the message type concerned, which further identifies the message. Value: A10011	C an..6	R
0068		COMMON ACCESS REFERENCE Reference serving as a key to relate all subsequent transfers of data to the same business case or file.	C an..35	N
S010		STATUS OF THE TRANSFER Statement that the message is one in a sequence of transfers relating to the same topic.	C	N
	0070	Sequence message transfer number Number assigned by the sender indicating that the message is an addition or change of a previously sent message relating to the same topic.	M n..2	N
	0073	First/last sequence message transfer indication Indication used for the first and last message in a sequence of the same type of message relating to the same topic.	C a1	N

Segment: **BGM** Beginning of Message
Position: 0020
Group:
Level: 0
Usage: Mandatory
Max Use: 1
Purpose: A segment for unique identification of the document name and its number.

Data Element Summary

<u>Data Element</u>	<u>Component Element</u>	<u>Name</u>	<u>Base Attributes</u>	<u>User Attributes</u>
C002		DOCUMENT/MESSAGE NAME	C	R
		Identification of a type of document/message by code or name. Code preferred.		
	1001	Document/message name, coded	C an..3	R
		Document/message identifier expressed in code. Value: 36 Calculated delivery		
	1131	Code list qualifier	C an..3	N
		Identification of a code list.		
	3055	Code list responsible agency, coded	C an..3	
		Code identifying the agency responsible for a code list. 10 ODETTE		
	1000	Document/message name	C an..35	N
		Plain language identifier specifying the function of a document/message.		
1004	DOCUMENT/MESSAGE NUMBER	C an..35	R an..17	
	Reference number assigned to the document/message by the issuer.			
1225	MESSAGE FUNCTION, CODED	C an..3	N	
	Code indicating the function of the message.			
4343	RESPONSE TYPE, CODED	C an..3	N	
	Code specifying the type of acknowledgement required or transmitted.			

Segment: **DTM** Date/Time/Period

Position: 0030

Group:

Level: 1

Usage: Mandatory

Max Use: 10

Purpose: A segment specifying the date and, when relevant, the time/period for delivery of that sequence, relating to the whole message. The DTM segment must be specified at least once to identify the Delivery Just In Time document date.
The date/time/period segment within other Segment group should be used whenever the date/time/period requires to be logically related to another specified data item.

Data Element Summary

<u>Data Element</u>	<u>Component Element</u>	<u>Name</u>	<u>Base Attributes</u>	<u>User Attributes</u>
C507		DATE/TIME/PERIOD Date and/or time, or period relevant to the specified date/time/period type.	M	M
	2005	Date/time/period qualifier Code giving specific meaning to a date, time or period. 137 Document/message date/time	M an..3	M
	2380	Date/time/period The value of a date, a date and time, a time or of a period in a specified representation. Date on which the message was created.	C an..35	R an..12
	2379	Date/time/period format qualifier Specification of the representation of a date, a date and time or of a period. 203 CCYYMMDDHHMM	C an..3	R

Group: **NAD** Segment Group 2: Name and Address
Position: 0070
Group:
Level: 1
Usage: Conditional (Required)
Max Use: 20
Purpose: A group of segments identifying names and addresses and their functions relevant for the whole Delivery Just In Time Message.

Segment Summary

	Pos. No.	Seg. ID	Name	Req. Des.	Max. Use	Group: Repeat
M	0080	NAD	Name and Address	M	1	

Segment: **NAD** Name and Address
Position: 0080 (Trigger Segment)
Group: Segment Group 2 (Name and Address) Conditional (Required)
Level: 1
Usage: Mandatory
Max Use: 1
Purpose: A segment for identifying names and addresses and their functions relevant for the whole Delivery Just In Time Message. Identification of the seller and buyer parties is recommended for the Delivery Just In Time. They are to be given in the NAD segment. It is recommended that where possible only the coded form of the party ID should be specified. e.g. The Buyer and Seller are known to each other, thus only the coded ID is required, but the Consignee or Delivery address may vary and would have to be clearly specified, preferably in structured format.

Data Element Summary

<u>Data Element</u>	<u>Component Element</u>	<u>Name</u>	<u>Base Attributes</u>	<u>User Attributes</u>
3035		PARTY QUALIFIER Code giving specific meaning to a party.	M an..3	M
		BY Buyer Required		
		CN Consignee Required		
		CZ Consignor Required		
C082		PARTY IDENTIFICATION DETAILS Identification of a transaction party by code.	C	R
	3039	Party id. identification Code identifying a party involved in a transaction.	M an..35	M an..20
	1131	Code list qualifier Identification of a code list.	C an..3	N
	3055	Code list responsible agency, coded Code identifying the agency responsible for a code list.	C an..3	R
		91 Assigned by seller or seller's agent To be used together with qualifier BY in 3035		
		92 Assigned by buyer or buyer's agent To be used together with qualifier CN and CZ in 3035.		
C058		NAME AND ADDRESS Unstructured name and address: one to five lines.	C	N
	3124	Name and address line Free form name and address description.	M an..35	N
	3124	Name and address line Free form name and address description.	C an..35	N
	3124	Name and address line Free form name and address description.	C an..35	N
	3124	Name and address line Free form name and address description.	C an..35	N
	3124	Name and address line Free form name and address description.	C an..35	N
C080		PARTY NAME Identification of a transaction party by name, one to five lines. Party name may be formatted.	C	N
	3036	Party name Name of a party involved in a transaction.	M an..35	N
	3036	Party name Name of a party involved in a transaction.	C an..35	N

	3036	Party name Name of a party involved in a transaction.	C	an..35	N
	3036	Party name Name of a party involved in a transaction.	C	an..35	N
	3036	Party name Name of a party involved in a transaction.	C	an..35	N
	3045	Party name format, coded Specification of the representation of a party name.	C	an..3	N
C059		STREET Street address and/or PO Box number in a structured address: one to three lines.	C		N
	3042	Street and number/p.o. box Street and number in plain language, or Post Office Box No.	M	an..35	N
	3042	Street and number/p.o. box Street and number in plain language, or Post Office Box No.	C	an..35	N
	3042	Street and number/p.o. box Street and number in plain language, or Post Office Box No.	C	an..35	N
	3042	Street and number/p.o. box Street and number in plain language, or Post Office Box No.	C	an..35	N
3164		CITY NAME Name of a city (a town, a village) for addressing purposes.	C	an..35	N
3229		COUNTRY SUB-ENTITY IDENTIFICATION Identification of the name of sub-entities (state, province) defined by appropriate governmental agencies.	C	an..9	N
3251		POSTCODE IDENTIFICATION Code defining postal zones or addresses.	C	an..9	N
3207		COUNTRY, CODED Identification of the name of a country or other geographical entity as specified in ISO 3166.	C	an..3	N

Group: **SEQ** Segment Group 4: Sequence Details
Position: 0140
Group:
Level: 1
Usage: Mandatory
Max Use: 9999
Purpose: A group of segments providing details related to the delivery sequence. All other segments in this Segment Group 4 following the SEQ segment refer to that sequence.

Segment Summary

	Pos. No.	Seg. ID	Name	Req. Des.	Max. Use	Group: Repeat
M	0150	SEQ	Sequence Details	M	1	
	0240		Segment Group 7: Line Item	C		1

Segment: **SEQ** Sequence Details
Position: 0150 (Trigger Segment)
Group: Segment Group 4 (Sequence Details) Mandatory
Level: 1
Usage: Mandatory
Max Use: 1
Purpose: A segment providing specific details related to the delivery sequence requested by the buyer or recipient of the product.
Notes: This segment is only used as a trigger segment for this message.

Data Element Summary

<u>Data Element</u>	<u>Component Element</u>	<u>Name</u>	<u>Base Attributes</u>	<u>User Attributes</u>
1245		STATUS INDICATOR, CODED Specification of a status or disposition. 3 Created new	C an..3	R
C286		SEQUENCE INFORMATION Identification of a sequence and source for sequencing.	C	N
	1050	Sequence number Number indicating the position in a sequence.	M an..6	N
	1159	Sequence number source, coded Specification of the source for a specified sequence number in a coded form.	C an..3	N
	1131	Code list qualifier Identification of a code list.	C an..3	N
	3055	Code list responsible agency, coded Code identifying the agency responsible for a code list.	C an..3	N

Group: **LIN** Segment Group 7: Line Item
Position: 0240
Group: Segment Group 4 (Sequence Details) Mandatory
Level: 2
Usage: Conditional (Required)
Max Use: 1
Purpose: A group of segments providing details of the individual line items to be delivered.

Segment Summary

	Pos. No.	Seg. ID	Name	Req. Des.	Max. Use	Group: Repeat
M	0250	LIN	Line Item	M	1	
	0340		Segment Group 8: Reference	C		1
	0370		Segment Group 9: Place/Location Identification	C		2
	0420		Segment Group 11: Quantity	C		1

Segment: **LIN** Line Item
Position: 0250 (Trigger Segment)
Group: Segment Group 7 (Line Item) Conditional (Required)
Level: 2
Usage: Mandatory
Max Use: 1
Purpose: A segment identifying the details of the product/service being delivered e.g. product identification. All other segments in the detail section following the LIN segment refer to the line item.

Data Element Summary

<u>Data Element</u>	<u>Component Element</u>	<u>Name</u>	<u>Base Attributes</u>	<u>User Attributes</u>
1082		LINE ITEM NUMBER Serial number designating each separate item within a series of articles.	C n..6	N
1229		ACTION REQUEST/NOTIFICATION, CODED Code specifying the action to be taken or already taken.	C an..3	N
C212		ITEM NUMBER IDENTIFICATION Goods identification for a specified source.	C	R
	7140	Item number A number allocated to a group or item. Buyer's article number without leading blanks or zeroes.	C an..35	R
	7143	Item number type, coded Identification of the type of item number. IN Buyer's item number	C an..3	R
	1131	Code list qualifier Identification of a code list.	C an..3	N
	3055	Code list responsible agency, coded Code identifying the agency responsible for a code list.	C an..3	N
C829		SUB-LINE INFORMATION To provide an indication that a segment or segment group is used to contain sub-line or sub-line item information and to optionally enable the sub-line to be identified.	C	N
	5495	Sub-line indicator, coded Indication that the segment and/or segment group is used for sub-line item information.	C an..3	N
	1082	Line item number Serial number designating each separate item within a series of articles.	C n..6	N
1222		CONFIGURATION LEVEL Number indicating the level of an object which is in a hierarchy.	C n..2	N
7083		CONFIGURATION, CODED Code indicating the status of the sub-line item in the configuration.	C an..3	N

Group: **RFF** Segment Group 8: Reference
Position: 0340
Group: Segment Group 7 (Line Item) Conditional (Required)
Level: 3
Usage: Conditional (Required)
Max Use: 1
Purpose: A group of segments giving references and where necessary, their dates, relating to the line item.

Segment Summary

	Pos.	Seg.		Req.	Max.	Group:
	<u>No.</u>	<u>ID</u>	<u>Name</u>	<u>Des.</u>	<u>Use</u>	<u>Repeat</u>
M	0350	RFF	Reference	M	1	

Segment: **RFF** Reference
Position: 0350 (Trigger Segment)
Group: Segment Group 8 (Reference) Conditional (Required)
Level: 3
Usage: Mandatory
Max Use: 1
Purpose: A segment for referencing document and other numbers related to the line item as specified in the LIN segment.

Data Element Summary

<u>Data Element</u>	<u>Component Element</u>	<u>Name</u>	<u>Base Attributes</u>	<u>User Attributes</u>
C506		REFERENCE Identification of a reference.	M	M
	1153	Reference qualifier Code giving specific meaning to a reference segment or a reference number. AAJ Delivery order number	M an..3	M
	1154	Reference number Identification number the nature and function of which can be qualified by an entry in data element 1153 Reference qualifier.	C an..35	R an..17
	1156	Line number Number of the line in the document/message referenced in 1154 Reference number.	C an..6	N
	4000	Reference version number To uniquely identify a reference by its revision number.	C an..35	N

Group: **LOC** Segment Group 9: Place/Location Identification
Position: 0370
Group: Segment Group 7 (Line Item) Conditional (Required)
Level: 3
Usage: Conditional (Required)
Max Use: 2
Purpose: A group of segments providing delivery location information and where relevant contacts.

Segment Summary

	Pos.	Seg.		Req.	Max.	Group:
	<u>No.</u>	<u>ID</u>	<u>Name</u>	<u>Des.</u>	<u>Use</u>	<u>Repeat</u>
M	0380	LOC	Place/Location Identification	M	1	

Segment: **LOC** Place/Location Identification
Position: 0380 (Trigger Segment)
Group: Segment Group 9 (Place/Location Identification) Conditional (Required)
Level: 3
Usage: Mandatory
Max Use: 1
Purpose: A segment indicating more details regarding specific locations related to the line item.

Data Element Summary				
<u>Data Element</u>	<u>Component Element</u>	<u>Name</u>	<u>Base Attributes</u>	<u>User Attributes</u>
3227		PLACE/LOCATION QUALIFIER Code identifying the function of a location.	M an..3	M
	11	Place/port of discharge Required		
	159	Additional internal destination Required		
C517		LOCATION IDENTIFICATION Identification of a location by code or name.	C	R
	3225	Place/location identification Identification of the name of place/location, other than 3164 City name. To be printed on the transport label, in the field "Dock and Gate" when qualifier 159 is used in 3227.	C an..25	R an..8
	1131	Code list qualifier Identification of a code list.	C an..3	N
	3055	Code list responsible agency, coded Code identifying the agency responsible for a code list.	C an..3	N
	3224	Place/location Name of place/location, other than 3164 City name.	C an..70	N
C519		RELATED LOCATION ONE IDENTIFICATION Identification the first related location by code or name.	C	N
	3223	Related place/location one identification Specification of the first related place/location by code.	C an..25	N
	1131	Code list qualifier Identification of a code list.	C an..3	N
	3055	Code list responsible agency, coded Code identifying the agency responsible for a code list.	C an..3	N
	3222	Related place/location one Specification of the first related place/location by name.	C an..70	N
C553		RELATED LOCATION TWO IDENTIFICATION Identification of second related location by code or name.	C	N
	3233	Related place/location two identification Specification of a second related place/location by code.	C an..25	N
	1131	Code list qualifier Identification of a code list.	C an..3	N
	3055	Code list responsible agency, coded Code identifying the agency responsible for a code list.	C an..3	N
	3232	Related place/location two Specification of a second related place/location by name.	C an..70	N
5479		RELATION, CODED To specify the relationship between two or more items.	C an..3	N

Group: **QTY** Segment Group 11: Quantity
Position: 0420
Group: Segment Group 7 (Line Item) Conditional (Required)
Level: 3
Usage: Conditional (Required)
Max Use: 1
Purpose: A group of segments specifying quantity related information for actual delivery.

Segment Summary

	Pos.	Seg.		Req.	Max.	Group:
	<u>No.</u>	<u>ID</u>	<u>Name</u>	<u>Des.</u>	<u>Use</u>	<u>Repeat</u>
M	0430	QTY	Quantity	M	1	
R	0450	DTM	Date/Time/Period	C	1	

Segment: **QTY** Quantity
Position: 0430 (Trigger Segment)
Group: Segment Group 11 (Quantity) Conditional (Required)
Level: 3
Usage: Mandatory
Max Use: 1
Purpose: A segment to specify pertinent quantities relating to the line item.

Data Element Summary

<u>Data Element</u>	<u>Component Element</u>	<u>Name</u>	<u>Base Attributes</u>	<u>User Attributes</u>
C186		QUANTITY DETAILS Quantity information in a transaction, qualified when relevant.	M	M
	6063	Quantity qualifier Code giving specific meaning to a quantity. 131 Delivery quantity	M an..3	M
	6060	Quantity Numeric value of a quantity.	M n..15	M n..10
	6411	Measure unit qualifier Indication of the unit of measurement in which weight (mass), capacity, length, area, volume or other quantity is expressed.	C an..3	D

Segment: **DTM** Date/Time/Period
Position: 0450
Group: Segment Group 11 (Quantity) Conditional (Required)
Level: 4
Usage: Conditional (Required)
Max Use: 1
Purpose: A segment indicating the date/time/period details relating to the quantity and schedule details in the line item.

Data Element Summary

<u>Data Element</u>	<u>Component Element</u>	<u>Name</u>	<u>Base Attributes</u>	<u>User Attributes</u>
C507		DATE/TIME/PERIOD Date and/or time, or period relevant to the specified date/time/period type.	M	M
	2005	Date/time/period qualifier Code giving specific meaning to a date, time or period. 117 Delivery date/time, first	M an..3	M
	2380	Date/time/period The value of a date, a date and time, a time or of a period in a specified representation. Delivery Date/Time First at Destination	C an..35	R an..14
	2379	Date/time/period format qualifier Specification of the representation of a date, a date and time or of a period. 203 CCYYMMDDHHMM	C an..3	R

Segment: **UNT** Message Trailer
Position: 0500
Group:
Level: 0
Usage: Mandatory
Max Use: 1
Purpose: A service segment ending a message, giving the total number of segments in the message and the control reference number of the message.

Data Element Summary

<u>Data Element</u>	<u>Component Element</u>	<u>Name</u>	<u>Base Attributes</u>	<u>User Attributes</u>
0074		NUMBER OF SEGMENTS IN A MESSAGE Control count of number of segments in a message.	M n..6	M
0062		MESSAGE REFERENCE NUMBER Unique message reference assigned by the sender.	M an..14	M

UNB+UNOC:3+094200005560139700001540:OD+1596820332KE07+000111:0331+330890'
UNH+00001+DELJIT:D:96A:UN:A10011'
BGM+242+AS0071+9'
DTM+137:199902061000:203'
NAD+BY+10256::91'
NAD+CN+1540::92'
NAD+CZ+13635::92'
SEQ+3'
LIN+++966966:IN'
RFF+AAJ:Refnr1'
LOC+11+600'
LOC+159+A3-A1'
QTY+131:100:PCE'
DTM+117:200002061000:203'
SEQ+3'
LIN+++966966:IN'
RFF+AAJ:Refnr1'
LOC+11+600'
LOC+159+A3-A2'
QTY+131:200:PCE'
DTM+117:200002061000:203'
SEQ+3'
LIN+++966967:IN'
RFF+AAJ:Refnr1'
LOC+11+600'
LOC+159+A3-A1'
QTY+131:100:PCE'
DTM+117:200002061000:203'
SEQ+3'
LIN+++966966:IN'
RFF+AAJ:Refnr5'
LOC+11+600'
LOC+159+A3-A3'
QTY+131:200:PCE'
DTM+117:200002061000:203'
UNT+35+00001'
UNZ+1+330890'