



Message Specification

Service Market and Dealer ship 856 004010

Based on:

856

Ship Notice/Manifest

X12 004010

Version: 1
Variant: 1
Issue date: 17/09/2020
Author: Volvo Group IT

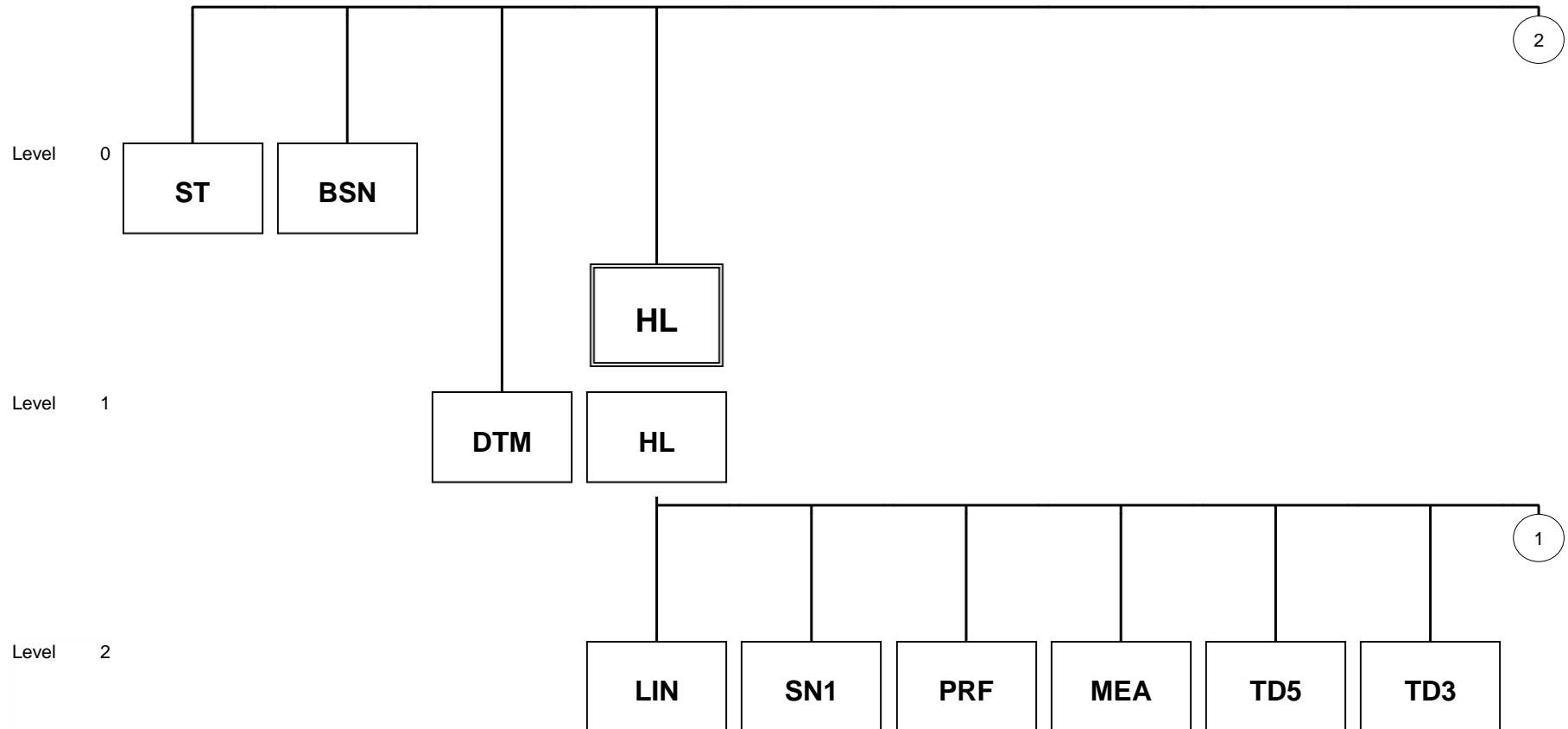
Message Structure

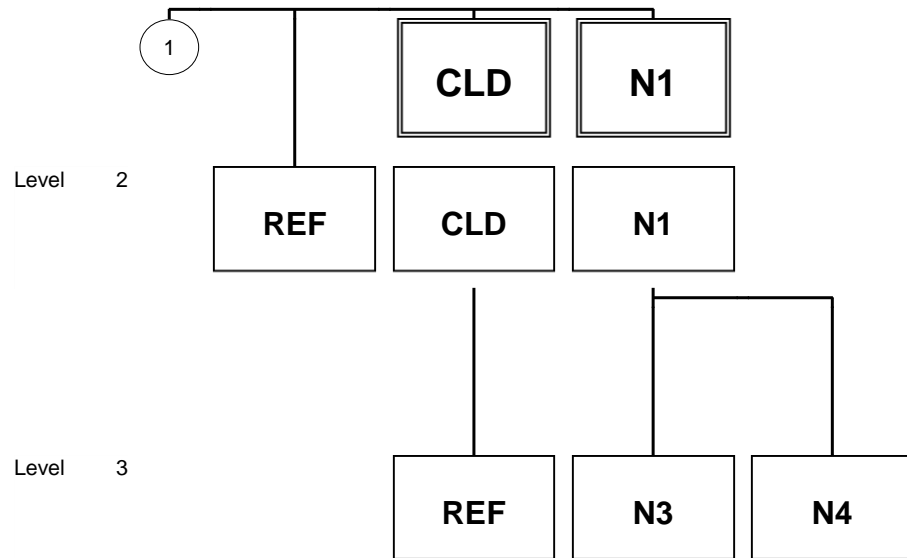
Counter	No	Tag	St	MaxOcc	Level	Content
0010	1	ST	M	1	0	Transaction Set Header
0020	2	BSN	M	1	0	Beginning Segment for Ship Notice
0040	3	DTM	O	1	1	Shipment date
0010		HL	M	1	1	Hierarchical Level
0010	4	HL	M	1	1	Hierarchical Level
0080	5	MEA	D	1	2	Weight of shipment
0080	6	MEA	D	1	2	Volume of shipment
0120	7	TD5	R	1	2	Carrier Details (Routing Sequence/Transit Time)
0130	8	TD3	D	1	2	Carrier Details (Equipment)
0150	9	REF	R	1	2	Carrier's reference number
0150	10	REF	D	1	2	Dealer purchase order number
0150	11	REF	D	1	2	Dock Number
0220		N1	R	1	2	Ship From identifications
0220	12	N1	M	1	2	Ship From identifications
0240	13	N3	O	1	3	Address Information
0250	14	N4	O	1	3	Geographic Location
0220		N1	D	1	2	Seller identifications
0220	15	N1	M	1	2	Seller identifications
0240	16	N3	O	1	3	Address Information
0250	17	N4	O	1	3	Geographic Location
0220		N1	R	1	2	Ship To identifications
0220	18	N1	M	1	2	Ship To identifications
0240	19	N3	O	1	3	Address Information
0250	20	N4	O	1	3	Geographic Location
0220		N1	O	1	2	Buyer identifications
0220	21	N1	M	1	2	Buyer identifications
0240	22	N3	O	1	3	Address Information
0250	23	N4	O	1	3	Geographic Location
0010		HL	M	200000	1	Hierarchical Level
0010	24	HL	M	1	1	Hierarchical Level
0020	25	LIN	R	1	2	Item Identification
0030	26	SN1	R	1	2	Item Detail (Shipment)
0050	27	PRF	R	1	2	Purchase Order Reference
0170		CLD	R	200	2	CLD-REF
0170	28	CLD	R	1	2	Load Detail
0180	29	REF	D	200	3	Reference Identification
0010	30	CTT	M	1	0	Transaction Totals
0020	31	SE	M	1	0	Transaction Set Trailer

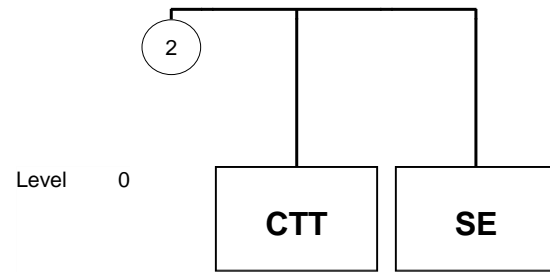
Counter = Counter of segment/group within the standard
 No = Consecutive segment number
 MaxOcc = Maximum occurrence of the segment/group

St = Status
 X12: M=Mandatory, C=Conditional, O=Optional
 User specific: R=Required, O=Optional, D=Dependent, N=Not used

Branching Diagram of Used Segments/Groups







Segments

Counter	No	Tag	St	MaxOcc	Level	Name
0010	1	ST	M	1	0	Transaction Set Header

Standard			Implementation	
Ref.	Id	Name	St Format	Usage / Remark
ST01	143	Transaction Set Identifier Code	M ID 3/3	Code uniquely identifying a Transaction Set 856 Ship Notice/Manifest
ST02	329	Transaction Set Control Number	M AN 4/9	Identifying control number that must be unique within the transaction set functional group assigned by the originator for a transaction set

Remark:

Example:

ST*856*721422084'

No = Consecutive segment number
 MaxOcc = Maximum occurrence of the segment/group
 Counter = Counter of segment/group within the standard

St=Status
 X12: M=Mandatory, C=Conditional, O=Optional
 User specific: R=Required, O=Optional, D=Dependent,
 N=Not used

Counter	No	Tag	St	MaxOcc	Level	Name
0020	2	BSN	M	1	0	Beginning Segment for Ship Notice

Standard			Implementation	
Ref.	Id	Name	St Format	Usage / Remark
BSN01	353	Transaction Set Purpose Code	M ID 2/2	Code identifying purpose of transaction set 00 Original
BSN02	396	Shipment Identification	M AN 2/17	A unique control number assigned by the original shipper to identify a specific shipment Note: This is the "SID" number or "Shipping ID" number that must be referenced on the paper packing list and the ASN. This field can be Alpha Numeric. Special Characters should not be used.
BSN03	373	Date	M DT 8/8	CCYYMMDD This date on which the message (ASN) was created. It should always match the actual date of shipment
BSN04	337	Time	M TM 4/4	HHMM

Remark:

Example:

BSN*00*721422084*20170608*1659'

No = Consecutive segment number
 MaxOcc = Maximum occurrence of the segment/group
 Counter = Counter of segment/group within the standard

St=Status
 X12: M=Mandatory, C=Conditional, O=Optional
 User specific: R=Required, O=Optional, D=Dependent,
 N=Not used

Counter	No	Tag	St	MaxOcc	Level	Name
---------	----	-----	----	--------	-------	------

0040	3	DTM	O	1	1	Shipment date
------	---	------------	---	---	---	---------------

Standard			Implementation	
Ref.	Id	Name	St Format	Usage / Remark
DTM01	374	Date/Time Qualifier	M ID 3/3	Code specifying type of date or time, or both date and time 011 Shipped
DTM02	373	Date	R DT 8/8	CCYYMMDD
DTM03	337	Time	R TM 4/4	HHMM
DTM04	623	Time Code	R ID 2/2	CT Central Time ET Eastern Time MT Mountain Time PT Pacific Time

Remark:

Example:

DTM*011*20170608*1659*CT'

No = Consecutive segment number
 MaxOcc = Maximum occurrence of the segment/group
 Counter = Counter of segment/group within the standard

St=Status
 X12: M=Mandatory, C=Conditional, O=Optional
 User specific: R=Required, O=Optional, D=Dependent,
 N=Not used

Counter	No	Tag	St	MaxOcc	Level	Name
	0010	HL	M	1	1	Hierarchical Level
	0010	4 HL	M	1	1	Hierarchical Level

Standard			Implementation	
Ref.	Id	Name	St Format	Usage / Remark
HL 01	628	Hierarchical ID Number	M AN 1/12	A unique number assigned by the sender to identify a particular data segment in a hierarchical structure At the shipment level, this data element should always be '1'
HL 03	735	Hierarchical Level Code	M ID 1/2	Code defining the characteristic of a level in a hierarchical structure S Shipment

Remark:

Example:

HL*1**S'

No = Consecutive segment number
 MaxOcc = Maximum occurrence of the segment/group
 Counter = Counter of segment/group within the standard

St=Status
 X12: M=Mandatory, C=Conditional, O=Optional
 User specific: R=Required, O=Optional, D=Dependent,
 N=Not used

Counter	No	Tag	St	MaxOcc	Level	Name
0010		HL	M	1	1	Hierarchical Level
0080	5	MEA	D	1	2	Weight of shipment

Standard			Implementation	
Ref.	Id	Name	St Format	Usage / Remark
MEA 01	737	Measurement Reference ID Code	R ID 2/2	Code identifying the broad category to which a measurement applies PD Physical Dimensions
MEA 02	738	Measurement Qualifier	R ID 1/3	Code identifying a specific product or process characteristic to which a measurement applies G Gross Weight
MEA 03	739	Measurement Value	R R 1/20	The value of the measurement. Total Weight. Maximum 3 decimals.
	C001	Composite Unit of Measure	R	To identify a composite unit of measure
MEA 04	355	Unit or Basis for Measurement Code	M ID 2/2	Code specifying the units in which a value is being expressed, or manner in which a measurement has been taken KG Kilogram LB Pound

Remark:
Total consignment gross weight - weight including inner and outer packaging.
Not required if the supplier is responsible for the shipment.

Example:
MEA*PD*G*180*KG'

No = Consecutive segment number
MaxOcc = Maximum occurrence of the segment/group
Counter = Counter of segment/group within the standard

St=Status
X12: M=Mandatory, C=Conditional, O=Optional
User specific: R=Required, O=Optional, D=Dependent, N=Not used

Counter	No	Tag	St	MaxOcc	Level	Name
0010		HL	M	1	1	Hierarchical Level
0080	6	MEA	D	1	2	Volume of shipment

Standard			Implementation	
Ref.	Id	Name	St Format	Usage / Remark
MEA 01	737	Measurement Reference ID Code	R ID 2/2	Code identifying the broad category to which a measurement applies PD Physical Dimensions
MEA 02	738	Measurement Qualifier	R ID 1/3	Code identifying a specific product or process characteristic to which a measurement applies VOL Volume
MEA 03	739	Measurement Value	R R 1/20	The value of the measurement Volume measure. Maximum 3 decimals.
	C001	Composite Unit of Measure	R	To identify a composite unit of measure
MEA 04	355	Unit or Basis for Measurement Code	M ID 2/2	Code specifying the units in which a value is being expressed, or manner in which a measurement has been taken CR Cubic Meter CF Cubic Feet

Remark:
Total cube of all goods items referred to as one despatch.
Not required if the supplier is responsible for the shipment.

Example:
MEA*PD*VOL*10*CR'

No = Consecutive segment number
MaxOcc = Maximum occurrence of the segment/group
Counter = Counter of segment/group within the standard

St=Status
X12: M=Mandatory, C=Conditional, O=Optional
User specific: R=Required, O=Optional, D=Dependent, N=Not used

Counter	No	Tag	St	MaxOcc	Level	Name
0010		HL	M	1	1	Hierarchical Level
0120	7	TD5	R	1	2	Carrier Details (Routing Sequence/Transit Time)

Standard			Implementation	
Ref.	Id	Name	St Format	Usage / Remark
TD5 01	133	Routing Sequence Code	R ID 1/2	Code describing the relationship of a carrier to a specific shipment movement B Origin/Delivery Carrier (Any Mode)
TD5 02	66	Identification Code Qualifier	R ID 1/2	Code designating the system/method of code structure used for Identification Code (67) 2 Standard Carrier Alpha Code (SCAC)
TD5 03	67	Identification Code	R AN 2/35	Code identifying a party or other code Should represent the SCAC (Standard Carrier Account Code) as agreed upon in the trading partner agreement.
TD5 04	91	Transportation Method/Type Code	R ID 1/2	In case of Customer Pickup, give NA (Not Applicable) Code specifying the method or type of transportation for the shipment A Air C Consolidation H Customer Pickup L Contract Carrier LT Less Than Trailer Load (LTL) M Motor (Common Carrier) SR Supplier Truck

Remark:

Example:

TD5*B*2*YFSY*LT'

No = Consecutive segment number
 MaxOcc = Maximum occurrence of the segment/group
 Counter = Counter of segment/group within the standard

St=Status
 X12: M=Mandatory, C=Conditional, O=Optional
 User specific: R=Required, O=Optional, D=Dependent,
 N=Not used

Counter	No	Tag	St	MaxOcc	Level	Name
0010		HL	M	1	1	Hierarchical Level
0130	8	TD3	D	1	2	Carrier Details (Equipment)

Standard			Implementation	
Ref.	Id	Name	St Format	Usage / Remark
TD3 01	40	Equipment Description Code	R ID 2/2	Code identifying type of equipment used for shipment CN Container TL Trailer (not otherwise specified)
TD3 03	207	Equipment Number	R AN 1/10	Sequencing or serial part of an equipment unit's identifying number (pure numeric form for equipment number is preferred) Trailer number is required for full trailer load shipments

Remark:

This segment is only required if the shipment is a full trailer load. For oversea shipments, the container number could be sent if known at the time of shipment.

Example:

TD3*TL**PURQ3HR255 '
TD3*CN**CON2236544 '

No = Consecutive segment number
MaxOcc = Maximum occurrence of the segment/group
Counter = Counter of segment/group within the standard

St=Status
X12: M=Mandatory, C=Conditional, O=Optional
User specific: R=Required, O=Optional, D=Dependent, N=Not used

Counter	No	Tag	St	MaxOcc	Level	Name
0010		HL	M	1	1	Hierarchical Level
0150	9	REF	R	1	2	Carrier's reference number

Standard			Implementation	
Ref.	Id	Name	St Format	Usage / Remark
REF 01	128	Reference Identification Qualifier	M ID 2/3	Code qualifying the Reference Identification CN Carrier's Reference Number
REF 02	127	Reference Identification	R AN 1/30	Reference information as defined for a particular Transaction Set or as specified by the Reference Identification Qualifier Primary rule: When using Volvo ATLAS or ShipIT system to generate the Transport Booking Request, the TBR ID should always be the reference given in REF02. In other cases: The REF02 shall contain a reference to the transport document number (Carrier's Reference Number: Pro Number, Tracking Number, AWB, BL). Note: The reference number must be clearly shown on the Transport document and be identical to the number given in REF02

Remark:

The identification number on the Transport Booking Request or the transport document, valid between Consignor/Supplier, Carrier and Volvo.

Example:

REF*CN*1633371107'

No = Consecutive segment number
MaxOcc = Maximum occurrence of the segment/group
Counter = Counter of segment/group within the standard

St=Status
X12: M=Mandatory, C=Conditional, O=Optional
User specific: R=Required, O=Optional, D=Dependent, N=Not used

Counter	No	Tag	St	MaxOcc	Level	Name
0010		HL	M	1	1	Hierarchical Level
0150	10	REF	D	1	2	Dealer purchase order number

Standard			Implementation	
Ref.	Id	Name	St Format	Usage / Remark
REF 01	128	Reference Identification Qualifier	M ID 2/3	Code qualifying the Reference Identification DC Dealer purchase order number
REF 02	127	Reference Identification	R AN 1/30	Reference information as defined for a particular Transaction Set or as specified by the Reference Identification Qualifier

Remark:

This segment is only required if sent in the order.

Example:

REF*DC*981234'

No = Consecutive segment number
 MaxOcc = Maximum occurrence of the segment/group
 Counter = Counter of segment/group within the standard

St=Status
 X12: M=Mandatory, C=Conditional, O=Optional
 User specific: R=Required, O=Optional, D=Dependent,
 N=Not used

Counter	No	Tag	St	MaxOcc	Level	Name
0010		HL	M	1	1	Hierarchical Level
0150	11	REF	D	1	2	Dock Number

Standard			Implementation	
Ref.	Id	Name	St Format	Usage / Remark
REF 01	128	Reference Identification Qualifier	M ID 2/3	Code qualifying the Reference Identification DK Dock Number
REF 02	127	Reference Identification	R AN 1/30	Reference information as defined for a particular Transaction Set or as specified by the Reference Identification Qualifier

Remark:

This segment is only required if sent in the order.

Example:

REF*DK*556'

No = Consecutive segment number
 MaxOcc = Maximum occurrence of the segment/group
 Counter = Counter of segment/group within the standard

St=Status
 X12: M=Mandatory, C=Conditional, O=Optional
 User specific: R=Required, O=Optional, D=Dependent,
 N=Not used

Counter	No	Tag	St	MaxOcc	Level	Name
0220		N1	R	1	2	Ship From identifications
0220	12	N1	M	1	2	Ship From identifications

Standard			Implementation	
Ref.	Id	Name	St Format	Usage / Remark
N1 01	98	Entity Identifier Code	M ID 2/3	Code identifying an organizational entity, a physical location, property or an individual SF Ship From
N1 02	93	Name	O AN 1/35	Free-form name
N1 03	66	Identification Code Qualifier	R ID 1/2	Code designating the system/method of code structure used for Identification Code (67) 92 Assigned by Buyer or Buyer's Agent
N1 04	67	Identification Code	R AN 2/35	Code identifying a party or other code

Remark:

Example:

N1*SF*ABC CORPORATION*92*54321'

No = Consecutive segment number
 MaxOcc = Maximum occurrence of the segment/group
 Counter = Counter of segment/group within the standard

St=Status
 X12: M=Mandatory, C=Conditional, O=Optional
 User specific: R=Required, O=Optional, D=Dependent,
 N=Not used

Counter	No	Tag	St	MaxOcc	Level	Name
0220		N1	R	1	2	Ship From identifications
0240	13	N3	O	1	3	Address Information

Standard			Implementation	
Ref.	Id	Name	St Format	Usage / Remark
N3 01	166	Address Information	M AN 1/55	Street

Remark:

Example:

N3*245 MAIN STREET'

No = Consecutive segment number
 MaxOcc = Maximum occurrence of the segment/group
 Counter = Counter of segment/group within the standard

St=Status
 X12: M=Mandatory, C=Conditional, O=Optional
 User specific: R=Required, O=Optional, D=Dependent,
 N=Not used

Counter	No	Tag	St	MaxOcc	Level	Name
0220		N1	R	1	2	Ship From identifications
0250	14	N4	O	1	3	Geographic Location

Standard			Implementation	
Ref.	Id	Name	St Format	Usage / Remark
N4 01	19	City Name	O AN 2/30	Free-form text for city name
N4 02	156	State or Province Code	O ID 2/2	Code (Standard State/Province) as defined by appropriate government agency
N4 03	116	Postal Code	O ID 3/15	Code defining international postal zone code excluding punctuation and blanks (zip code for United States)
N4 04	26	Country Code	O ID 2/3	Code identifying the country

Remark:

Example:

N4*GREENSBORO*NC*27021*US'

No = Consecutive segment number
 MaxOcc = Maximum occurrence of the segment/group
 Counter = Counter of segment/group within the standard

St=Status
 X12: M=Mandatory, C=Conditional, O=Optional
 User specific: R=Required, O=Optional, D=Dependent, N=Not used

Counter	No	Tag	St	MaxOcc	Level	Name
0220		N1	D	1	2	Seller identifications Required when Ship From and Seller have been allocated different identities by the Buyer.
0220	15	N1	M	1	2	Seller identifications

Standard			Implementation	
Ref.	Id	Name	St Format	Usage / Remark
N1 01	98	Entity Identifier Code	M ID 2/3	Code identifying an organizational entity, a physical location, property or an individual SE Selling Party
N1 02	93	Name	O AN 1/35	Free-form name
N1 03	66	Identification Code Qualifier	R ID 1/2	Code designating the system/method of code structure used for Identification Code (67) 92 Assigned by Buyer or Buyer's Agent
N1 04	67	Identification Code	R AN 2/35	Code identifying a party or other code

Remark:

Example:

N1*SE*SUPPLIER ABC*92*45321'

No = Consecutive segment number
 MaxOcc = Maximum occurrence of the segment/group
 Counter = Counter of segment/group within the standard

St=Status
 X12: M=Mandatory, C=Conditional, O=Optional
 User specific: R=Required, O=Optional, D=Dependent,
 N=Not used

Counter	No	Tag	St	MaxOcc	Level	Name
0220		N1	D	1	2	Seller identifications Required when Ship From and Seller have been allocated different identities by the Buyer.
0240	16	N3	O	1	3	Address Information

Standard			Implementation	
Ref.	Id	Name	St Format	Usage / Remark
N3 01	166	Address Information	M AN 1/55	Street

Remark:

Example:

N3*245 MAIN STREET'

No = Consecutive segment number
 MaxOcc = Maximum occurrence of the segment/group
 Counter = Counter of segment/group within the standard

St=Status
 X12: M=Mandatory, C=Conditional, O=Optional
 User specific: R=Required, O=Optional, D=Dependent,
 N=Not used

Counter	No	Tag	St	MaxOcc	Level	Name
0220		N1	D	1	2	Seller identifications Required when Ship From and Seller have been allocated different identities by the Buyer.
0250	17	N4	O	1	3	Geographic Location

Standard			Implementation		
Ref.	Id	Name	St	Format	Usage / Remark
N4 01	19	City Name	O	AN 2/30	Free-form text for city name
N4 02	156	State or Province Code	O	ID 2/2	Code (Standard State/Province) as defined by appropriate government agency
N4 03	116	Postal Code	O	ID 3/15	Code defining international postal zone code excluding punctuation and blanks (zip code for United States)
N4 04	26	Country Code	O	ID 2/3	Code identifying the country

Remark:

Example:

N4*GREENSBORO*NC*27021*US '

No = Consecutive segment number
 MaxOcc = Maximum occurrence of the segment/group
 Counter = Counter of segment/group within the standard

St=Status
 X12: M=Mandatory, C=Conditional, O=Optional
 User specific: R=Required, O=Optional, D=Dependent,
 N=Not used

Counter	No	Tag	St	MaxOcc	Level	Name
0220		N1	R	1	2	Ship To identifications
0220	18	N1	M	1	2	Ship To identifications

Standard			Implementation	
Ref.	Id	Name	St Format	Usage / Remark
N1 01	98	Entity Identifier Code	M ID 2/3	Code identifying an organizational entity, a physical location, property or an individual ST Ship To
N1 02	93	Name	O AN 1/35	Free-form name
N1 03	66	Identification Code Qualifier	R ID 1/2	Code designating the system/method of code structure used for Identification Code (67) 92 Assigned by Buyer or Buyer's Agent
N1 04	67	Identification Code	R AN 2/35	Code identifying a party or other code Use the "Ship To" destination code sent on the 850

Remark:

Example:

N1*ST*ABC CORPORATION*92*54321'

No = Consecutive segment number
 MaxOcc = Maximum occurrence of the segment/group
 Counter = Counter of segment/group within the standard

St=Status
 X12: M=Mandatory, C=Conditional, O=Optional
 User specific: R=Required, O=Optional, D=Dependent,
 N=Not used

Counter	No	Tag	St	MaxOcc	Level	Name
0220		N1	R	1	2	Ship To identifications
0240	19	N3	O	1	3	Address Information

Standard			Implementation	
Ref.	Id	Name	St Format	Usage / Remark
N3 01	166	Address Information	M AN 1/55	Street

Remark:

Example:

N3*245 DEALER STREET'

No = Consecutive segment number
 MaxOcc = Maximum occurrence of the segment/group
 Counter = Counter of segment/group within the standard

St=Status
 X12: M=Mandatory, C=Conditional, O=Optional
 User specific: R=Required, O=Optional, D=Dependent,
 N=Not used

Counter	No	Tag	St	MaxOcc	Level	Name
0220		N1	R	1	2	Ship To identifications
0250	20	N4	O	1	3	Geographic Location

Standard			Implementation	
Ref.	Id	Name	St Format	Usage / Remark
N4 01	19	City Name	O AN 2/30	Free-form text for city name
N4 02	156	State or Province Code	O ID 2/2	Code (Standard State/Province) as defined by appropriate government agency
N4 03	116	Postal Code	O ID 3/15	Code defining international postal zone code excluding punctuation and blanks (zip code for United States)
N4 04	26	Country Code	O ID 2/3	Code identifying the country

Remark:

Example:

N4*ALLENTOWN*PA*18015*US'

No = Consecutive segment number
 MaxOcc = Maximum occurrence of the segment/group
 Counter = Counter of segment/group within the standard

St=Status
 X12: M=Mandatory, C=Conditional, O=Optional
 User specific: R=Required, O=Optional, D=Dependent,
 N=Not used

Counter	No	Tag	St	MaxOcc	Level	Name
0220		N1	O	1	2	Buyer identifications
0220	21	N1	M	1	2	Buyer identifications

Standard			Implementation	
Ref.	Id	Name	St Format	Usage / Remark
N1 01	98	Entity Identifier Code	M ID 2/3	Code identifying an organizational entity, a physical location, property or an individual BY Buying Party (Purchaser)
N1 02	93	Name	O AN 1/35	Free-form name
N1 03	66	Identification Code Qualifier	R ID 1/2	Code designating the system/method of code structure used for Identification Code (67) 92 Assigned by Buyer or Buyer's Agent
N1 04	67	Identification Code	R AN 2/35	Code identifying a party or other code

Remark:

Example:

N1*BY*VOLVO TRUCKS NA INC*92*04388'

No = Consecutive segment number
 MaxOcc = Maximum occurrence of the segment/group
 Counter = Counter of segment/group within the standard

St=Status
 X12: M=Mandatory, C=Conditional, O=Optional
 User specific: R=Required, O=Optional, D=Dependent,
 N=Not used

Counter	No	Tag	St	MaxOcc	Level	Name
0220		N1	O	1	2	Buyer identifications
0240	22	N3	O	1	3	Address Information

Standard			Implementation	
Ref.	Id	Name	St Format	Usage / Remark
N3 01	166	Address Information	M AN 1/35	Street

Remark:

Example:

N3*4881 COUGAR TRAIL ROAD'

No = Consecutive segment number
 MaxOcc = Maximum occurrence of the segment/group
 Counter = Counter of segment/group within the standard

St=Status
 X12: M=Mandatory, C=Conditional, O=Optional
 User specific: R=Required, O=Optional, D=Dependent,
 N=Not used

Counter	No	Tag	St	MaxOcc	Level	Name
0220		N1	O	1	2	Buyer identifications
0250	23	N4	O	1	3	Geographic Location

Standard			Implementation	
Ref.	Id	Name	St Format	Usage / Remark
N4 01	19	City Name	O AN 2/30	Free-form text for city name
N4 02	156	State or Province Code	O ID 2/2	Code (Standard State/Province) as defined by appropriate government agency
N4 03	116	Postal Code	O ID 3/15	Code defining international postal zone code excluding punctuation and blanks (zip code for United States)
N4 04	26	Country Code	O ID 2/3	Code identifying the country

Remark:

Example:

N4*DUBLIN*VA*24084*US'

No = Consecutive segment number
 MaxOcc = Maximum occurrence of the segment/group
 Counter = Counter of segment/group within the standard

St=Status
 X12: M=Mandatory, C=Conditional, O=Optional
 User specific: R=Required, O=Optional, D=Dependent,
 N=Not used

Counter	No	Tag	St	MaxOcc	Level	Name
0010		HL	M	200000	1	Hierarchical Level
0010	24	HL	M	1	1	Hierarchical Level

Standard			Implementation	
Ref.	Id	Name	St Format	Usage / Remark
HL 01	628	Hierarchical ID Number	M AN 1/12	A unique number assigned by the sender to identify a particular data segment in a hierarchical structure Sequential number beginning with 2
HL 03	735	Hierarchical Level Code	M ID 1/2	Code defining the characteristic of a level in a hierarchical structure I Item

Remark:

Example:

HL*2**I'

No = Consecutive segment number
 MaxOcc = Maximum occurrence of the segment/group
 Counter = Counter of segment/group within the standard

St=Status
 X12: M=Mandatory, C=Conditional, O=Optional
 User specific: R=Required, O=Optional, D=Dependent,
 N=Not used

Counter	No	Tag	St	MaxOcc	Level	Name
0010		HL	M	200000	1	Hierarchical Level
0020	25	LIN	R	1	2	Item Identification

Standard			Implementation	
Ref.	Id	Name	St Format	Usage / Remark
LIN 02	235	Product/Service ID Qualifier	M ID 2/2	Code identifying the type/source of the descriptive number used in Product/Service ID (234) BP Buyer's Part Number
LIN 03	234	Product/Service ID	M AN 1/48	Identifying number for a product or service Volvo Group Part Number
LIN 04	235	Product/Service ID Qualifier	D ID 2/2	CH Country of Origin Code
LIN 05	234	Product/Service ID	D AN 1/48	Identifying number for a product or service Standard Alpha ISO Codes To be used when legally required (e.g. for export shipment) and/or in agreement between concerned parties.

Remark:

Example:

LIN**BP*20400992*CH*US'

No = Consecutive segment number
 MaxOcc = Maximum occurrence of the segment/group
 Counter = Counter of segment/group within the standard

St=Status
 X12: M=Mandatory, C=Conditional, O=Optional
 User specific: R=Required, O=Optional, D=Dependent,
 N=Not used

Counter	No	Tag	St	MaxOcc	Level	Name
0010		HL	M	200000	1	Hierarchical Level
0030	26	SN1	R	1	2	Item Detail (Shipment)

Standard			Implementation	
Ref.	Id	Name	St Format	Usage / Remark
SN1 02	382	Number of Units Shipped	M R 1/10	Numeric value of units shipped in manufacturer's shipping units for a line item or transaction set Net Quantity Shipped This Quantity MUST MATCH the equation in all the CLD segments under one line loop: If CLD*2*120' (2 x 120 = 240) then this Quantity MUST be 240.
SN1 03	355	Unit or Basis for Measurement Code	M ID 2/2	Code specifying the units in which a value is being expressed, or manner in which a measurement has been taken CN Can CR Cubic Meter DM Decimeter DR Drum EA Each FT Foot GA Gallon GR Gram HU Hundred KG Kilogram KT Kit LB Pound LT Liter ML Milliliter MM Millimeter MR Meter OZ Ounce - Av PK Package PR Pair PT Pint QT Quart SC Square Centimeter SM Square Meter T3 Thousand Pieces If no unit code is given the default value is EA for each/pieces

Remark:
UOM needs to reflect what was sent in the order.

Example:
SN1**694*EA'

No = Consecutive segment number
 MaxOcc = Maximum occurrence of the segment/group
 Counter = Counter of segment/group within the standard

St=Status
 X12: M=Mandatory, C=Conditional, O=Optional
 User specific: R=Required, O=Optional, D=Dependent,
 N=Not used

Counter	No	Tag	St	MaxOcc	Level	Name
0010		HL	M	200000	1	Hierarchical Level
0050	27	PRF	R	1	2	Purchase Order Reference

Standard			Implementation	
Ref.	Id	Name	St Format	Usage / Remark
PRF 01	324	Purchase Order Number	M AN 1/22	Identifying number for Purchase Order assigned by the orderer/purchaser Volvo Group Purchase Order Number

Remark:

Example:

PRF*M123456-556'

No = Consecutive segment number
 MaxOcc = Maximum occurrence of the segment/group
 Counter = Counter of segment/group within the standard

St=Status
 X12: M=Mandatory, C=Conditional, O=Optional
 User specific: R=Required, O=Optional, D=Dependent,
 N=Not used

Counter	No	Tag	St	MaxOcc	Level	Name
0170		CLD	R	200	2	CLD-REF
This segment group shall be repeated, if any of these conditions apply: 1) The same article is packed with different quantities per package/handling unit. 2) An article number is packed into more than one homogenous (M) or mixed (G) handling unit. Please refer to EDI guidelines for examples.						
0170	28	CLD	R	1	2	Load Detail

Standard			Implementation	
Ref.	Id	Name	St Format	Usage / Remark
CLD 01	622	Number of Loads	M NO 1/5	Number of customer-defined loads shipped by the supplier
CLD 02	382	Number of Units Shipped	M R 1/10	Numeric value of units shipped in manufacturer's shipping units for a line item or transaction set

Remark:

The Sum of all the CLD loops (CLD01 multiplied by the CLD02) for this part shipped MUST BE EQUAL to the SN102, total quantity shipped for this part.

IMPORTANT EXAMPLE:

CLD*2*347' (2 x 347 = 694) The SN102 element value must be 694

SN1**694*EA'

Example:

CLD*2*347'

No = Consecutive segment number
 MaxOcc = Maximum occurrence of the segment/group
 Counter = Counter of segment/group within the standard

St=Status
 X12: M=Mandatory, C=Conditional, O=Optional
 User specific: R=Required, O=Optional, D=Dependent,
 N=Not used

Counter	No	Tag	St	MaxOcc	Level	Name
0170		CLD	R	200	2	CLD-REF
This segment group shall be repeated, if any of these conditions apply: 1) The same article is packed with different quantities per package/handling unit. 2) An article number is packed into more than one homogenous (M) or mixed (G) handling unit. Please refer to EDI guidelines for examples.						
0180	29	REF	D	200	3	Reference Identification

Standard			Implementation	
Ref.	Id	Name	St Format	Usage / Remark
REF 01	128	Reference Identification Qualifier	M ID 2/3	Code qualifying the Reference Identification LS Bar-Coded Serial Number
REF 02	127	Reference Identification	C AN 1/30	Reference information as defined for a particular Transaction Set or as specified by the Reference Identification Qualifier Barcode serial number including the alphanumeric identifier (FACT identifier) as the first character. Valid identifiers are S (Simplified handling unit / Inner package), M (Homogeneous handling unit) or G (Mixed handling unit).

Remark:

Label number or ID of an individual package or handling unit. The serial numbers must not be repeated within one year. This segment can be omitted for shipments going directly to a Dealership.

Example:

REF*LS*S10022088'

No = Consecutive segment number
 MaxOcc = Maximum occurrence of the segment/group
 Counter = Counter of segment/group within the standard

St=Status
 X12: M=Mandatory, C=Conditional, O=Optional
 User specific: R=Required, O=Optional, D=Dependent, N=Not used

Counter	No	Tag	St	MaxOcc	Level	Name
0010	30	CTT	M	1	0	Transaction Totals

Standard			Implementation	
Ref.	Id	Name	St Format	Usage / Remark
CTT 01	354	Number of Line Items	M N0 1/6	Total number of HL segments

Remark:

Example:

CTT*2'

No = Consecutive segment number
 MaxOcc = Maximum occurrence of the segment/group
 Counter = Counter of segment/group within the standard

St=Status
 X12: M=Mandatory, C=Conditional, O=Optional
 User specific: R=Required, O=Optional, D=Dependent,
 N=Not used

Counter	No	Tag	St	MaxOcc	Level	Name
0020	31	SE	M	1	0	Transaction Set Trailer

Standard			Implementation	
Ref.	Id	Name	St Format	Usage / Remark
SE 01	96	Number of Included Segments	M N0 1/10	Total number of segments included in a transaction set including ST and SE segments
SE 02	329	Transaction Set Control Number	M AN 4/9	Identifying control number that must be unique within the transaction set functional group assigned by the originator for a transaction set

Remark:

Example:

SE*28*721422084'

No = Consecutive segment number
 MaxOcc = Maximum occurrence of the segment/group
 Counter = Counter of segment/group within the standard

St=Status
 X12: M=Mandatory, C=Conditional, O=Optional
 User specific: R=Required, O=Optional, D=Dependent,
 N=Not used