

Detailed Guidelines of Despatch Advice AVIEXP/DESADV within Volvo

1 General

This document describes Volvo's application of Odette subset of EDIFACT message for despatch advice (AVIEXP/DESADV).

The specification offers a detailed description of those data elements which will be used.

The basis of this application is the Odette subset of EDIFACT message entitled AVIEXP/DESADV V5R1 based on D96A issued by the secretariat in October 1996.

The purpose and basic function of the message

The purpose of the despatch advice is to provide the final consignee of the goods with detailed information relating to the actual contents of a despatch sent by a consignor. The message is based upon the definition of a despatch as a specified amount of goods sent by a specified consignor to a specified consignee on a specific occasion.

Notification is to be given of deliveries to all Volvo units.

The message gives the following information:

- To state the actual time for despatch.
- To provide specific information concerning transportation.
- To specify the actual packages in the despatch.
- To specify the contents of the despatch.
- To provide the necessary documentation for customs clearance.

Despatch Advice vis-à-vis Document

When it comes to deliveries within the EU, Volvo requires following documents to accompany the goods:

- Despatch advice
- Way bill

For border-crossing despatches, i.e. import and/or export, the following documents must accompany the goods:

- Invoice/Despatch advice
- Way bill
- Goods certificate or invoice declaration, where appropriate

The contents and structure of the AVIEXP/DESADV message corresponds to the Despatch Advice document for domestic despatches, and to the invoice/despatch advice for border crossing despatches.

Despatch advice will progressively replace the paper documents as the operative source of information, but during a transition period, despatch advice and the corresponding documents will be used in parallel.

Volvo's requirements relating to delivery documents are specified in Appendix 5.

Creation of a Despatch Advice

A despatch advice shall state the actual contents of a despatch.

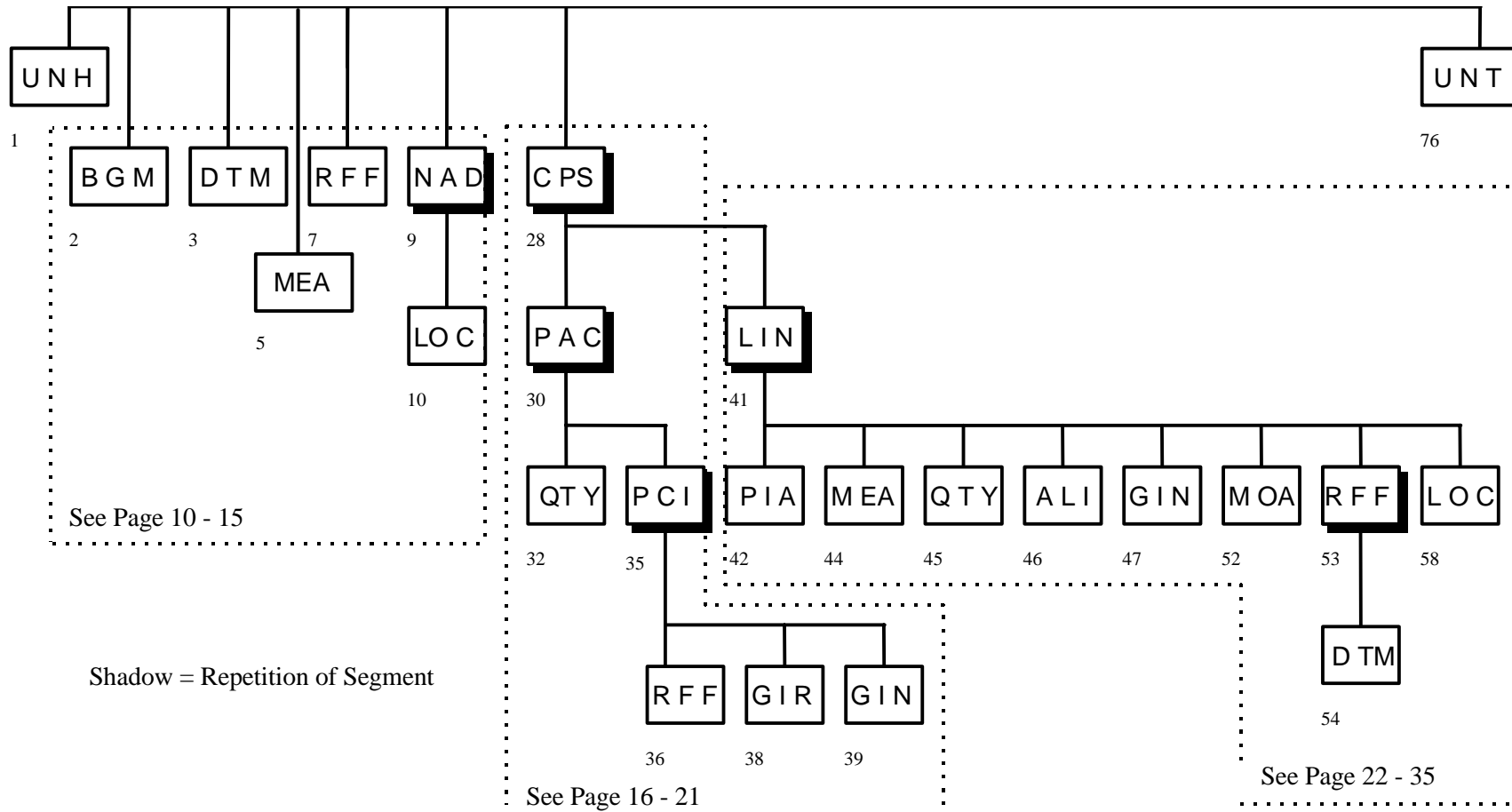
Notification must therefore not be made until the actual loading procedure is completed and no later than one hour after the goods have been despatched.

All articles from one consignor to one place of discharge on one and the same delivery occasion shall be specified on one and the same despatch advice (AVIEXP/DESADV).

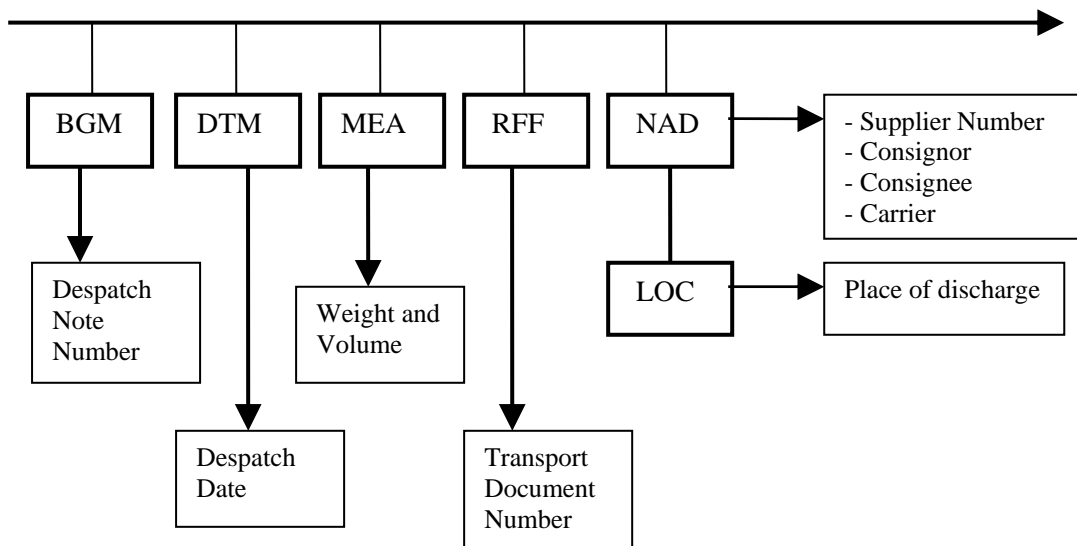
In the event that the quantity of goods defined in a particular despatch is too large to be accommodated in its entirety on one vehicle/trailer/container etc., it is necessary to redefine the despatch so it relates only to the vehicle/trailer/container etc. on which it is being transported.

2 File Structure

See next page.



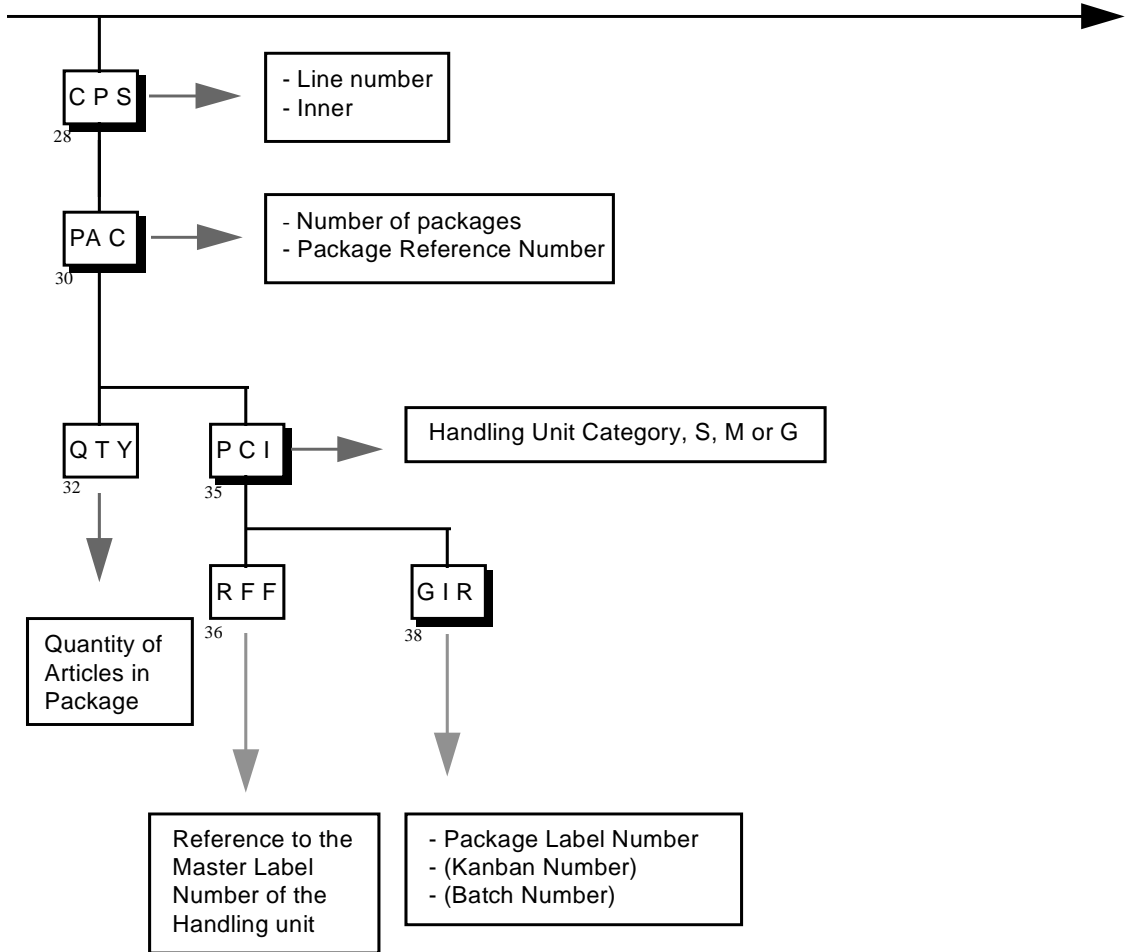
Header- and Party-Segment Description



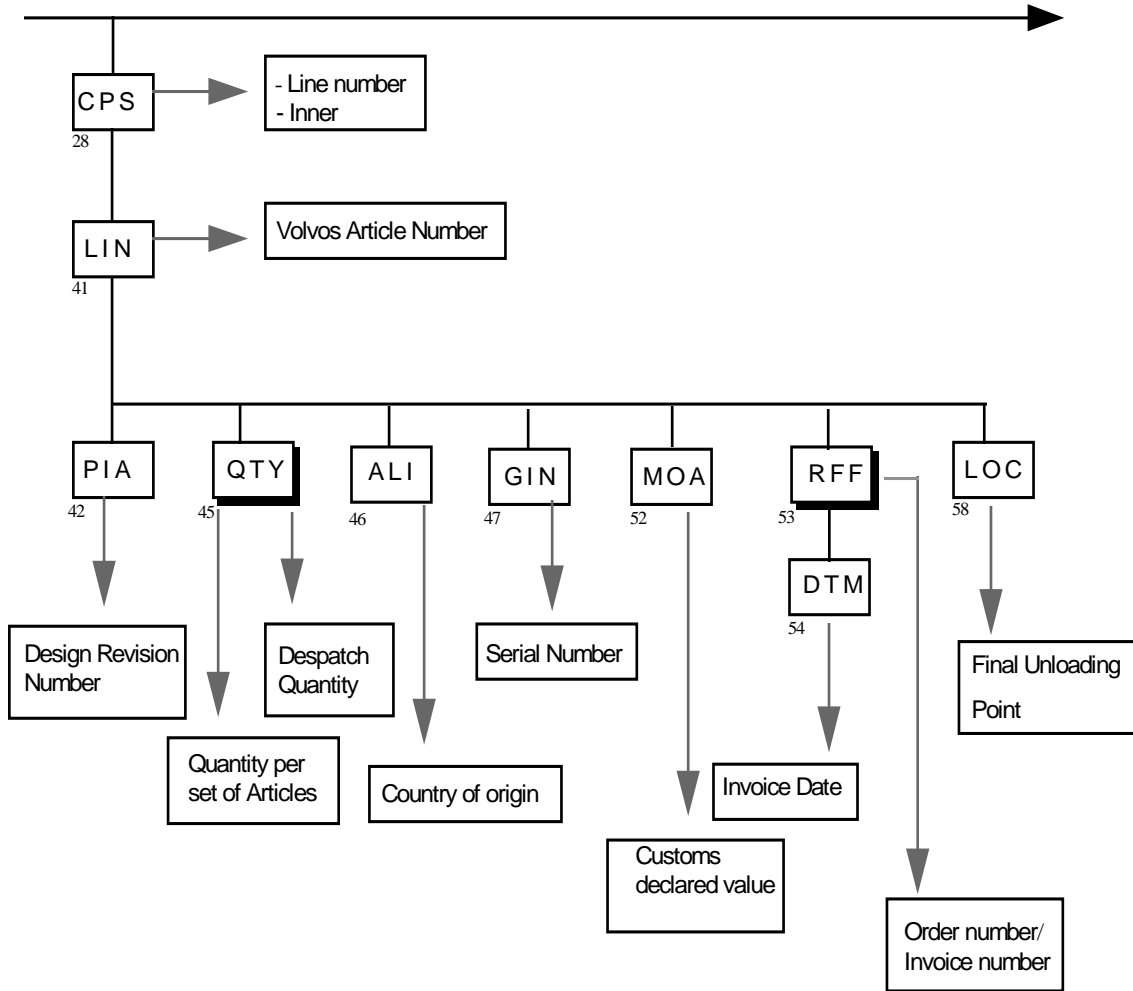
One message can only consist of one Despatch Note Number (AVIEXP-number).

ALL articles to one Place of Discharge should be on ONE Despatch Note (AVIEXP).

Segment Description of Package



Segment Description of the Article Level



3 Detailed Information about Packaging

This part of the despatch advice is rather complicated, therefore we will try to make some clarifications in this chapter and also in the examples in the next chapter.

Package Unit (One key expression concerning the packaging)

- **Package Unit**

An unit in which the article itself is loaded.

- Simplified Handling Unit

Consists of one package which is a handling unit at the same time.

- Non Simplified Handling Unit

Consists of one or more packages which are not handling units at the same time.

Non-Simplified Handling Unit can be of two kinds:

- Homogenous Handling Unit

Consists of one unique article number.

- Mixed Handling Unit

Consists of more than one article number.

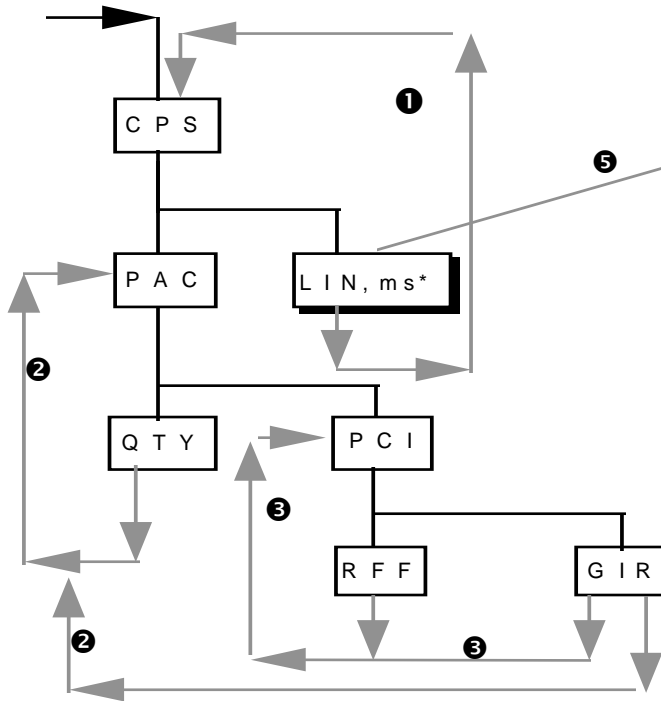
Multi-Article packages

In the old ODETTE messages, not being a subset of EDIFACT messages, it was defined as a principal that one package should only contain one article. Now it will be possible to have several articles in one package (e.g. set of articles, kits and sequence parts).

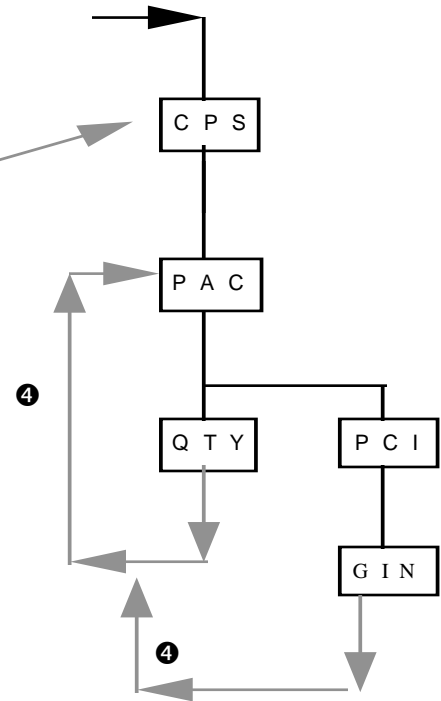
This has been defined as Multi-article packages.

Different Packing Situations

Package Level



Handling Unit Level



* **ms** = more segments

Roles for Package Level:

❶ CPS loop if:

- Several article numbers to the same place of discharge.

❷ PAC loop if:

- The same article number is packed in different types of packages.
 - The same article number is packed in the same type of package with different quantities.

❸ PCI loop if:

- One article's packages refers to different handling units

4 Detailed Segment Description

1-UNH	MESSAGE HEADER	M 1
	To uniquely identify the Odette subset and the Edifact message.	
0062	MESSAGE REFERENCE NUMBER.	M an..14
	Sender's reference number	
S009	MESSAGE IDENTIFIER	M
0065	Message type <i>Value:</i> DESADV	M an..6
0052	Message version number <i>Value:</i> D	M an..3
0054	Message release number <i>Value:</i> 96A	M an..3
0051	Controlling agency <i>Value:</i> UN	M an..2
0057	Associated assigned code <i>Value:</i> A01051	R an..6
0068	COMMON ACCESS REFERENCE	N
S010	STATUS OF TRANSFER	N
	Example: UNH+1+DESADV:D:96A:UN:A01051'	

2-BGM	BEGINNING OF MESSAGE	M 1
	The unique identification of the message.	
C002	DOCUMENT NAME	R
1001	Document name, coded <i>Value:</i> 351 = despatch advice	R an..3
1131	Code list qualifier	N
3055	Code list responsible agency, coded	N
1000	Document name	N
1004	DOCUMENT NUMBER	R an..17(an..35)
	Unique number for the Despatch Advice (AVIEXP/DESADV). The number must correspond to the Despatch Note number. The number must not be repeated within one year.	
	<i>Remark:</i> Some recipients may have restrictions on the data format.	
	<i>Please note</i> This data element is also used in the ODETTE label. Restrictions might occur in the length.	
1225	MESSAGE FUNCTION, CODED	N
4343	RESPONSE TYPE, CODED	N
	Example: BGM+351+756123'	

3-DTM	DATE/TIME	R 1 (10)
	Date and time on which the message was created.	
C507	DATE/TIME	M
2005	Date/Time qualifier <i>Value:</i> 137 = document date/time	M an..3
2380	Date/Time Date and time on which the message was created. Has to correspond to the real date and time of despatch.	R n12 (an..35)
2379	Date/Time format qualifier <i>Value:</i> 203 = CCYYMMDDHHMM	R an..3
	Example: DTM+137:199703271130:203'	

5-MEA Measurements**D 5**

A segment specifying the weight and volume of the consignment.

Condition: Required information for intercontinental shipments.

6311 MEASUREMENT APPLICATION QUALIFIER M an..3

Specification of the application of the physical measurement used.

AAX Consignment measurement

C502 MEASUREMENT DETAILS R

Identification of measurement type.

6313 Measure dimension, coded R an..3

Specification of the type of dimension to be measured

AAD Total gross weight

ABJ Volume

C174 VALUE / RANGE

Measurement value and relevant minimum and maximum tolerances in that order.

6411 Measure unit qualifier M an..3

Indication of the unit of measurement in which weight or volume is expressed.

KGM Kilogram

MTR Metres

6314 Measurement value R n..11

Value of the measured unit.

Example: MEA+AAX+AAD+KGM:136'

7-RFF REFERENCE		R 2 (10)
	Transport document number.	
C506 REFERENCE		M
1153	Reference qualifier <i>Value:</i> AAS = transport document number	M an..3
1154	Reference number	R an..17 (an..35)
	The identification number on the transport document, valid between Consignor/Supplier, Carrier and Volvo.	
	<i>Note:</i> When agreement is made to use the Volvo Transport Document (VTD) as transport document, this document will replace any other international or domestic transport document.	
	<i>For more information, see the Transport Instructions.</i>	
	<i>Note:</i> The reference number must be clearly shown on the Transport document and be identical to the number given in the data element 1154 in this RFF segment.	
1156	Line number	N
4000	Reference version number	N

Example: RFF+AAS:VTD12349704171'

7-RFF REFERENCE D

To identify specific transport arrangements, ex. milk-runs.

Condition:

This segment will only be used after special agreement.

C506 REFERENCE M

1153 Reference qualifier M an..3
value: CRN = conveyance reference number.

1154 Reference number R an..17 (an..35)

1156 Line number N

4000 Reference version number N

Example: RFF+CRN:1997030112345'

9-NAD	NAME AND ADDRESS	R 4 (10)
	Volvo's identity of the consignor.	
3035	PARTY QUALIFIER	M an..3
	<i>Value:</i> CZ = consignor	
C082	PARTY IDENTIFICATION DETAILS	R
3039	Party Id. identification The number allocated to the consignor, sending the goods. The number must be given without leading spaces or zeroes.	M an..10 (an..35)
1131	Code list qualifier	N
3055	Code list responsible agency, coded <i>Value:</i> 92 = defined by the Buyer	R an..3
C058	NAME AND ADDRESS	N
C080	PARTY NAME	N
C059	STREET	N
3164	CITY NAME	N
3229	COUNTRY SUB-ENTITY IDENTIFICATION	N
3251	POSTCODE IDENTIFICATION	N
3207	COUNTRY, CODED	N

Example: NAD+CZ+1234::92'

9-NAD	NAME AND ADDRESS	D
	Volvo's identification of the seller.	
	<i>Condition:</i> The segment is mandatory when the Consignor and the Seller have been allocated different numbers by Volvo.	
3035	PARTY QUALIFIER	M an...3
	<i>Value:</i> SE = seller	
C082	PARTY IDENTIFICATION DETAILS	R
3039	Party Id. identification The supplier number, allocated to the seller. The number must be given without leading spaces or zeroes.	M an..10 (an..35)
1131	Code list qualifier	N
3055	Code list responsible agency, coded <i>Value:</i> 92 = defined by the Buyer	R an..3
C058	NAME AND ADDRESS	N
C080	PARTY NAME	N
C059	STREET	N
3164	CITY NAME	N
3229	COUNTRY SUB-ENTITY IDENTIFICATION	N
3251	POSTCODE IDENTIFICATION	N
3207	COUNTRY, CODED	N

Example: NAD+SE+4567::92'

9-NAD	NAME AND ADDRESS	R
	Volvo's identity of the consignee.	
3035	PARTY QUALIFIER	M an..3
	<i>Value:</i> CN = Consignee	
C082	PARTY IDENTIFICATION DETAILS	R
3039	Party Id. identification Volvo's plant or warehouse number. See appendix 1.	M an..10 (an..35)
1131	Code list qualifier	N
3055	Code list responsible agency, coded <i>Value:</i> 92 = defined by the Buyer	R an..3
C058	NAME AND ADDRESS	N
C080	PARTY NAME	N
C059	STREET	N
3164	CITY NAME	N
3229	COUNTRY SUB-ENTITY IDENTIFICATION	N
3251	POSTCODE IDENTIFICATION	N
3207	COUNTRY, CODED	N

Example: NAD+CN+1001::92'

10-NAD.LOC PLACE/LOCATION IDENTIFICATION	R 1 (10)
Volvo's identity on place of discharge.	
3227 PLACE/LOCATION QUALIFIER	M an..3
<i>Value:</i> 11 = place of discharge	
C517 PLACE/LOCATION IDENTIFICATION	R
3225 Place/Location identification, coded Volvo's identity on place of discharge. State the identity indicated in the DELINS/ SYNCRO message.	R an..8 (an..25)
1131 Code list qualifier	N
3055 Code list responsible agency, coded <i>Value:</i> 92 = defined by the Buyer	R an..3
3224 Location	N
C519 RELATED LOCATION ONE IDENTIFICATION	N
C553 RELATED LOCATION TWO IDENTIFICATION	N
5479 RELATION, CODED	N

Example: LOC+11+020::92'

9-NAD NAME AND ADDRESS	R
Transport information.	
3035 PARTY QUALIFIER	M an..3
<i>Value:</i> CA = carrier	
C082 PARTY IDENTIFICATION DETAILS	R
3039 Party Id. identification Volvo's identity on the carrier. See appendix number 3.	M an..17 (an..35)
1131 Code list qualifier	N
3055 Code list responsible agency, coded <i>Value:</i> 92 = defined by the Buyer	R an..3
C058 NAME AND ADDRESS	N
C080 PARTY NAME	N
C059 STREET	N
3164 CITY NAME	N
3229 COUNTRY SUB-ENTITY IDENTIFICATION	N
3251 POSTCODE IDENTIFICATION	N
3207 COUNTRY, CODED	N

Example: NAD+CA+ASG::92'

28-CPS CONSIGNMENT PACKING SEQUENCE **R 9999**

This segment is used to create an article driven structure with the connection between the article or articles in one or several inner packages.

The segment-group shall be repeated when several article numbers are delivered to the same place of discharge.

7164 HIERARCHICAL IDENTIFICATION NUMBER **M n..6 (an..12)**

Line number

This line number may not be repeated within the same Despatch Advice.

7166 HIERARCHICAL PARENT IDENTIFICATION **N****7075 PACKAGING LEVEL, CODED** **R an..3**

Value: 1 = Inner Package

Example: CPS+1++1'

30-CPS.PAC PACKAGE

R 9999

To give Packaging Description.
Describes the inner package if it occurs. It will then be connected to the handling unit via RFF.

Note:

If no inner package is used, the package as a simplified handling unit, without RFF, is described here.

This segment-group shall be repeated when an article number is packed in different package types or if the same article number is packed in the same package but with different quantities.

7224 NUMBER OF PACKAGES R n..6 (n..8)

Number of packages.

C531 PACKAGING DETAILS N

C202 PACKAGE TYPE R

7065 Type of package identification R an..17
Volvo's reference number for the type of packaging used in the delivery.

1131 Code list qualifier N an..3

3055 Code list responsible agency, coded R an..3
Value: 92 = defined by Volvo

7064 Type of package D an..35
Condition:
Used for external packaging.

C402 PACKAGE TYPE IDENTIFICATION N

C532 RETURNABLE PACKAGE DETAILS N

Example: PAC+3++207461::92'

32-CPS.PAC.QTY	QUANTITY	R 1 (10)
	Quantity of articles in the package.	
C186	QUANTITY DETAILS	M
6063	Quantity qualifier <i>Value:</i> 52 = quantity per pack	M an..3
6060	Quantity Quantity of articles in package.	M n..10 (n..15)
6411	Measure unit qualifier Sort code according to ISO standard. See appendix number 4 or ODDC025.	D an..3
	<i>Condition:</i> Default value is PCE (piece).	
	<i>Example:</i> QTY+52:150'	

35-CPS.PAC.PCI PACKAGE IDENTIFICATION**R 1000**

Describes the type of handling unit the packages are connected to.

The segment-group shall be repeated when one article's packages refer to different handling units.

4233 MARKING INSTRUCTIONS, CODED**N an..3****C210 MARKS AND LABELS****N****8275 CONTAINER/PACKAGE STATUS, CODED****N****C827 TYPE OF MARKING****R**

7511 Type of marking, coded

M an..3

Handling Unit Qualifier:
S = Simplified Handling Unit
M = Homogeneous Handling Unit
G = Mixed Handling Unit

1131 Code list qualifier

N3055 Code list responsible agency, coded
Value: 92 = defined by Volvo**R an..3**

Example: PCI++++S::92'

36-CPS.PAC.PCI.RFF REFERENCE**D 1***Condition:*

This segment will only be used when homogeneous and mixed handling units are used.

C506 REFERENCE**M**

1153	Reference qualifier <i>Value:</i> AAT = master label number	M an..3
1154	Reference number Reference to the master label number of the handling unit which contains the packages identified in the GIN-segment(s) below the same PCI-segment occurrence.	R n..9 (an..35)
1156	Line number	N
4000	Reference version number	N

Example:RFF+AAT:125'

38-CPS.PAC.PCI.GIR RELATED IDENTIFICATION NUMBERS R 99

Identities connected to single package.

7297 SET IDENTIFICATION QUALIFIER M an..3

Value: 3 = Package

C206 IDENTIFICATION NUMBER M

Package label number for all S-marked units, simplified handling unit and small box. The segment will be repeated for each Package Label Number.

7402 Identity number M n9 (an..35)
Package number

7405 Identity number qualifier R an..3
Value: ML = Marking / Label number

4405 Status, coded N

C206 IDENTIFICATION NUMBER D

Condition:

This data element is required for Vital Safety Parts and when special trace ability is required - Document Obligation. Volvo will provide code values individually to suppliers concerned.

7402 Identity number M an..9 (an..35)
Production Batch Number

7405 Identity number qualifier R an..3
Value: BX = batch number

4405 Status, coded N

C206 IDENTIFICATION NUMBER N

C206 IDENTIFICATION NUMBER N

C206 IDENTIFICATION NUMBER N

Example: GIR+3+234:ML'

41-CPS.LIN LINE ITEM**R 9999**

In case of single-article packages , the Configuration Level (data element 1222) is set to zero. In this case, there is only one LIN segment per Article Line (for the unique Despatched Article).

Data element 1222 is not a coded data element. Nevertheless a code-list (ODDC112) has been attached to give the only valid level values.

1082 **LINE ITEM NUMBER** **N**

1229 **ACTION REQUEST/NOTIFICATION, CODED** **N**

C212 **ITEM NUMBER IDENTIFICATION** **D**

Condition:

Used when article number is required.

7140 Item number R an..35
Volvo's article number. Should be given without leading blanks or zeroes.

7143 Item number type, coded R an..3
Value: IN = Buyer's article number

1131 Code list qualifier N

3055 Code list responsible agency, coded N

C829 **SUB-LINE INFORMATION** **N**

1222 **CONFIGURATION LEVEL** **R n..2**

Value:

0 = No level (single-article package case)

7083 **CONFIGURATION, CODED** **N**

Example: LIN+++1234567:IN++0'

42-CPS.LIN.PIA ADDITIONAL PRODUCT IDENTIFICATION 1 (10)

Additional information about the article.

Condition:

This segment will only be used after special agreement.

4347 PRODUCT IDENTIFICATION, FUNCTION QUALIFIER M an..3

1 = additional identification

C212	ITEM NUMBER IDENTIFICATION	M
7140	Item number Design revision number. The technical status of the article.	R an..14 (an..35)
7143	Item number type, coded <i>Value:</i> DR = drawing revision number	R an..3
1131	Code list qualifier	N
3055	Code list responsible agency, coded	N

Example: PIA+1+PO4:DR'

45-CPS.LIN.QTY	QUANTITY	R 2 (10)
	Gives the quantity despatched.	
C186	QUANTITY DETAILS	M
6063	Quantity qualifier <i>Value:</i> 12 = despatch quantity	M an..3
6060	Quantity Quantity delivered.	M n..10 (n..15)
	<i>Note:</i> To get the total quantity delivered of one article when set of articles is used, see example 3 at the end of this chapter.	
6411	Measure unit qualifier Sort code according to ISO standard. See appendix number 4 or ODDC025.	D an..3
	<i>Conditions:</i> Default value is PCE (piece).	
	Example: QTY+12:300'	

45-CPS.LIN.QTY QUANTITY**D**

Gives the quantity in the set of articles.

C186 QUANTITY DETAILS**M**

6063 Quantity qualifier

M an..3

Value: 1 = discrete quantity

6060 Quantity

M n..10 (n..15)

Number of articles in 'set of articles'.

6411 Measure unit qualifier

D an..3

Sort code according to ISO standard.

See appendix number 4 or ODDC025.

Conditions:

Default value is PCE (piece).

Example: QTY+1: 2'

46-CPS.LIN.ALI ADDITIONAL INFORMATION R 1 (10)

Added information.

3239 COUNTRY OF ORIGIN, CODED R a2

Country of Origin. Code for country of origin see appendix number 4 or ODDC006.

9213 TYPE OF DUTY REGIME, CODED D an..3

Value: 0= No preference origin
1= Origin subject to EU/EFTA preference.

Condition:

Required information for trade between countries that have a free trade agreement with the EU. In this case, confirmation is to be given if the delivered article complies with the terms for origin goods, specified in the current free trade agreement.

Note:

Only origin goods can be exempted from customs duty when imported to EU countries. The fact that an article is produced/assembled in a country covered by a free trade agreement does not automatically entitle the article to be exempted from customs duty. The article must comply with the current rules of origin to be exempt from customs duty. Quote one of the above mentioned alternative values to confirm that the article complies with the rules of origin specified in current free trade agreements.

4183 SPECIAL CONDITIONS, CODED N

4183 SPECIAL CONDITIONS, CODED N

4183 SPECIAL CONDITIONS, CODED N

4183 SPECIAL CONDITIONS, CODED N

4183 SPECIAL CONDITIONS, CODED N

Example: ALI+SE'

47-CPS.LIN.GIN GOODS IDENTITY NUMBER D 100

The segment is used to give information about the serial number, manufacturing number, etc. for those components which are identified as individual units.

Condition:

This segment will only be used after special agreement. If more than one identity will be given, use primarily the first five appearances of C208, before you repeat the segment.

7405 IDENTITY NUMBER QUALIFIER M an..3

Value: BN = Serial number
 EE = Engine number
 VV = VIN number

C208 IDENTITY NUMBER RANGE M

7402 Identity number Individual number. M an..35

7402 Identity number N

C208 IDENTITY NUMBER RANGE N

C208 IDENTITY NUMBER RANGE N

C208 IDENTITY NUMBER RANGE N

C208 IDENTITY NUMBER RANGE N

Example: GIN+VV+237005'

52-CPS.LIN. MOA MONETARY AMOUNT

D 1 (5)

Customs declared value.

Condition:

Required information for deliveries containing goods that are not in free circulation within the EU (not customs cleared within EU).

C516 MONETARY AMOUNT

M

5025 Monetary amount type qualifier

M an..3

Value: 40 = customs value

5004 Monetary amount

R n..15 (n..18)

Customs declared value. The total invoiced amount for the article (Quantity x price). The value can be stated with a maximum of three decimals. An amount having a decimal separator, must have at least one digit before and after the separator. Ending zeroes should be omitted.

Example: 5555:00 is stated 5555 or 5555.0 or 5555,0
 5555:50 is stated 5555.5 or 5555,5
 5555:55 is stated 5555.55 or 5555,55

6345 Currency, coded

R an..3

Code for currency. Code for the currency used in the invoice. Code value according to ISO standard. See appendix number 4 or ODDC007.

6343 Currency qualifier

N

4405 Status, coded

N

Example: MOA+40:530:SEK'

53-CPS.LIN.RFF REFERENCE**R 4 (10)**

To give reference to the purchase order.

C506 REFERENCE**M**

1153 Reference qualifier

M an..3*Value:* ON = purchase order number

1154 Reference number

R an..17(an..35)

Order number for the specific article, without hyphens. To be obtained from DELINS/DELFOR message.

1156 Line number

N

4000 Reference version number

N

Example: RFF+ON:323901234020'

53-CPS.LIN.RFF REFERENCE**D**

This data segment is used to give specific reference to an order line.

Condition:

This segment will only be used after special agreement.

C506 REFERENCE**M**

1153	Reference qualifier <i>Value:</i> AAP = Part consignment number	M an..3
1154	Reference number Part consignment number.	R an..17 (an..35)
1156	Line number	N
4000	Reference version number	N

Example: RFF+AAP:978'

53-CPS.LIN.RFF REFERENCE**D**

Invoice reference.

Condition:

Required information for deliveries containing goods that are not in free circulation within the EU (not customs cleared within EU).

C506 REFERENCE**M**

1153	Reference qualifier <i>Value:</i> IV = Invoice	M an..3
1154	Reference number Invoice number.	R n..17 (an..35)
1156	Line number	N
4000	Reference version number	N

Example: RFF+IV:1234567'

54-CPS.LIN.RFF.DTM DATE/TIME**D 1**

Invoice date.

Condition:

This segment is required when the invoice reference is given (see preceding RFF).

C507 DATE/TIME**M**

2005 Date/Time qualifier

M an..3*Value:* 171 = reference date/time

2380 Date/Time

R n8 (an..35)

Date for the invoice in the RFF above.

2379 Date/Time format qualifier

R an..3*Value:* 102 = CCYYMMDD

Example: DTM+171:19970424:102'

53-CPS.LIN.RFF REFERENCE**D**

EUR certificate number.

Note:

A declaration of origin can be made either through an EUR-1 certificate or an invoice declaration.

Condition:

Required information for trade between countries that have free trade agreements with the EC and EU.

The consignor's data relating to the type of shipping document, its identity number and date.

C506 REFERENCE**M**

1153	Reference qualifier <i>Value:</i> AEE = EUR Certificate	M an..3
1154	Reference number Document number.	R an..17(an..35)
1165	Line number	N
4000	Reference version number	N

Example: RFF+AEE:7654321'

54-CPS.LIN.RFF.DTM DATE/TIME**D**

Issuing date for the EUR certificate.

Condition:

This segment is required when the EUR certificate is given (see preceding RFF).

C507 DATE/TIME**M**

2005 Date/Time qualifier

M an..3*Value:* 171 = reference date/time

2380 Date/Time

R n8 (an..35)

Issuing date for the EUR certificate in the above RFF-segment.

2379 Date/Time format qualifier

R an..3*Value:* 102 = CCYYMMDD

Example: DTM+171:19970424:102'

58-CPS.LIN.LOC PLACE/LOCATION IDENTIFICATION D 1 (100)

Volvo's identity of the final unloading point.

Condition:

This segment will only be used after special agreement.

3227	PLACE/LOCATION QUALIFIER	M an..3
	<i>Value:</i> 159 = additional internal destination.	
C517	PLACE/LOCATION IDENTIFICATION	R
3225	Place/Location identification, coded Final unloading point. State the code indicated in the message DELINS/SYNCRO.	R an..17 (an..25)
1131	Code list qualifier	N
3055	Code list responsible agency, coded <i>Value:</i> 92 = defined by the Buyer	R an..3
3224	Location	N
C519	RELATED LOCATION ONE IDENTIFICATION	N
C553	RELATED LOCATION TWO IDENTIFICATION	N
5479	RELATION, CODED	N

Example: LOC+159+F-11 020::92'

5 Examples

1. Simplified Handling Unit.
2. Homogenous Handling Unit and Mixed Handling Unit.

Example 1

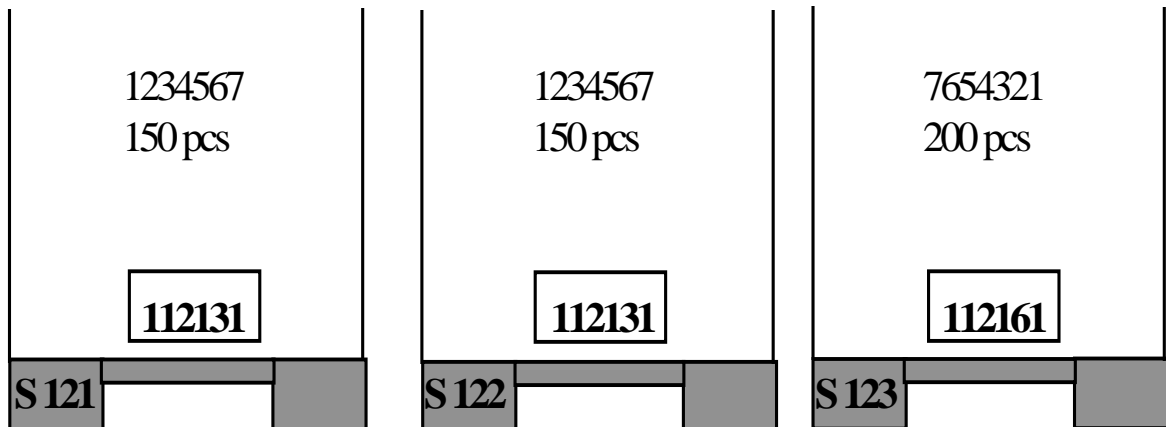
Simplified Handling Unit

Volvo's supplier number: 1234
Despatch note number: 765123
Day of despatch: 19970327
Carrier: ASG
Consignee: 1001
Place of discharge: 020

The despatch contains of 2 articles:

1234567 with a total quantity of 300 pcs in 2 handling units of type 112131 with 150 PCs in each and package label numbers S121 and S122.

7654321 with a total quantity of 200 PCs in 1 handling unit of type 112161 with 200 PCs and package label number S123.



Example 1 in Version 5

*** Initial service segment according to ISO/EDIFACT ***

BGM+351+756123'	Despatch Note Number
DTM+137:199703271130:203'	Despatch Date and Time
RFF+AAS:VTD12349703271'	Transport Document Number
NAD+CZ+1234::92'	Consignor
NAD+CN+1001::92'	Consignee
LOC+11+020::92'	Place of Discharge
NAD+CA+ASG::92'	Carrier coded
CPS+1++1'	Line number for inner package
PAC+2++112131::92'	Number of Packages, Package ref. Number
QTY+52:150'	Quantity of Articles in Package
PCI++++S::92'	Handling Unit Category
GIR+3+121:ML'	Package Label Number
GIR+3+122:ML'	Package Label Number
LIN+++1234567:IN++0'	Volvo's Article number
QTY+12:300'	Despatch Quantity
ALI+SE'	Country of Origin
RFF+ON:323901234020'	Volvo's Order number
CPS+2++1'	Line number for inner package
PAC+1++112161::92'	Number of Packages, Package ref. Number
QTY+52:200'	Quantity of Articles in Package
PCI++++S::92'	Handling Unit Category
GIR+3+123:ML'	Package Label Number
LIN+++7654321:IN++0'	Volvo's Article number
QTY+12:200'	Despatch Quantity
ALI+SE'	Country of Origin
RFF+ON:323901234020'	Volvo's Order number

*** Ending service segment according to ISO/EDIFACT ***

Example 1 in Version 3

*** Initial service segment according to ISO/EDIFACT ***

MID+756123+970327:1130'	Despatch Note Number
	Despatch Date and Time
CDT+:::1234'	Consignor
CSG+:::1001+020'	Consignor
DTR+++:::ASG+19971234019'	Carrier coded
	Transport Document Number
ARD+1234567+300+323901234020+SE'	Volvo's Article number
	Despatch Quantity
	Volvo's Order number
	Country of Origin
TCO+:112131+2+150'	Package ref. Number
	Number of Packages
	Quantity of Articles in Package
NCO++S121:S122'	Package Label Numbers
ARD+7654321+200+323901234020+SE'	Volvo's Article number
	Despatch Quantity
	Volvo's Order number
	Country of Origin
TCO+:112161+1+200'	Package ref. Number
	Number of Packages
	Quantity of Articles in Package
NCO++S123'	Package Label Number

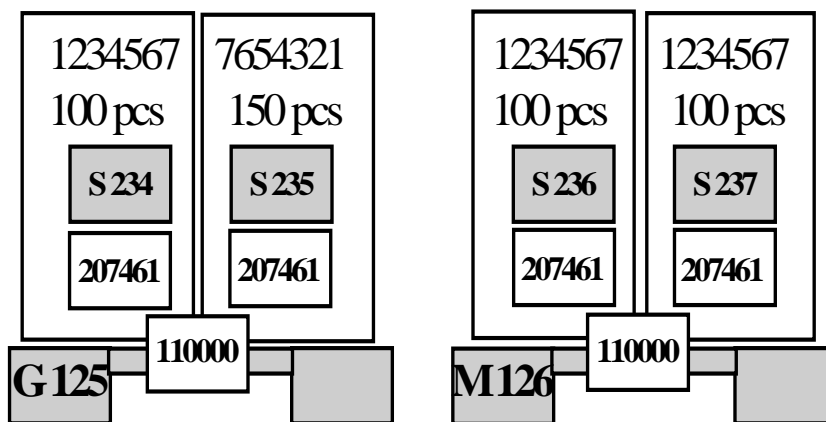
*** Ending service segment according to ISO/EDIFACT ***

Example 2**Homogenous Handling Unit and Mixed Handling Unit.**

The despatch contains of 2 articles:

1234567 with a total quantity of 300 PCs in 3 packages of type 100780 with 100 PCs in each and package label number S234, packed on the handling unit G125 with package reference number 110000 and S236 and S237 packed on M126 with package reference number 110000.

7654321 with a total quantity of 150 PCs in 1 package of type 100780 with 150 PCs and package label number S235, packed on the handling unit G125 with package reference number 110000.



Example 2 in Version 5

*** Initial service segment according to ISO/EDIFACT ***

BGM+351+756123'	Despatch Note Number
DTM+137:199703271130:203'	Despatch Date and Time
RFF+AAS:VTD12349703271'	Transport Document Number
NAD+CZ+1234::92'	Consignor
NAD+CN+1001::92'	Consignee
LOC+11+020::92'	Place of Discharge
NAD+CA+ASG::92'	Carrier coded
CPS+1++1'	Line number for inner package
PAC+3++207461::92'	Number of Packages, Package ref.Number
QTY+52:100'	Quantity of Articles in Package
PCI++++G::92'	Handling Unit Category
RFF+AAT:125'	Reference to Handling Unit. See GIN-
s	segment
GIR+3+234:ML'	Package Label Number
PCI++++M::92'	Handling Unit Category
RFF+AAT:126'	Ref. to Handling Unit. See GIN-
segment	
GIR+3+236:ML'	Package Label Number
GIR+3+237:ML'	Package Label Number
LIN+++1234567:IN++0'	Volvo's Article number
QTY+12:300'	Despatch Quantity
ALI+SE'	Country of Origin
RFF+ON:323901234020'	Volvo's Order number
CPS+2++1'	Line number
PAC+1++207461::92'	Number of Packages, Package ref.Number
QTY+52:150'	Quantity of Articles in Package
PCI++++G::92'	Handling Unit Category
RFF+AAT:125'	Ref. to Handling Unit. See GIN-
segment	
GIR+3+235:ML'	Package Label Number
LIN+++7654321:IN++0'	Volvo's Article number
QTY+12:150'	Despatch Quantity
ALI+SE'	Country of Origin
RFF+ON:323901234020'	Volvo's Order number

*** Ending service segment according to ISO/EDIFACT ***

Example 2 in Version 3

*** Initial service segment according to ISO/EDIFACT ***

MID+756123+970327:1130'	Despatch Note Number
	Despatch Date and Time
CDT+:::1234'	Consignor
CSG+:::1001+020'	Consignee
DTR+++:::ASG+19971234019'	Carrier coded
	Transport Document Number
ARD+1234567+300+323901234020+SE'	Volvo's Article number
	Despatch Quantity
	Volvo's Order number
	Country of Origin
TCO+:100780+3+100'	Package ref. Number
	Number of Packages
	Quantity of Articles in Package
NCO+G125+S234'	Transport Label Numbers
	Package Label Number
NCO+M126+S236:S237'	Transport Label Numbers
	Package Label Number
ARD+7654321+150+323901234020+SE'	Volvo's Article number
	Despatch Quantity
	Volvo's Order number
	Country of Origin
TCO+:100780+1+150'	Package ref. Number
	Number of Packages
	Quantity of Articles in Package
NCO+G125+S235'	Transport Label Numbers
	Package Label Number

*** Ending service segment according to ISO/EDIFACT ***